




# DISCOVER LIFE'S POSSIBILITIES

@  san juan island  
**LIBRARY**



**CHECK THIS OUT:** 2023 Annual Report  
and Highlights inside!



360-378-2798



[sjlib@sjlib.org](mailto:sjlib@sjlib.org)



[www.sjlib.org](http://www.sjlib.org)



1010 Guard St, Friday Harbor

# DIRECTOR'S MESSAGE



## DIRECTOR'S MESSAGE

San Juan Island Library will be on the August 6, 2024 ballot for an operations & maintenance levy adjustment to maintain current services and operations of our heavily used library.

Junior districts like ours are voted for, funded, and operated by public taxes, not donations. Districts are limited to 1% annual increases in levy funding. We all know that most costs rise by more than 1% due to inflation. Many budget items have increased by 5% to 20% per year, including utilities, building maintenance, cost of living, liability and property insurance, technology, and more.

Although the library's last levy increase allowed for 7.5% budget increases over six years, the library stretched it for seven additional years by holding increases to less than 2% over the last half-decade by balancing fixed and rising hard costs (listed above) with freezing or cutting budgets for flexible costs like new materials, programs, operating supplies, marketing, carpeting, furniture upgrades, staff development, and more. Since costs for these continued to grow, freezing and decreasing budgets gave us less ongoing buying power. The library has been very frugal with its funding, a testament to our commitment to serving this community responsibly and well.

When the 2012 levy reserves run out, the library will experience an approximate \$350,000 deficit, necessitating deeper cuts to materials and programs, and a likely 20% reduction in staffing. Open days and hours will be cut as a result. Passage of a new levy adjustment would keep library funding stable with conservative 5% annual budget increases over the next ten years, allowing the library to continue offering materials and services that our community values. This is our mission and commitment to the community of San Juan Island.

## Our Staff Thanks You!

From all of us to all of you, we thank you for an amazing year. We are so proud to serve this community!

Sincerely,

**Laurie**

**ELIZABETH**

*Brenna*

**Katlyn**

*Floyd*

*Joyce*

*Naomi*

**Heather**

**KIM**

*Sue*

**Robin**

*Jenni*

**Heidi**

*Kashis*

**Melina**

**Stephanie**

**Lauren**

*Pat*

**Gabriel**

**Frankie**

**KASEY**

**Marty**

**Anthony**

**ADVENTURE**  
— BEGINS AT —  
**YOUR LIBRARY™**

**Summer Reading**

**Program 2024**

**Fun and adventure  
available for all ages!**

# Operational Levy Lid Adjustment

## Why Is the Library Asking For Funding Now?

The Library has been frugal and strategic with the reserves from its last levy lid lift and annual funding, lasting more than double the originally planned time to ask for a new levy lid lift. This proposition is needed in order to sustain the current level of library services, programs, and collections.



### The Proposition Passes

- The Library can continue to support San Juan Island priorities, providing access to information and educational opportunities for all
- Maintain the popular and high quality collections, services, programs, and operational hours
- Expand open hours in evenings
- New digital offerings, including online publishing resources to help authors format and publish their books.



### The Proposition Fails

- Significantly reduced new materials, programs, services, technology, and staff
- Reduced open hours
- Deferred preventative building maintenance and repairs

## BE INFORMED



More information  
available at:  
[sjlib.org/levylidlift](http://sjlib.org/levylidlift)

### How Much Will It Cost?

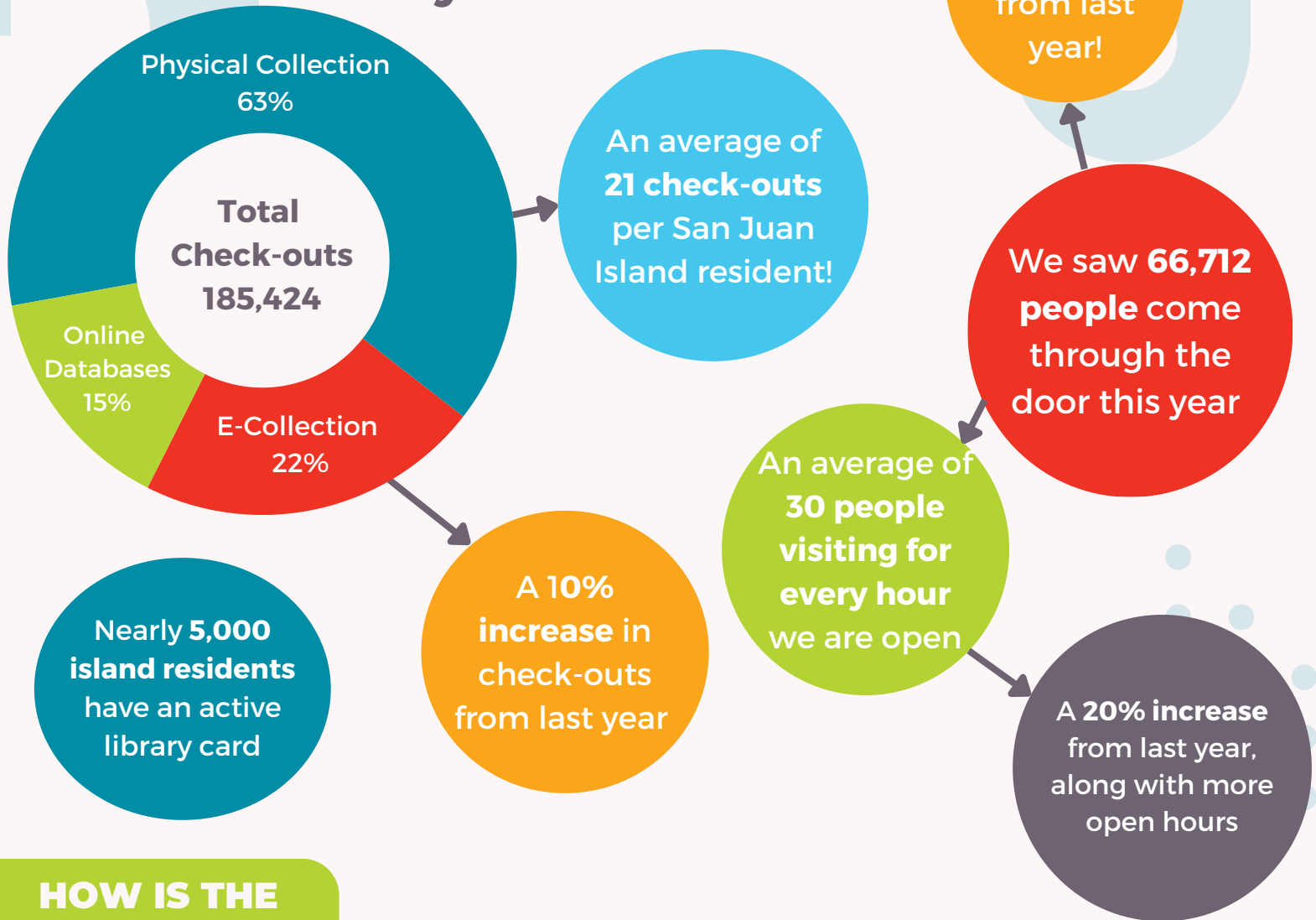
The new levy lid lift would adjust the levy rate from 23.39 cents per \$1,000 assessed value to 41 cents. A \$750,000 home would result in an approximate \$113 annual increase in taxes. The goal was to select a levy rate that would yield a budget that was adequate but not excessive to sustain Library services over the next 10 years but not take in more funding than was needed. The new rate factors in a conservative 5% annual increase to library budgets annually.

**VOTE August 6th**



# 2023 ANNUAL

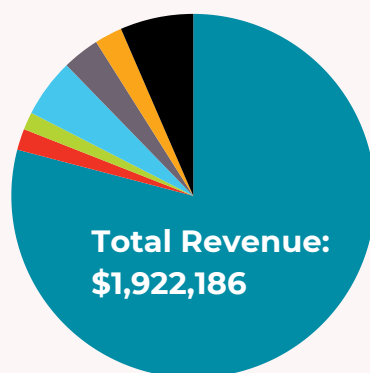
## Annual Collection Use By the Numbers



### HOW IS THE LIBRARY DOING?

We are proud to report that across the board, **2023 was a year of fantastic successes**, with high use and engagement in library services and resources. We have seen increased participation in our programs, collection use, computer use, outreach, and more in 2023.

## TOTAL OPERATING REVENUE



**\$1,520,182**

Local Tax revenue

**\$125,000**

Levy Reserves

**\$30,114**

Friend Donations

**\$47,273**

Other Donations

**\$63,446**

Grants

**\$100,000**

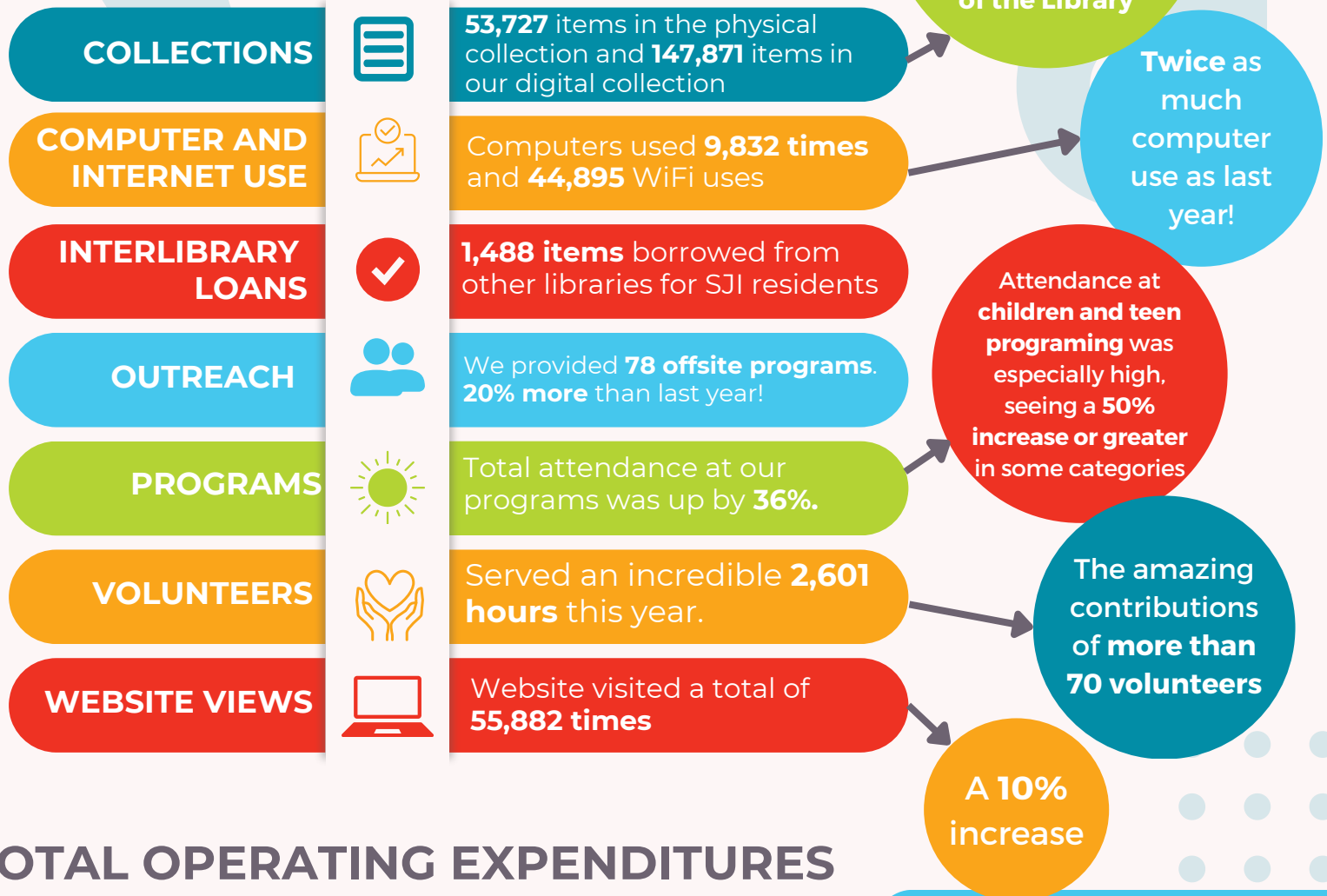
Insurance Proceeds  
(Spring St Leak in 2021)

**\$36,171**

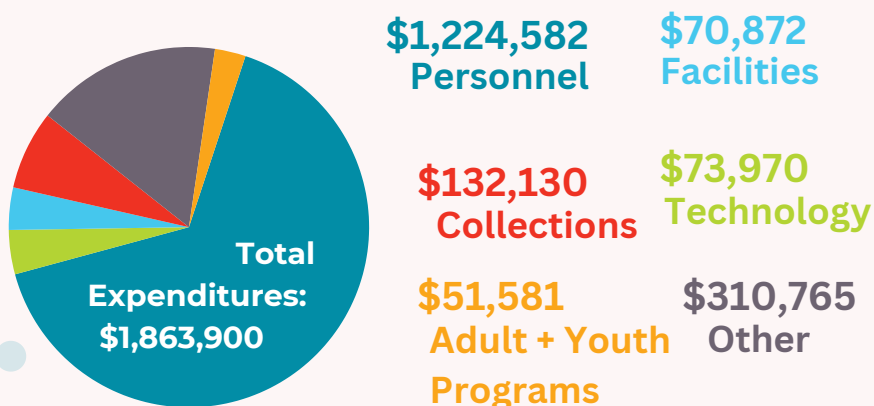
Other

# REPORT

## ACCOMPLISHMENTS



## TOTAL OPERATING EXPENDITURES



More questions about our budget? Full details are available at our Board Documents page: <https://tinyurl.com/38tvfn3f>

## MOST POPULAR AT THE LIBRARY

Most popular items:  
**Wifi Hotspots**  
(at **345 checkouts** in 2023!)

Most popular book:  
**Lessons in Chemistry**

Most popular movie:  
**Before They Vanish**

# ADULTS

## Music

Musical Performances have returned to SJI Library, with fantastic performances by **Sasha von Dassow** and others. Of special mention is the Holiday concert, which filled the library with beautiful music and a crowd that nearly spilled outside the building! Stay tuned for more music from Sasha and others!

# PROGRAMMING



## Technology

The Tech Café on Tuesdays has been continually popular, with **more than 250 people** helped with their tech questions across 2023. New technology has been added for checkout, including a Meeting OWL and more assistive technology in our Aids for Daily Living Collection.



## Creative Programs

The Library is the right place to be when you've got the creative itch! Creative programs in 2023 included **painting, jewelry making, lino cutting, clay, embroidery, and more.** Also check out the **CreativeBug steaming service** to watch thousands of high quality how-to craft videos right at home!



## Presentations

Some of the most popular presentations and topics included virtual presentations by famous authors such as **Barbara Kingsolver and David Brooks**, and workshops for **creative writing, poetry, and making comics.**



# HIGHLIGHTS

## 1000 Books

### Before Kindergarten

In 2023 we launched the **1,000 Books Before Kindergarten**. Reading aloud to your young child is one of the best ways to help build your child's early literacy skills! Stop by the Library any time during open hours to pick up your starter folder.

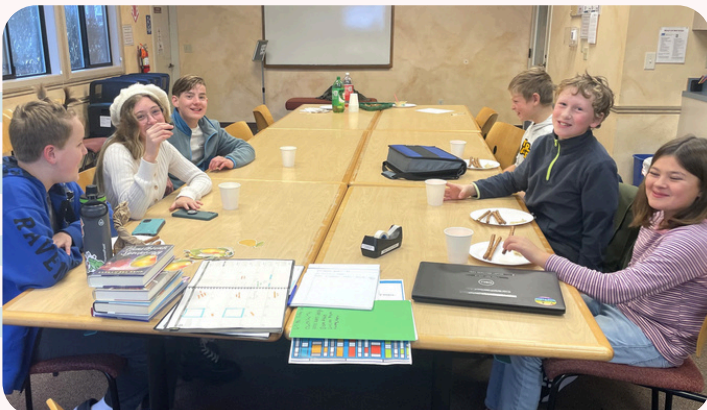


## AUTHOR TALKS

We've had the privilege to host several children's book authors, including **Dr. Gerry Ebalaroza-Tennell**, author of *Let's Live A.L.O.H.A* and **Rosanne Parry**, author of *A Wolf Called Wander* and *A Whale of the Wild*. Our gratitude to our partners of our author talks, including the Griffin Bay Bookstore.

## After School Programs

After-school hours are busy at the library! We offer a wide range of free programs for K-12th grade including **Art Bar, Lego League, monthly movies, book groups, DnD, and more!** See the Events Calendar on our website for the full list of programs.



## Teen Library Council

TLC began in 2022 and quickly became a **vital resource for the library**. This dedicated group of teens plan library programs, book displays, and more. Members also volunteer their time outside of meetings to facilitate programs such as the **Stuffed Animal Sleepover** and **Screen Free Family Trivia!**

The production & mailing of this publication is underwritten by:  
**Friends of the San Juan Island Library**  
**PO Box 786**  
**Friday Harbor, WA 98250**

**POSTAL PATRON**  
ECRWSS

Non-Profit Org.  
U.S. Postage  
PAID  
Friday Harbor, WA  
Permit No. 9



## Join the Friends of the Library today!

Name \_\_\_\_\_

Mailing Address \_\_\_\_\_

Email \_\_\_\_\_

Select your level of membership:

- ☐ Individual \$20
- ☐ Family \$35
- ☐ Business \$50
- ☐ Sustainer \$75
- ☐ Benefactor \$100
- ☐ Sponsor \$250
- ☐ Advocate \$500
- ☐ Patron \$1,000
- ☐ Additional Donation
- ☐ I am interested in helping with FOL activities!

**Sign Up  
Online!**



sjlibfriends.org

FOL memberships dues are a tax-deductible donation and the main fundraiser to support the Library.

## WITH GRATITUDE TO OUR FRIENDS MEMBERS

Your membership supports youth, adult, and outreach programs,  
Libby ebooks and eaudio, Hoopla streaming service, library  
volunteers, staff, and the publication of this newsletter.

**\*2024 members as of May 22nd, 2024**  
If your name is missing, please  
contact: fol@sjlib.org

### Individual (\$25)

Bruins, Sandra  
Burgess, Jenny  
Butler, Stephanie  
Campbell, JoAnne  
Cox, Barbara  
Cumming, Judith  
Daucinas, Vikky  
Drake, Beth  
Ewers, Tara  
Fagan, Frank  
Fletcher, Nancy Taft  
Garett, Jeanie  
Greene, Georgann  
Hall, Dianne  
Hanks, Laura  
Helstien, Beth  
Kirby, Sue  
Leschine, Sandra L.  
Long, Laura  
Longley, Alison  
Miller, Mary H.  
Moen, Nancy  
Owens, Debbie  
Scott, Elizabeth  
Teasdale, Janelle  
Wright, B. Carla

### Business (\$50)

Friday Harbor Drug  
Mulno Cove Creations, LLC  
Roche Harbor Resort  
Serendipity Books  
Stillpoint School

### Sustainer (\$75)

Arzarian, Kenneth  
Baumann, Joan Ruth &  
Richard Coffey  
Bentzen, Judy  
English, Donald & Deslie  
Goring, Linda  
Kick, Sharron & Patricia  
Francisco  
Mayhew, Stan & Karen  
Pope, Betsy & Chris

### Family (\$35)

Acheson, Alice  
Akins, Jill  
Anderson, Mark & Mary Jane  
Bennett, Lisa & Robin White  
Blaylock, Janice  
Clowers, Catherine & John Chessell  
Cowell, Kathleen  
Devine, Lucretia & Kent  
Dodge, George & Linda  
Dunn, Roxanne  
Gislason, Pat  
Gould, Douglas  
Graham, Gay  
Grodin, Ann  
Hansen, Mike & Jan  
Johnson, Joyce & Torry  
Larsen, Nancy  
Lehman, Ron & Trish  
Littlewood, Lorraine  
Lopez, Juan & Heidi  
Malenic, John & Stephanie Prima  
Mancarti, Gail & Jessica Palmer  
McCormick, Jerry & Dede  
Metzger, Gene & Annette  
Morris, Anthony & Abigail  
Moss, Randy & Kathy  
Porten, Steve & Shann Weston  
Pratt, Boyd & Lovell  
Rasmussen, Patricia & Gerald  
Reid, Andrew & Patricia  
Reid, Harry & Eileen  
Roberts, Ellen & Judy Lingerfelt  
Sabin, Karla  
Schuh, Randi  
Sears Family  
Sheplor, Nancy  
Spaulding, Chris & Beth  
Vandaveer, Dorothy  
Wainwright, Nick & Elizabeth  
Ward, Kathie & Bob  
Weil, Jane & David Smith  
Weisbrod, Rita & Dick  
Zeretzke, Dave & Mary

### Benefactor (\$100)

Adelberger, Eric & Audra  
Animal Inn  
Bolitho, Matthew & Megan  
Buettell, Mike & Sue  
Carli, Chris  
Carrier, John  
Conrad, Barbara & Dennis  
Conta, Bob & Barbara  
Crosby, Sarah  
DeShon, Loren & Kathie  
Devlin, Patricia  
Dreyer, Malinda  
Dunn, Barbara  
Eshelman, Deb & Wayne  
Friday Harbor Pet Supplies  
Glantz, Rammon  
Griffin, Mike & Jean  
Gross, Pamela & Charles Anderson  
Harvey, Dave & Nancy  
Hodges, Nancy  
Huesman, Jim  
Jennings, Lauren & Jeremy  
Lagios, Melina  
Larsen, John & Nancy  
Lockwood, Ross  
Madsen, Mark  
Mahoney, Susan M.  
Martin, Donna  
Mattox, Rich & Stephanie  
Mazzarella, Susan  
Metke, Thomas  
Moore, Rebecca & Fielding  
McGehee  
Nippolt, Candace & John  
Oettinger, Rick  
Olson, Neal  
Orton, Laurie  
Penwell, Frank & Patricia  
Robinson, Marty  
Saxe-Eyler, Amy  
Sharp, Barbara & Gary  
Shreve, Jean

### Benefactor (cont.)

Strathmann, Richard & Megumi  
Stricker, Susan & Steve  
Thompson, Gary & Linda  
Thompson, Steve & Julia  
Vedder, Karen & Jim  
Villa, Mariluz & Thomas Reynolds  
Vouri, Michael & Julia Coffey-Vouri  
Vulgares, Nick & Sue  
Wickham, Patricia R.  
Witter, George & Laurie Hannah

### Sponsor (\$250)

Adelman, Phyllis & David  
Island Petroleum Services  
Jenkins, Paulie & Theodore Carlsson  
Meat Machine Cycles  
O'Connor, Yoshi  
Peach, Cheryl  
Rosenberg, Susan & Allen  
Waxman, Bill & Carol

### Advocate (\$500)

Burch, Sara & Elliot  
Chedester, Denise  
Graham, Craig & Jean  
Hanson, Thor & Eliza Habegger  
Roochvarg, Alan & Lynn

### Patron (\$1,000+)

Drath, Dan & Eileen  
Haugen, Carolyn  
Miller, Kimberly  
Mulligan, George & Jessica  
Polster, Maguerite & Leonard  
Sager-Devirian, Lauri  
VanLund, Nina