



# “If the Library had more space,

I would recommend it be used for...

## Choose up to five:

- ... collection growth (books, audiobooks, large print, etc.)
- ... expansion of children's and teen areas and collections
- ... relocating children's and teen areas away from adult work and reading spaces
- ... program and meeting space for larger gatherings
- ... small meeting and study spaces
- ... more quiet, comfortable reading spots
- ... private study carrels and work spaces with technology connectors
- ... a dedicated maker-space for 3-D printing, crafts, activities
- ... more computer space and work tables with technology connectors
- ... expanding parking area, improving driveway safety, improving bike rack area
- ... improving pedestrian and driver comfort and safety
- ... outdoor green space, seating, programming areas
- ... improving efficiency and cost-saving operation of building infrastructure
- ... more display space for art, cultural objects, community information
- ... space for and acquiring a generator to allow the Library to become an emergency warming and cooling center for the community



# Current Problems...

...that are Getting Worse

## Which of these problems do you think are most critical? Choose 3!

### LITTLE QUIET READING AND STUDY SPACE

- Minimal comfortable seating areas for quiet reading
- No private consultation areas for staff and patrons

### MEETING SPACE - LARGE

- Library use of current room often blocked by previous booking
- Demand for public use of meeting room exceeds schedule capacity
- No space for community events with large attendance

### MEETING SPACE - SMALL

- No small study rooms
- No space for small group meetings
- No separate areas for noisy collaboration

### COLLECTIONS

- No space for book collection to grow
- Not enough space for children's and teens' collections
- Not enough space for audiobooks, DVDs, special collections
- No space to add new collections

### CHILDREN'S AND TEEN FACILITIES AND SERVICES

- Children's and teen areas too far apart for good supervision
- Children's and teen areas too close to work and study areas creating noise issues
- No direct outside access to/from children's area
- Inadequate space at Library for summer reading and other heavily attended programs

### PARKING

- Inadequate, difficult to access parking spaces
- Drive narrow and congested
- Unsafe as accidents occur regularly
- Inadequate security lighting to illuminate all areas

### OUTDOOR GATHERING SPACE

- No space for outdoor children's and other programming
- No outdoor seating
- No green space

### ENTRANCE AMENITIES

- No covered areas for public seating or staff access to book drop
- No safe book drop access out of traffic flow
- No safe passenger drop-off area

### BUILDING ISSUES

- Floor space use at maximum
- No flexible spaces and furniture for multi-purpose use
- Inadequate copy/print equipment and work space
- Inadequate space for expanding user work spaces and technology
- On-going basement and parking area flooding and drainage issues
- Restrooms difficult for ADA access

### SUPPORT SERVICES

- Inadequate workspace for staff to facilitate public services
- No staff breakroom, inadequate storage, no secure access
- No loading dock for deliveries



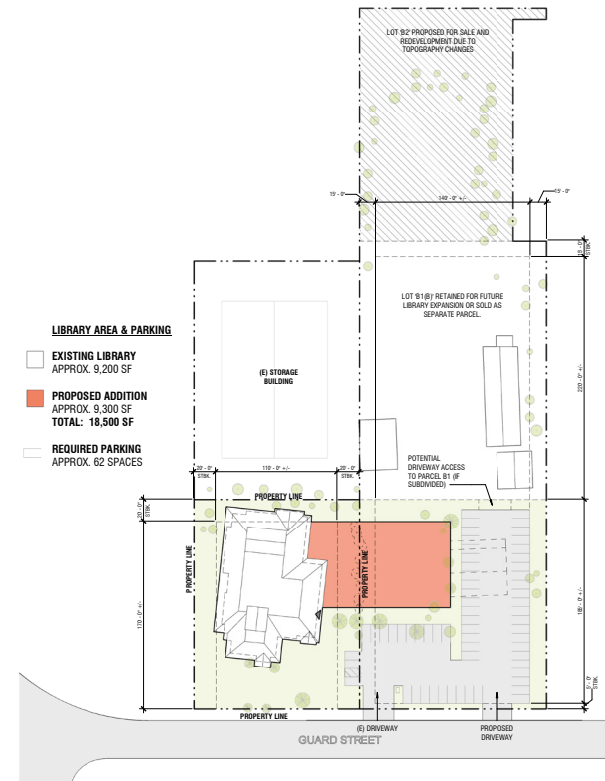
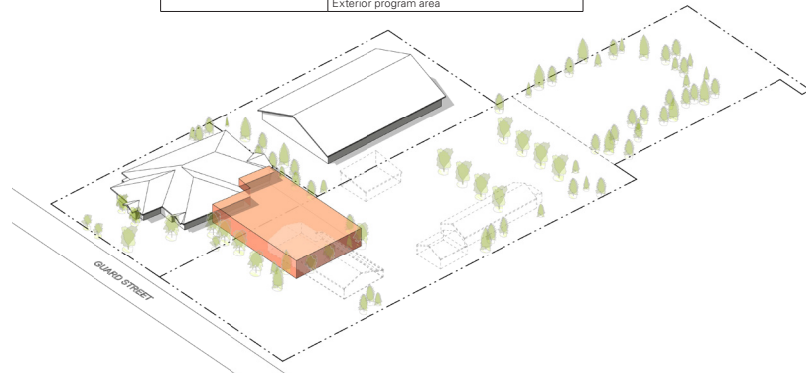
# Planning Options

Which of these options would you support?

## C: EXTEND LIBRARY ONTO NEXT-DOOR LOT

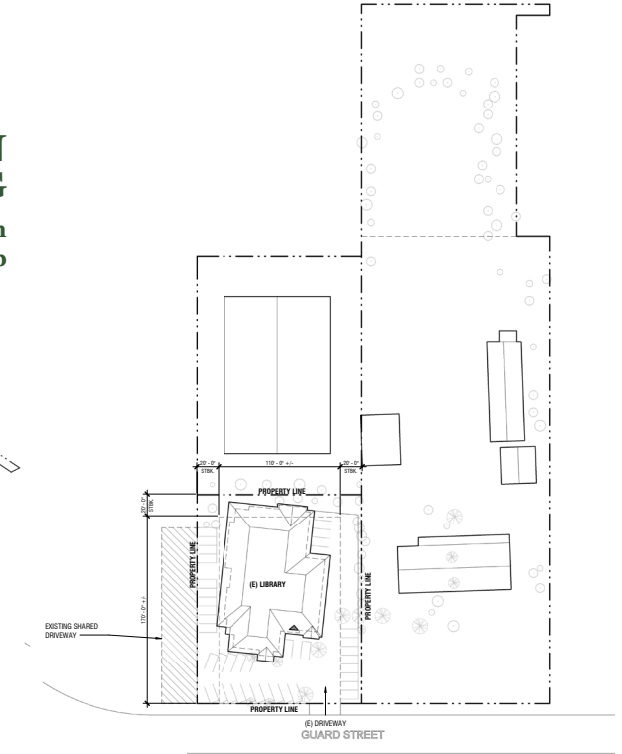
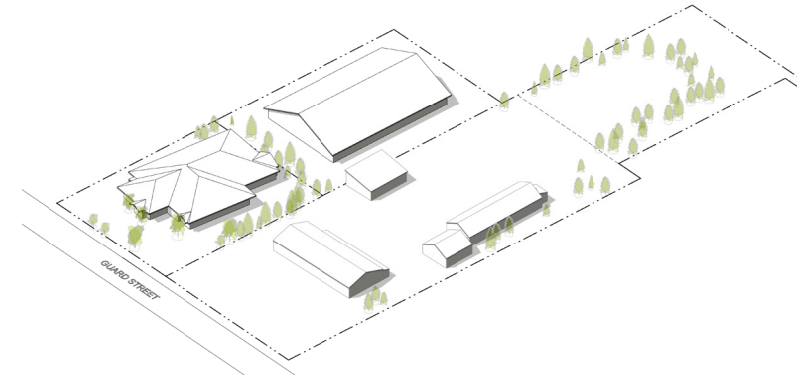
\$ 7.8 Million

CHALLENGES	OPPORTUNITIES
Property sale/subdivision coordination and negotiation	Utilize existing building
Requires extensive systems upgrade; electrical, mechanical, fire protection	Phaseable- existing building could remain largely operational during construction with a reduction in services
Operations- sightlines	Parking expansion
	Access to daylight
	Exterior program area



## E: MAINTAIN EXISTING BUILDING

No additional space expansion  
Increasing costs for maintenance and upkeep

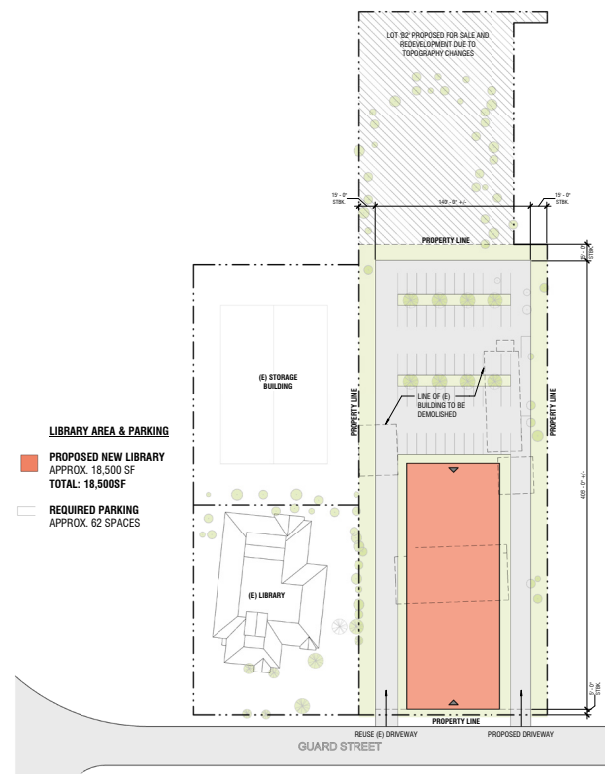
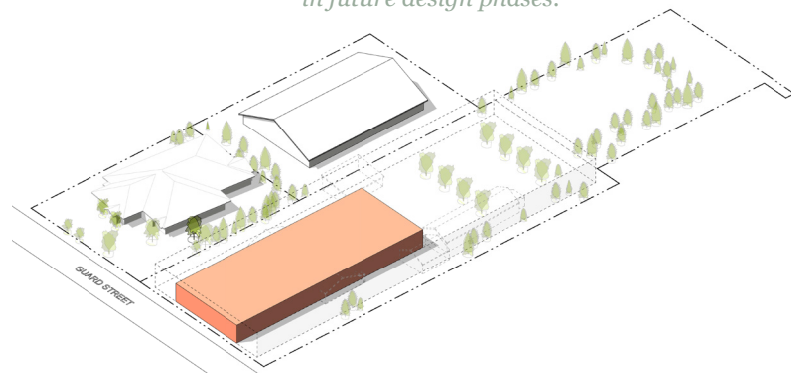


## D: NEW LIBRARY ON NEW SITE

\$ 8.1 Million

CHALLENGES	OPPORTUNITIES
Site acquisition costs	New building: light, air, flexibility, circulation flow
Unknowns: soil condition, hazardous materials	Parking options
	Relationship to street
	Phaseable- Library could remain operational on existing site during construction with minor disruption in services
	Building expansion area for long term growth
	Least operational costs

Additional sites to be considered in future design phases.



### WITHOUT ADDITIONAL SPACE, WE WILL NEED TO PROVIDE LESS. FOR INSTANCE:

1. Reduce collection sizes
2. Limit program attendance
3. Move programs off-site; decrease to off-set additional rental costs
4. Offer fewer meeting room reservations to outside library groups
5. Change study room to staff work area
6. Decrease interlibrary loan services
7. Decrease session times on public computer use
8. Limit educational programs that need more room
9. Limit new technology
10. Reduce open hours
11. Decline to consider new services or collections
12. Decrease funds for collections and programs as costs for repairs, improvements, off-site storage and venues increase
13. Others as needed...

### IN ADDITION, WE DON'T SOLVE PROBLEMS AS:

1. Dangerous and inadequate parking lot
2. Inadequate quiet reading areas
3. Insufficient space for noisier, collaborative groups
4. Noise from children's and teen areas
5. No on-site space for Friends of the Library storage
6. And more...