

State of Washington

2015 Population Trends

Forecasting & Research Division
Office of Financial Management
September 2015



To accommodate persons with disabilities, this document is available in alternative formats by calling the Office of Financial Management at 360-902-0599. TTY/TDD users should contact OFM via the Washington Relay Service at 711 or 1-800-833-6388.
This publication and other current and historical demographic data are available electronically.

Visit our website at www.ofm.wa.gov.

TABLE OF CONTENTS

1	Part 1. State, County and City Populations
1	Summary of Population Trends: Washington State
1	Figure 1: State Population Change and Components of Change
2	Figure 2: Driver's Licenses Surrendered to Washington
2	Figure 3: Births, Deaths and Natural Increase
3	Figure 4: Change in Housing Units
3	Summary of Population Trends: Counties and Cities
4	Figure 5: Percentage Change in Population by Region
5	Figure 6: Distribution of Population Change by County
6	Part 2. Data Tables
6	Table 1: Population and Components of Population Change: 1920 to 2015
7	Table 2: Population and Components of Population Change by County: April 1, 2000, to April 1, 2010
8	Table 3: Population and Components of Population Change by County: April 1, 2010, to April 1, 2015
9	Table 4: Populations of Cities, Towns and Counties: April 1, 2010, to April 1, 2015
16	Table 5: Notes on Census Corrections and the Differences between the 2010 Federal Census Public Law 94-171, Counts and the Official 2010 Population Estimates by OFM
18	Table 6: Rank of Cities and Towns by April 1, 2015, Population Size
24	Table 7: Alphabetical Listing of Cities and Towns with Population for April 1, 2015
27	Table 8: Housing Units by Structure Type for Cities, Towns and Counties: April 1, 2010, and April 1, 2015
35	Table 9: Annexations, Incorporations, and Other Municipal Boundary Changes Approved by OFM
42	Table 10: Population Age 65 Years and Over by County
43	Part 3. Supplemental Population Information
43	Washington State Statutes Related to the Population Estimates Program
43	Population Estimates Development
44	Small Area Estimates Program
45	Population Data Products
46	Washington State Data Center and Business and Industry Data Center
48	Acknowledgments

Part 1

STATE, COUNTY AND CITY POPULATIONS

POPULATION TRENDS provides demographic data for Washington state counties, cities and towns as of April 1, 2015. Population determinations contained in this document are developed by the Office of Financial Management and represent the state’s official population figures. Population figures for Washington’s counties, cities and towns have been prepared on an annual basis for more than four decades. These estimates are cited in numerous statutes using population as criteria for fund allocation, program eligibility and determining county participation under the Growth Management Act.

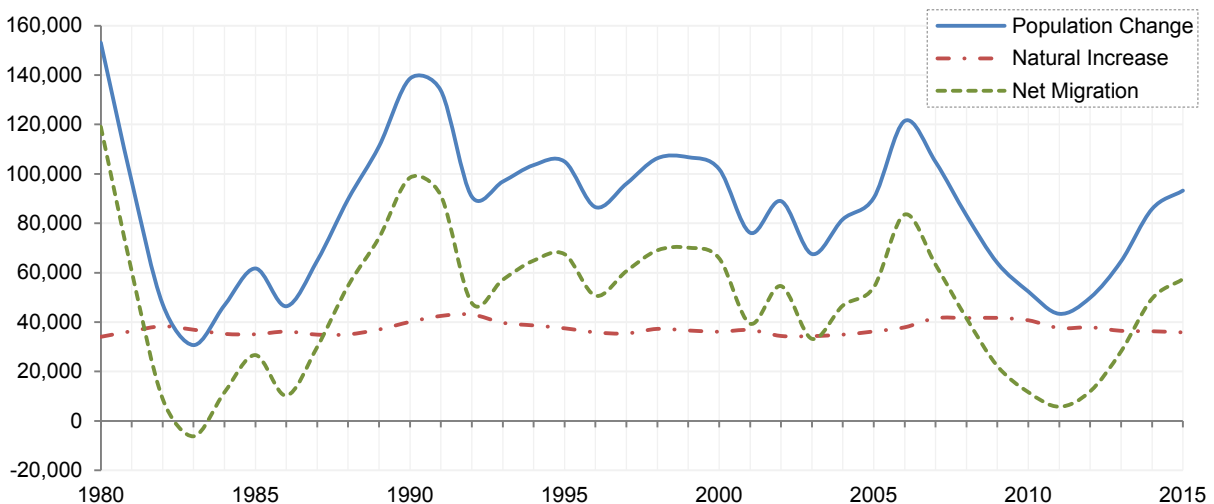
The 2015 population estimates will be used for state program administration and in allocation of selected state revenues beginning in January 2016 as specified in RCW 43.62.020, 36.13.100, 43.62.030, 66.08.200 and 66.08.210.

Summary of Population Trends: Washington State

The April 1, 2015, population estimate places Washington’s population at 7,061,400. Representing an increase of 93,200 persons since last year, this 1.34 percent gain — up from 1.25 percent in 2014 — marks the largest one-year increase since 2008.

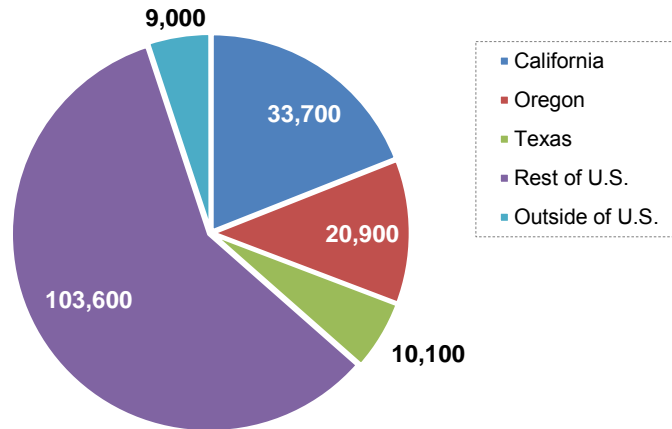
The increase in the population growth rate is mainly due to migration. The net migration gain of 57,400 persons accounted for 62 percent of the state’s population growth, with natural increase (births minus deaths) responsible for the other 38 percent. In 2013 and 2014, net migration as a share of total growth was 44 percent and 58 percent, respectively. This is the second consecutive year that migration has exceeded the prior decade average of 45,000.

Figure 1. State Population Change and Components of Change



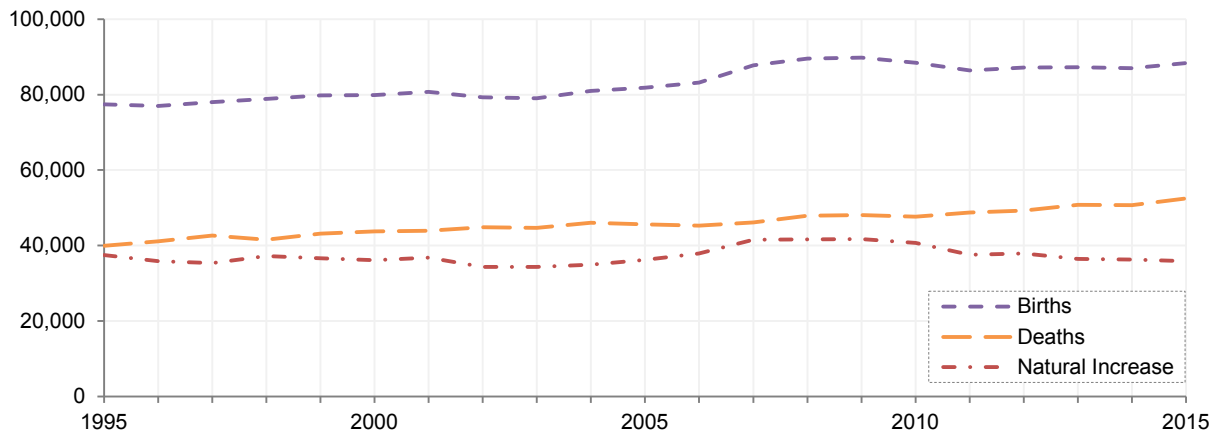
Driver's license data can be used to provide trend information about migration flows between Washington and other states. Analysis of drivers' movements reveals an increase in net migration since the beginning of the decade. Approximately 36 percent of in-movers to Washington last year came from California, Oregon and Texas. The 12-month moving sum of in-movers from these three states is 64,700, up 7,300 from last year. The remaining states accounted for 58 percent of in-migrants, with 5 percent arriving from other countries.

Figure 2. Driver's Licenses Surrendered to Washington



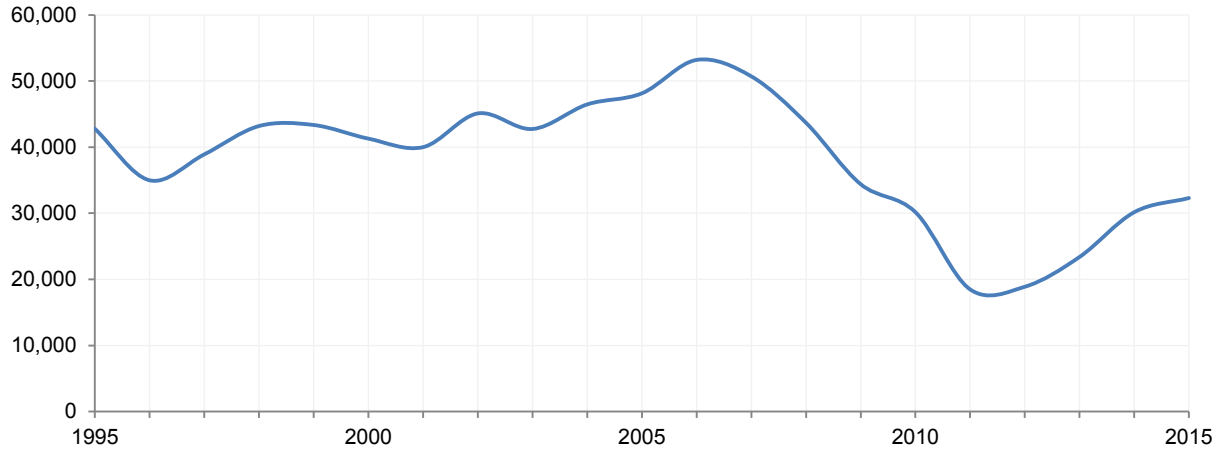
Population growth due to natural increase continues to slow. In 2006, the children of the baby boomers started reaching child-bearing age, and the number of births in Washington began to increase. Contrary to expectations, the upward trend in births did not continue. About the same time, the number of deaths began to increase, along with the graying of the state's population. Over the past year, 35,800 persons were added to the state's population due to natural increase, down from 36,300 the prior year.

Figure 3. Births, Deaths and Natural Increase



Housing, another indicator of population change, continued to strengthen in 2015. Housing growth in 2015 increased by 7.1 percent over the previous year. Washington added 32,300 housing units last year — 2,100 more than the previous year but still considerably lower than the prior decade average of 43,500 housing units per year. Statewide, 52 percent of all new housing units were associated with multi-family structures.

Figure 4. Change in Housing Units

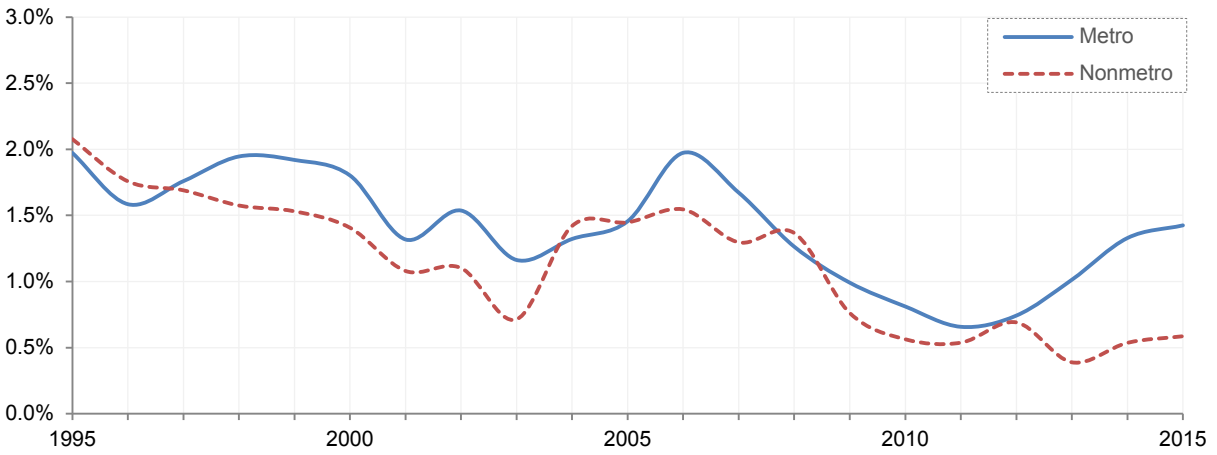
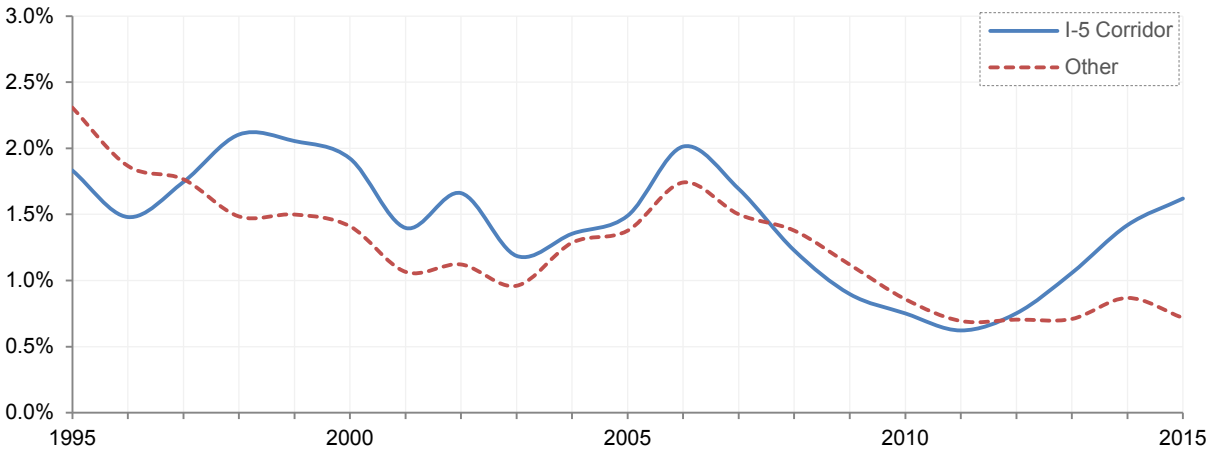
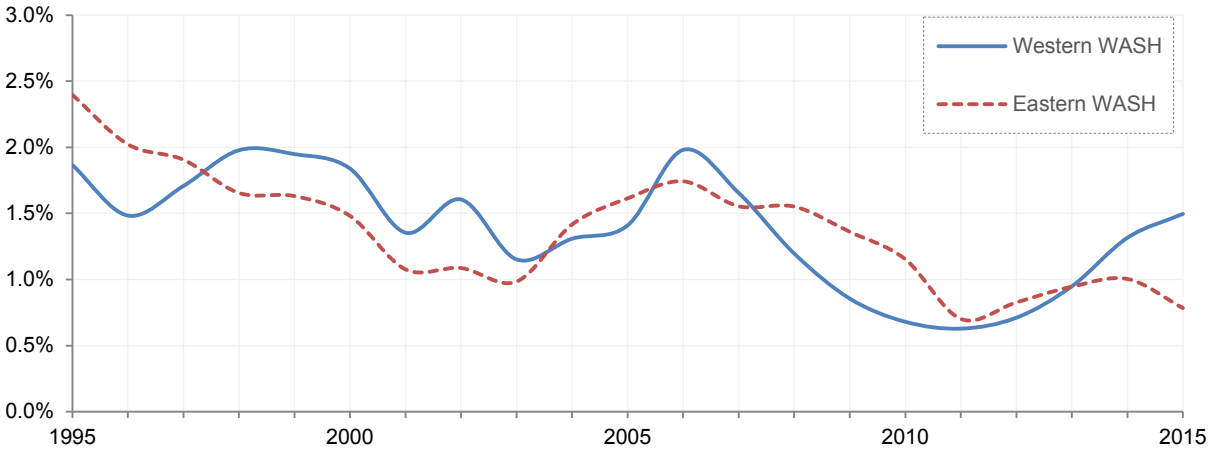


Summary of Population Trends: Counties and Cities

Population growth continues to be concentrated in large metropolitan counties. Seventy-nine percent of the growth occurred in the state’s five largest counties: King, Pierce, Snohomish, Spokane and Clark, respectively. King County accounted for the largest share of state growth this year, with 38 percent, followed by Snohomish at 18 percent and Clark at 10 percent. The state’s 18 non-metropolitan counties accounted for less than 5 percent of population growth.

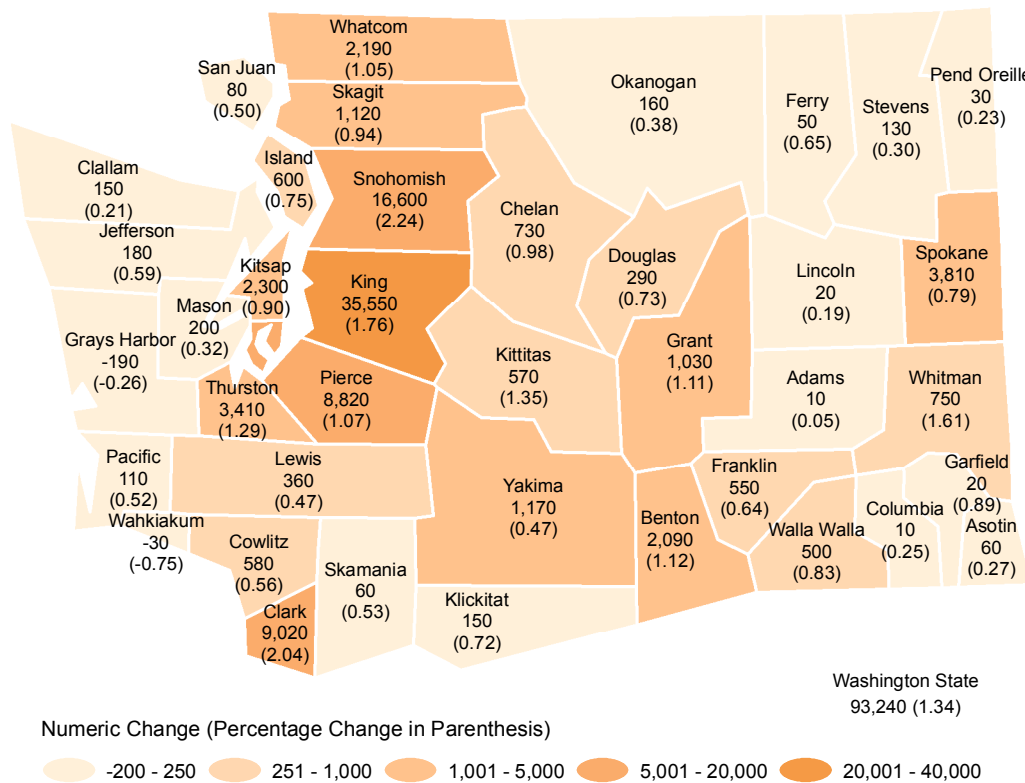
Different county classification schemes can be used to examine population change in more detail. In 2015, Eastern Washington grew by 0.8 percent and Western Washington by 1.5 percent. Counties along the Interstate 5 corridor grew by 1.6 percent versus 0.7 percent for rest of the state. A similar pattern exists for metropolitan counties, which grew 1.4 percent compared to nonmetropolitan counties, which grew 0.6 percent.

Figure 5. Percentage Change in Population by Region



The geographic distribution of population change by county can be seen in Figure 6. Snohomish and Clark counties experienced the largest percentage increase in annual growth at 2.2 percent and 2.0 percent, respectively. In 2015, 10 counties experienced growth exceeding 1.0 percent. Three of these counties are nonmetropolitan counties (Grant, Kittitas and Whitman). Two counties, Grays Harbor and Wahkiakum, lost population this past year.

Figure 6. Distribution of Population Change by County



The population of Washington state incorporated places totaled 4,564,400 on April 1, 2015, an increase of 67,000 people since last year. Most of the population growth in incorporated areas was due to natural increase and net migration rather than annexation. Only 1,700 people were annexed this past year, which is considerably lower than the prior decade average of 24,400 persons per year and the second-lowest number on record.

The state's unincorporated area population increased by 26,300 persons over the previous year. The five most-populous unincorporated county areas (Pierce, Snohomish, King, Clark and Kitsap, respectively) have almost as much population as the five largest cities in the state (Seattle, Spokane, Tacoma, Vancouver and Bellevue, respectively): 1.36 million versus 1.38 million, respectively.

DATA TABLES

Table 1. Population and Components of Population Change: 1920 to 2015

	April 1 Population	Population		Components of Change from Previous Period						
		Number	Percent	Births		Deaths		Natural Increase	Net Migration	
				Number	Rate	Number	Rate		Number	Rate
10-Year Intervals										
1920	1,356.6	214.6	18.8	227.7	182.2	122.4	98.0	105.2	109.4	87.6
1930	1,563.4	206.8	15.2	248.2	170.0	151.1	103.5	97.1	109.7	75.1
1940	1,736.2	172.8	11.1	233.6	141.6	176.9	107.2	56.7	116.1	70.4
1950	2,379.0	642.8	37.0	452.5	219.9	211.6	102.8	240.9	401.9	195.3
1960	2,853.2	474.3	19.9	624.0	238.5	240.6	92.0	383.5	90.8	34.7
1970	3,413.3	560.0	19.6	589.3	188.1	282.4	90.1	306.8	253.2	80.8
1980	4,132.4	719.1	21.1	547.6	145.1	302.1	80.1	245.5	473.6	125.5
1990	4,866.7	734.3	17.8	705.1	156.7	339.9	75.6	365.2	369.2	82.0
2000	5,894.1	1,027.5	21.1	787.5	146.4	404.8	75.2	382.7	644.8	119.8
2010	6,724.5	830.4	14.1	840.6	133.2	460.4	73.0	380.3	450.1	71.3
Single Years										
1971	3,436.3	23.1	0.7	60.0	17.5	29.8	8.7	30.3	-7.2	-2.1
1972	3,430.3	-6.0	-0.2	53.1	15.5	30.4	8.9	22.7	-28.7	-8.3
1973	3,444.3	14.0	0.4	47.7	13.9	30.4	8.8	17.3	-3.3	-1.0
1974	3,508.7	64.4	1.9	48.2	13.9	29.9	8.6	18.2	46.2	13.3
1975	3,567.9	59.2	1.7	50.1	14.2	30.3	8.6	19.8	39.4	11.1
1976	3,634.9	67.0	1.9	51.4	14.3	30.2	8.4	21.2	45.8	12.7
1977	3,715.4	80.5	2.2	54.2	14.7	29.1	7.9	25.1	55.4	15.1
1978	3,836.2	120.8	3.3	57.3	15.2	30.4	8.1	26.8	94.0	24.9
1979	3,979.2	143.0	3.7	60.2	15.4	30.2	7.7	30.1	113.0	28.9
1980	4,132.4	153.2	3.8	65.4	16.1	31.3	7.7	34.0	119.1	29.4
1981	4,229.3	96.9	2.3	68.2	16.3	31.8	7.6	36.3	60.6	14.5
1982	4,276.5	47.3	1.1	70.1	16.5	31.7	7.5	38.3	8.9	2.1
1983	4,307.2	30.7	0.7	69.5	16.2	32.5	7.6	36.9	-6.2	-1.4
1984	4,354.1	46.8	1.1	68.5	15.8	33.2	7.7	35.2	11.6	2.7
1985	4,415.8	61.7	1.4	69.1	15.8	34.0	7.8	35.1	26.6	6.1
1986	4,462.2	46.4	1.1	70.2	15.8	34.0	7.7	36.2	10.2	2.3
1987	4,527.1	64.9	1.5	69.3	15.4	34.4	7.6	34.9	30.0	6.7
1988	4,616.9	89.8	2.0	71.0	15.5	36.0	7.9	35.0	54.7	12.0
1989	4,728.1	111.2	2.4	73.0	15.6	36.0	7.7	37.0	74.2	15.9
1990	4,866.7	138.6	2.9	76.4	15.9	36.2	7.6	40.1	98.5	20.5
1991	5,000.4	133.7	2.7	79.1	16.0	36.6	7.4	42.5	91.2	18.5
1992	5,091.1	90.8	1.8	80.2	15.9	37.2	7.4	43.1	47.7	9.5
1993	5,188.0	96.9	1.9	79.1	15.4	39.4	7.7	39.7	57.1	11.1
1994	5,291.6	103.6	2.0	78.2	14.9	39.5	7.5	38.7	64.9	12.4
1995	5,396.6	105.0	2.0	77.5	14.5	40.0	7.5	37.5	67.5	12.6
1996	5,483.1	86.5	1.6	77.0	14.2	41.2	7.6	35.9	50.7	9.3
1997	5,579.1	96.0	1.8	78.0	14.1	42.6	7.7	35.4	60.6	11.0
1998	5,685.5	106.3	1.9	78.8	14.0	41.6	7.4	37.3	69.1	12.3
1999	5,792.2	106.8	1.9	79.8	13.9	43.1	7.5	36.6	70.1	12.2
2000	5,894.1	101.9	1.8	79.9	13.7	43.7	7.5	36.1	65.8	11.3
2001	5,970.3	76.2	1.3	80.7	13.6	43.9	7.4	36.8	39.4	6.6
2002	6,059.3	89.0	1.5	79.3	13.2	44.9	7.5	34.4	54.6	9.1
2003	6,126.9	67.6	1.1	79.1	13.0	44.7	7.3	34.3	33.2	5.5
2004	6,208.5	81.6	1.3	81.0	13.1	46.0	7.5	34.9	46.7	7.6
2005	6,298.8	90.3	1.5	81.8	13.1	45.6	7.3	36.2	54.1	8.6
2006	6,420.3	121.4	1.9	83.2	13.1	45.3	7.1	37.9	83.5	13.1
2007	6,525.1	104.8	1.6	87.8	13.6	46.2	7.1	41.6	63.2	9.8
2008	6,608.2	83.2	1.3	89.6	13.6	47.9	7.3	41.6	41.5	6.3
2009	6,672.2	63.9	1.0	89.8	13.5	48.1	7.2	41.7	22.2	3.3
2010	6,724.5	52.4	0.8	88.4	13.2	47.7	7.1	40.7	11.6	1.7
2011	6,767.9	43.4	0.6	86.4	12.8	48.8	7.2	37.6	5.8	0.9
2012	6,817.8	49.9	0.7	87.1	12.8	49.2	7.2	37.9	12.0	1.8
2013	6,882.4	64.6	0.9	87.3	12.7	50.8	7.4	36.5	28.2	4.1
2014	6,968.2	85.8	1.2	87.0	12.6	50.7	7.3	36.3	49.5	7.1
2015	7,061.4	93.2	1.3	88.4	12.6	52.5	7.5	35.8	57.4	8.2

- Notes:
- Year 2014 and 2015 vital events data are estimated.
 - Rates are calculated per 1,000 midpoint population based on unrounded numbers.
 - Totals may not add due to rounding.

Table 2. Population and Components of Population Change by County: April 1, 2000, to April 1, 2010

	Federal Census		Total Change: 2000 to 2010						Rank by Percent Change
	2000	2010	Numeric Change	Percent Change	Births	Deaths	Natural Increase	Net Migration	
Washington	5,894,143	6,724,540	830,397	14.09	840,441	460,376	380,065	450,332	--
Adams	16,428	18,728	2,300	14.00	3,838	1,117	2,721	-421	11
Asotin	20,551	21,623	1,072	5.22	2,437	2,085	352	720	32
Benton	142,475	175,177	32,702	22.95	22,766	10,747	12,019	20,683	3
Chelan	66,616	72,453	5,837	8.76	9,681	5,881	3,800	2,037	26
Clallam	64,179	71,404	7,225	11.26	6,250	8,478	-2,228	9,453	18
Clark	345,238	425,363	80,125	23.21	55,599	25,968	29,631	50,494	2
Columbia	4,064	4,078	14	0.34	367	465	-98	112	37
Cowlitz	92,948	102,410	9,462	10.18	12,670	9,736	2,934	6,528	21
Douglas	32,603	38,431	5,828	17.88	4,958	2,603	2,355	3,473	9
Ferry	7,260	7,551	291	4.01	710	680	30	261	34
Franklin	49,347	78,163	28,816	58.39	14,187	3,083	11,104	17,712	1
Garfield	2,397	2,266	-131	-5.47	176	269	-93	-38	39
Grant	74,698	89,120	14,422	19.31	14,879	5,713	9,166	5,256	8
Grays Harbor	67,194	72,797	5,603	8.34	8,364	7,799	565	5,038	28
Island	71,558	78,506	6,948	9.71	9,483	5,941	3,542	3,406	24
Jefferson	26,299	29,872	3,573	13.59	2,051	2,960	-909	4,482	12
King	1,737,046	1,931,249	194,203	11.18	233,997	115,358	118,639	75,564	19
Kitsap	231,969	251,133	19,164	8.26	29,683	18,247	11,436	7,728	29
Kittitas	33,362	40,915	7,553	22.64	3,733	2,527	1,206	6,347	5
Klickitat	19,161	20,318	1,157	6.04	2,200	1,668	532	625	31
Lewis	68,600	75,455	6,855	9.99	9,001	7,568	1,433	5,422	22
Lincoln	10,184	10,570	386	3.79	961	1,137	-176	562	36
Mason	49,405	60,699	11,294	22.86	6,007	5,486	521	10,773	4
Okanogan	39,564	41,120	1,556	3.93	5,331	3,756	1,575	-19	35
Pacific	20,984	20,920	-64	-0.30	1,971	2,979	-1,008	944	38
Pend Oreille	11,732	13,001	1,269	10.82	1,260	1,308	-48	1,317	20
Pierce	700,818	795,225	94,407	13.47	106,979	55,015	51,964	42,443	14
San Juan	14,077	15,769	1,692	12.02	983	1,192	-209	1,901	17
Skagit	102,979	116,901	13,922	13.52	14,614	10,193	4,421	9,501	13
Skamania	9,872	11,066	1,194	12.09	1,057	733	324	870	16
Snohomish	606,024	713,335	107,311	17.71	89,529	41,722	47,807	59,504	10
Spokane	417,939	471,221	53,282	12.75	57,342	37,621	19,721	33,561	15
Stevens	40,066	43,531	3,465	8.65	4,567	3,902	665	2,800	27
Thurston	207,355	252,264	44,909	21.66	27,502	17,239	10,263	34,646	6
Wahkiakum	3,824	3,978	154	4.03	287	486	-199	353	33
Walla Walla	55,180	58,781	3,601	6.53	6,966	5,435	1,531	2,070	30
Whatcom	166,826	201,140	34,314	20.57	21,161	13,298	7,863	26,451	7
Whitman	40,740	44,776	4,036	9.91	4,121	2,215	1,906	2,130	23
Yakima	222,581	243,231	20,650	9.28	42,773	17,766	25,007	-4,357	25

Calculation:	1	2	3=2-1	4=3/1*100	5	6	7=5-6	8=3-7
---------------------	----------	----------	--------------	------------------	----------	----------	--------------	--------------

Notes: • Rankings based on unrounded numbers.

Table 3. Population and Components of Population Change by County: April 1, 2010, to April 1, 2015

	Census 2010	Estimate 2011	Estimate 2012	Estimate 2013	Estimate 2014	Estimate 2015	Total Change: 2010 to 2015					Rank by Percent Change	
							Numeric Change	Percent Change	Births	Deaths	Natural Increase		Net Migration
Washington	6,724,540	6,767,900	6,817,770	6,882,400	6,968,170	7,061,410	336,870	5.01	436,166	252,059	184,107	152,763	--
Adams	18,728	18,950	19,050	19,200	19,400	19,410	682	3.64	2,033	606	1,427	-745	13
Asotin	21,623	21,650	21,700	21,800	21,950	22,010	387	1.79	1,223	1,141	82	305	30
Benton*	175,177	177,900	180,000	183,400	186,500	188,590	13,413	7.66	12,865	6,326	6,539	6,874	2
Chelan*	72,453	72,700	73,200	73,600	74,300	75,030	2,577	3.56	4,667	3,363	1,304	1,273	15
Clallam*	71,404	71,600	72,000	72,350	72,500	72,650	1,246	1.75	3,351	4,631	-1,280	2,526	31
Clark*	425,363	428,000	431,250	435,500	442,800	451,820	26,457	6.22	27,187	15,397	11,790	14,667	4
Columbia*	4,078	4,100	4,100	4,100	4,080	4,090	12	0.29	175	267	-92	104	37
Cowlitz	102,410	102,700	103,050	103,300	103,700	104,280	1,870	1.83	5,952	5,313	639	1,231	28
Douglas*	38,431	38,650	38,900	39,280	39,700	39,990	1,559	4.06	2,598	1,545	1,053	506	12
Ferry*	7,551	7,600	7,650	7,650	7,660	7,710	159	2.11	359	413	-54	213	26
Franklin*	78,163	80,500	82,500	84,800	86,600	87,150	8,987	11.50	8,315	1,778	6,537	2,450	1
Garfield*	2,266	2,250	2,250	2,250	2,240	2,260	-6	-0.26	105	134	-29	23	39
Grant*	89,120	90,100	91,000	91,800	92,900	93,930	4,810	5.40	7,698	3,282	4,416	394	8
Grays Harbor	72,797	72,900	73,150	73,200	73,300	73,110	313	0.43	3,964	3,908	56	257	36
Island*	78,506	78,800	79,350	79,700	80,000	80,600	2,094	2.67	4,475	3,273	1,202	892	23
Jefferson*	29,872	30,050	30,175	30,275	30,700	30,880	1,008	3.37	971	1,694	-723	1,731	16
King*	1,931,249	1,942,600	1,957,000	1,981,900	2,017,250	2,052,800	121,551	6.29	124,476	61,316	63,160	58,391	3
Kitsap*	251,133	253,900	254,500	254,000	255,900	258,200	7,067	2.81	14,871	10,144	4,727	2,340	21
Kittitas*	40,915	41,300	41,500	41,900	42,100	42,670	1,755	4.29	2,021	1,367	654	1,101	11
Klickitat	20,318	20,500	20,600	20,700	20,850	21,000	682	3.36	1,064	893	171	511	17
Lewis*	75,455	76,000	76,300	76,200	76,300	76,660	1,205	1.60	4,426	4,078	348	857	32
Lincoln	10,570	10,600	10,675	10,675	10,700	10,720	150	1.42	488	575	-87	237	33
Mason*	60,699	61,100	61,450	61,800	62,000	62,200	1,501	2.47	3,114	3,125	-11	1,512	25
Okanogan	41,120	41,200	41,425	41,500	41,700	41,860	740	1.80	2,675	2,089	586	154	29
Pacific*	20,920	20,900	20,970	21,000	21,100	21,210	290	1.39	971	1,541	-570	860	34
Pend Oreille*	13,001	13,000	13,100	13,150	13,210	13,240	239	1.84	554	692	-138	377	27
Pierce*	795,225	802,150	808,200	814,500	821,300	830,120	34,895	4.39	56,047	29,404	26,643	8,252	9
San Juan*	15,769	15,900	15,925	16,000	16,100	16,180	411	2.61	458	659	-201	612	24
Skagit*	116,901	117,400	117,950	118,600	119,500	120,620	3,719	3.18	7,242	5,526	1,716	2,003	19
Skamania	11,066	11,150	11,275	11,300	11,370	11,430	364	3.29	495	401	94	270	18
Snohomish*	713,335	717,000	722,900	730,500	741,000	757,600	44,265	6.21	46,164	23,937	22,227	22,038	5
Spokane*	471,221	472,650	475,600	480,000	484,500	488,310	17,089	3.63	29,640	20,461	9,179	7,910	14
Stevens*	43,531	43,600	43,700	43,800	43,900	44,030	499	1.15	2,216	2,120	96	403	35
Thurston*	252,264	254,100	256,800	260,100	264,000	267,410	15,146	6.00	15,438	9,814	5,624	9,522	6
Wahkiakum	3,978	4,000	4,025	4,020	4,010	3,980	2	0.05	148	239	-91	93	38
Walla Walla*	58,781	58,800	59,100	59,500	60,150	60,650	1,869	3.18	3,393	2,716	677	1,192	20
Whatcom*	201,140	202,100	203,500	205,800	207,600	209,790	8,650	4.30	11,375	7,460	3,915	4,735	10
Whitman	44,776	44,800	45,950	46,000	46,500	47,250	2,474	5.53	2,231	1,260	971	1,503	7
Yakima*	243,231	244,700	246,000	247,250	248,800	249,970	6,739	2.77	20,721	9,171	11,550	-4,811	22
Calculation:	1					2	3=2-1	4=3/1*100	5	6	7=5-6	8=3-7	

Symbols: * Counties currently planning under the Growth Management Act.

- Notes:
- Year 2014 and 2015 vital events data are estimated.
 - Totals may not add due to rounding.
 - Rankings based on unrounded numbers.

Table 4. Populations of Cities, Towns and Counties: April 1, 2010, to April 1, 2015

County Municipality	Census 2010	Estimate 2011	Estimate 2012	Estimate 2013	Estimate 2014	Estimate 2015
Adams	18,728	18,950	19,050	19,200	19,400	19,410
Unincorporated	8,818	8,960	8,980	9,040	9,135	9,085
Incorporated	9,910	9,990	10,070	10,160	10,265	10,325
Hatton	101	100	105	110	110	110
Lind	564	560	565	570	565	560
Othello	7,364	7,420	7,495	7,565	7,695	7,780
Ritzville	1,673	1,705	1,695	1,700	1,680	1,670
Washtucna	208	205	210	215	215	205
Asotin	21,623	21,650	21,700	21,800	21,950	22,010
Unincorporated	13,143	13,195	13,240	13,325	13,460	13,515
Incorporated	8,480	8,455	8,460	8,475	8,490	8,495
Asotin	1,251	1,255	1,255	1,265	1,265	1,260
Clarkston	7,229	7,200	7,205	7,210	7,225	7,235
Benton	175,177	177,900	180,000	183,400	186,500	188,590
Unincorporated	32,639	33,020	33,300	33,710	34,020	34,130
Incorporated	142,538	144,880	146,700	149,690	152,480	154,460
Benton City	3,038	3,145	3,295	3,240	3,255	3,285
Kennewick	73,917	74,665	75,160	76,410	77,700	78,290
Prosser	5,714	5,780	5,785	5,810	5,815	5,845
Richland	48,058	49,090	49,890	51,150	52,090	53,080
West Richland	11,811	12,200	12,570	13,080	13,620	13,960
Chelan	72,453	72,700	73,200	73,600	74,300	75,030
Unincorporated	30,498	30,500	30,680	30,960	31,090	31,580
Incorporated	41,955	42,200	42,520	42,640	43,210	43,450
Cashmere	3,063	3,075	3,075	3,055	3,010	3,040
Chelan	3,890	3,930	3,940	3,955	4,020	4,045
Entiat	1,112	1,135	1,135	1,140	1,140	1,155
Leavenworth	1,965	1,970	1,970	1,970	1,970	1,980
Wenatchee	31,925	32,090	32,400	32,520	33,070	33,230
Clallam	71,404	71,600	72,000	72,350	72,500	72,650
Unincorporated	42,228	42,395	42,560	42,830	42,935	43,030
Incorporated	29,176	29,205	29,440	29,520	29,565	29,620
Forks	3,532	3,500	3,545	3,545	3,565	3,565
Port Angeles	19,038	19,080	19,100	19,120	19,090	19,140
Sequim	6,606	6,625	6,795	6,855	6,910	6,915
Clark	425,363	428,000	431,250	435,500	442,800	451,820
Unincorporated	203,339	204,610	205,885	207,710	210,140	214,585
Incorporated	222,024	223,390	225,365	227,790	232,660	237,235
Battle Ground	17,571	17,780	17,920	18,130	18,680	19,250
Camas	19,355	19,620	20,020	20,320	20,880	21,210
La Center	2,800	2,835	2,985	3,015	3,050	3,100
Ridgefield	4,763	4,975	5,210	5,545	6,035	6,400
Vancouver	161,791	162,300	163,200	164,500	167,400	170,400
Washougal	14,095	14,210	14,340	14,580	14,910	15,170
Woodland <i>part</i>	83	85	85	85	85	85
Yacolt	1,566	1,585	1,605	1,615	1,620	1,620
Columbia	4,078	4,100	4,100	4,100	4,080	4,090
Unincorporated	1,423	1,435	1,435	1,425	1,405	1,410
Incorporated	2,655	2,665	2,665	2,675	2,675	2,680
Dayton	2,526	2,535	2,535	2,545	2,545	2,550
Starbuck	129	130	130	130	130	130
Cowlitz	102,410	102,700	103,050	103,300	103,700	104,280
Unincorporated	44,085	44,225	44,180	44,345	44,515	44,765
Incorporated	58,325	58,475	58,870	58,955	59,185	59,515
Castle Rock	1,982	1,995	2,135	2,135	2,145	2,175
Kalama	2,344	2,365	2,390	2,400	2,430	2,500
Kelso	11,925	11,920	11,930	11,940	11,960	11,950
Longview	36,648	36,730	36,910	36,940	37,040	37,130
Woodland <i>part</i>	5,426	5,465	5,505	5,540	5,610	5,760

Table 4. Populations of Cities, Towns and Counties: April 1, 2010, to April 1, 2015 (continued)

County Municipality	Census 2010	Estimate 2011	Estimate 2012	Estimate 2013	Estimate 2014	Estimate 2015
Douglas	38,431	38,650	38,900	39,280	39,700	39,990
Unincorporated	20,399	20,590	20,760	21,060	21,430	21,610
Incorporated	18,032	18,060	18,140	18,220	18,270	18,380
Bridgeport	2,409	2,405	2,415	2,425	2,445	2,455
Coulee Dam <i>part</i>	187	185	185	185	185	185
East Wenatchee	13,190	13,220	13,280	13,350	13,370	13,390
Mansfield	320	320	325	325	325	325
Rock Island	788	790	790	790	790	865
Waterville	1,138	1,140	1,145	1,145	1,155	1,160
Ferry	7,551	7,600	7,650	7,650	7,660	7,710
Unincorporated	6,478	6,520	6,565	6,555	6,560	6,620
Incorporated	1,073	1,080	1,085	1,095	1,100	1,090
Republic	1,073	1,080	1,085	1,095	1,100	1,090
Franklin	78,163	80,500	82,500	84,800	86,600	87,150
Unincorporated	13,491	13,665	13,820	13,160	12,820	12,825
Incorporated	64,672	66,835	68,680	71,640	73,780	74,325
Connell	4,209	5,150	5,320	5,350	5,330	5,405
Kahlotus	193	190	195	195	185	185
Mesa	489	495	495	495	495	495
Pasco	59,781	61,000	62,670	65,600	67,770	68,240
Garfield	2,266	2,250	2,250	2,250	2,240	2,260
Unincorporated	841	835	840	850	845	855
Incorporated	1,425	1,415	1,410	1,400	1,395	1,405
Pomeroy	1,425	1,415	1,410	1,400	1,395	1,405
Grant	89,120	90,100	91,000	91,800	92,900	93,930
Unincorporated	40,134	40,395	40,790	40,956	41,470	41,840
Incorporated	48,986	49,705	50,210	50,844	51,430	52,090
Coulee City	562	565	560	570	565	560
Coulee Dam <i>part</i>	0	0	0	0	0	0
Electric City	968	1,065	995	1,010	1,010	1,010
Ephrata	7,664	7,690	7,750	7,870	7,930	7,985
George	501	690	700	720	720	720
Grand Coulee	988	1,020	1,035	1,045	1,050	1,050
Hartline	151	150	150	155	155	160
Krupp	48	50	50	50	50	50
Mattawa	4,437	4,460	4,495	4,540	4,460	4,535
Moses Lake	20,366	20,640	20,950	21,250	21,600	22,080
Quincy	6,750	6,815	6,945	7,000	7,235	7,270
Royal City	2,140	2,150	2,160	2,190	2,210	2,235
Soap Lake	1,514	1,515	1,520	1,530	1,530	1,520
Warden	2,692	2,690	2,695	2,705	2,710	2,710
Wilson Creek	205	205	205	209+	205	205
Grays Harbor	72,797	72,900	73,150	73,200	73,300	73,110
Unincorporated	28,438	28,555	28,610	28,615	28,635	28,475
Incorporated	44,359	44,345	44,540	44,585	44,665	44,635
Aberdeen	16,896	16,870	16,890	16,860	16,850	16,780
Cosmopolis	1,649	1,645	1,640	1,650	1,645	1,640
Elma	3,107	3,115	3,110	3,115	3,130	3,135
Hoquiam	8,726	8,650	8,655	8,620	8,625	8,575
McCleary	1,653	1,655	1,655	1,655	1,660	1,680
Montesano	3,976	4,010	4,050	4,070	4,075	4,095
Oakville	684	685	690	690	690	685
Ocean Shores	5,569	5,615	5,745	5,815	5,880	5,935
Westport	2,099	2,100	2,105	2,110	2,110	2,110
Island	78,506	78,800	79,350	79,700	80,000	80,600
Unincorporated	53,565	53,700	54,215	54,665	55,090	55,600
Incorporated	24,941	25,100	25,135	25,035	24,910	25,000
Coupeville	1,831	1,855	1,880	1,890	1,895	1,900
Langley	1,035	1,045	1,055	1,065	1,075	1,100
Oak Harbor	22,075	22,200	22,200	22,080	21,940	22,000

Table 4. Populations of Cities, Towns and Counties: April 1, 2010, to April 1, 2015 (continued)

County Municipality	Census 2010	Estimate 2011	Estimate 2012	Estimate 2013	Estimate 2014	Estimate 2015
Jefferson	29,872	30,050	30,175	30,275	30,700	30,880
Unincorporated	20,759	20,870	20,990	21,050	21,345	21,500
Incorporated	9,113	9,180	9,185	9,225	9,355	9,380
Port Townsend	9,113	9,180	9,185	9,225	9,355	9,380
King	1,931,249	1,942,600	1,957,000	1,981,900	2,017,250	2,052,800
Unincorporated	325,000	285,265	255,720	253,100	252,050	253,280
Incorporated	1,606,249	1,657,335	1,701,280	1,728,800	1,765,200	1,799,520
Algona	3,014	3,055	3,070	3,075	3,090	3,105
Auburn <i>part</i>	62,761	63,050	63,390	64,320	65,350	65,950
Beaux Arts Village	299	300	300	290	295	300
Bellevue	122,363	123,400	124,600	132,100	134,400	135,000
Black Diamond	4,153\$	4,160	4,170	4,170	4,180	4,200
Bothell <i>part</i>	17,090	17,150	17,280	17,440	24,610	25,410
Burien	33,313	47,660	47,730	48,030	48,240	48,810
Carnation	1,786	1,780	1,785	1,785	1,790	1,790
Clyde Hill	2,984	2,985	2,980	2,980	2,995	3,020
Covington	17,575	17,640	17,760	18,100	18,480	18,520
Des Moines	29,673	29,680	29,700	29,730	30,030	30,100
Duvall	6,695	6,715	6,900	7,120	7,325	7,345
Enumclaw <i>part</i>	10,669	10,920	11,030	11,100	11,110	11,140
Federal Way	89,306	89,370	89,460	89,720	90,150	90,760
Hunts Point	394	390	390	395	405	410
Issaquah	30,434	30,690	31,150	32,130	32,880	33,330
Kenmore	20,460	20,780	21,020	21,170	21,370	21,500
Kent	92,411	118,200	119,100	120,500	121,400	122,900
Kirkland	48,787	49,020	81,480	81,730	82,590	83,460
Lake Forest Park	12,598	12,610	12,640	12,680	12,750	12,810
Maple Valley	22,684	22,930	23,340	23,910	24,230	24,700
Medina	2,969	2,970	2,990	3,000	3,055	3,095
Mercer Island	22,699	22,710	22,690	22,720	23,310	23,480
Milton <i>part</i>	831	835	835	840	915	1,010
Newcastle	10,380	10,410	10,460	10,640	10,850	10,940
Normandy Park	6,335	6,345	6,350	6,350	6,375	6,420
North Bend	5,731	5,830	5,855	6,020	6,280	6,460
Pacific <i>part</i>	6,514	6,520	6,535	6,675	6,750	6,770
Redmond	54,144	55,150	55,360	55,840	57,700	59,180
Renton	90,927	92,590	93,910	95,540	97,130	98,470
Sammamish	45,780	46,940	47,420	48,060	49,260	49,980
SeaTac	26,909	27,110	27,210	27,310	27,620	27,650
Seattle	608,660	612,100	616,500	626,600	640,500	662,400
Shoreline	53,007	53,200	53,270	53,670	53,990	54,500
Skykomish	198	195	200	195	200	195
Snoqualmie	10,670	10,950	11,320	11,700	12,130	12,850
Tukwila	19,107	19,050	19,080	19,160	19,210	19,300
Woodinville	10,938	10,940	10,960	10,990	11,240	11,240
Yarrow Point	1,001	1,005	1,060	1,015	1,015	1,020
Kitsap	251,133	253,900	254,500	254,000	255,900	258,200
Unincorporated	170,022	171,395	170,620	170,505	171,435	171,940
Incorporated	81,111	82,505	83,880	83,495	84,465	86,260
Bainbridge Island	23,025	23,030	23,090	23,190	23,360	23,390
Bremerton	37,729	38,790	39,650	37,850	38,180	39,410
Port Orchard	11,157\$	11,440	11,780	12,870	13,150	13,510
Poulsbo	9,200	9,245	9,360	9,585	9,775	9,950
Kittitas	40,915	41,300	41,500	41,900	42,100	42,670
Unincorporated	18,063	18,315	18,440	18,785	18,890	19,120
Incorporated	22,852	22,985	23,060	23,115	23,210	23,550
Cle Elum	1,872	1,875	1,865	1,870	1,870	1,865
Ellensburg	18,174	18,250	18,320	18,370	18,440	18,810
Kittitas	1,381	1,430	1,450	1,450	1,475	1,455
Roslyn	893	895	895	895	895	890
South Cle Elum	532	535	530	530	530	530
Klickitat	20,318	20,500	20,600	20,700	20,850	21,000
Unincorporated	13,975	14,120	14,190	14,290	14,385	14,420
Incorporated	6,343	6,380	6,410	6,410	6,465	6,580

Table 4. Populations of Cities, Towns and Counties: April 1, 2010, to April 1, 2015 (continued)

County Municipality	Census 2010	Estimate 2011	Estimate 2012	Estimate 2013	Estimate 2014	Estimate 2015
Klickitat continued						
Bingen	712	720	730	725	730	735
Goldendale	3,407	3,425	3,425	3,410	3,420	3,425
White Salmon	2,224	2,235	2,255	2,275	2,315	2,420
Lewis	75,455	76,000	76,300	76,200	76,300	76,660
Unincorporated	44,892	45,260	45,285	45,270	45,280	45,475
Incorporated	30,563	30,740	31,015	30,930	31,020	31,185
Centralia	16,336	16,440	16,670	16,600	16,640	16,790
Chehalis	7,259	7,310	7,345	7,355	7,370	7,365
Morton	1,126	1,125	1,125	1,120	1,120	1,125
Mossyrock	759	760	760	755	765	750
Napavine	1,766	1,780	1,790	1,795	1,815	1,835
Pe Ell	632	635	635	630	630	640
Toledo	725	725	725	720	725	725
Vader	621	625	625	620	620	615
Winlock	1,339	1,340	1,340	1,335	1,335	1,340
Lincoln	10,570	10,600	10,675	10,675	10,700	10,720
Unincorporated	5,081	5,110	5,185	5,230	5,305	5,305
Incorporated	5,489	5,490	5,490	5,445	5,395	5,415
Almira	284	285	285	285	280	280
Creston	236	235	235	235	230	230
Davenport	1,734	1,735	1,730	1,700	1,685	1,685
Harrington	424	420	420	420	415	420
Odessa	910	910	915	905	900	905
Reardan	571	575	575	575	570	570
Sprague	446	445	445	445	440	445
Wilbur	884	885	885	880	875	880
Mason	60,699	61,100	61,450	61,800	62,000	62,200
Unincorporated	50,865	51,245	51,580	51,825	52,005	52,130
Incorporated	9,834	9,855	9,870	9,975	9,995	10,070
Shelton	9,834	9,855	9,870	9,975	9,995	10,070
Okanogan	41,120	41,200	41,425	41,500	41,700	41,860
Unincorporated	24,780	24,805	25,085	25,110	25,120	25,320
Incorporated	16,340	16,395	16,340	16,390	16,580	16,540
Brewster	2,370	2,365	2,355	2,370	2,380	2,395
Conconully	210	220	215	220	230	230
Coulee Dam <i>part</i>	911	910	915	915	915	910
Elmer City	238	240	235	235	240	285*
Nespelem	236	235	235	235	235	245
Okanogan	2,552	2,585	2,535	2,560	2,595	2,580
Omak	4,845	4,845	4,835	4,830	4,840	4,900
Oroville	1,686	1,690	1,715	1,715	1,700	1,695
Pateros	667	665	665	665	665	525
Riverside	280	280	280	280	290	285
Tonasket	1,032	1,025	1,020	1,020	1,110	1,110
Twisp	919	925	930	940	945	945
Winthrop	394	410	405	405	435	435
Pacific	20,920	20,900	20,970	21,000	21,100	21,210
Unincorporated	14,073	14,070	14,115	14,125	14,225	14,320
Incorporated	6,847	6,830	6,855	6,875	6,875	6,890
Ilwaco	936	935	940	940	945	945
Long Beach	1,392	1,390	1,400	1,410	1,410	1,420
Raymond	2,882	2,870	2,890	2,895	2,890	2,905
South Bend	1,637	1,635	1,625	1,630	1,630	1,620
Pend Oreille	13,001	13,000	13,100	13,150	13,210	13,240
Unincorporated	9,810	9,790	9,890	9,945	9,985	10,030
Incorporated	3,191	3,210	3,210	3,205	3,225	3,210
Cusick	207	210	210	205	205	200
Ione	447	445	445	445	445	440
Metaline	173	175	175	175	185	175
Metaline Falls	238	240	240	240	240	235
Newport	2,126	2,140	2,140	2,140	2,150	2,160

Table 4. Populations of Cities, Towns and Counties: April 1, 2010, to April 1, 2015 (continued)

County Municipality	Census 2010	Estimate 2011	Estimate 2012	Estimate 2013	Estimate 2014	Estimate 2015
Pierce	795,225	802,150	808,200	814,500	821,300	830,120
Unincorporated	366,738	372,110	375,955	378,495	381,970	386,050
Incorporated	428,487	430,040	432,245	436,005	439,330	444,070
Auburn <i>part</i>	7,419	7,655	7,850	8,915	9,280	9,595
Bonney Lake	17,374	17,500	17,730	18,010	18,520	19,490
Buckley	4,354	4,345	4,365	4,370	4,430	4,440
Carbonado	610	610	610	610	610	615
DuPont	8,199	8,430	8,640	8,855	9,175	9,250
Eatonville	2,758	2,775	2,785	2,815	2,840	2,880
Edgewood	9,387	9,405	9,425	9,460	9,525	9,615
Enumclaw <i>part</i>	0	0	0	0	0	0
Fife	9,173	9,220	9,235	9,290	9,405	9,545
Fircrest	6,497	6,500	6,525	6,540	6,555	6,575
Gig Harbor	7,126	7,200	7,340	7,670	7,985	8,555
Lakewood	58,163	58,190	58,260	58,310	58,360	58,400
Milton <i>part</i>	6,137	6,140	6,150	6,345	6,350	6,375
Orting	6,746	6,770	6,790	6,930	7,065	7,290
Pacific <i>part</i>	92	85	85	85	80	70
Puyallup	37,022	37,240	37,620	37,980	38,670	38,950
Roy	793	795	805	805	805	805
Ruston	749	750	755	795	830	905
South Prairie	434	435	435	435	435	435
Steilacoom	5,985	6,000	6,015	6,040	6,060	6,115
Sumner	9,451	9,450	9,470	9,520	9,545	9,660
Tacoma	198,397	198,900	199,600	200,400	200,900	202,300
University Place	31,144	31,170	31,270	31,340	31,420	31,720
Wilkeson	477	475	485	485	485	485
San Juan	15,769	15,900	15,925	16,000	16,100	16,180
Unincorporated	13,607	13,720	13,785	13,815	13,910	13,965
Incorporated	2,162	2,180	2,140	2,185	2,190	2,215
Friday Harbor	2,162	2,180	2,140	2,185	2,190	2,215
Skagit	116,901	117,400	117,950	118,600	119,500	120,620
Unincorporated	48,112	48,255	48,345	48,411	48,720	49,220
Incorporated	68,789	69,145	69,605	70,189	70,780	71,400
Anacortes	15,778	15,860	15,960	16,080	16,190	16,310
Burlington	8,388	8,420	8,435	8,445	8,445	8,485
Concrete	710*	710	715	710	720	730*
Hamilton	301	300	300	304+	305	305
La Conner	891	885	895	890	895	895
Lyman	438	440	440	440	445	445
Mount Vernon	31,743	31,940	32,250	32,710	33,170	33,530
Sedro-Woolley	10,540	10,590	10,610	10,610	10,610	10,700
Skamania	11,066	11,150	11,275	11,300	11,370	11,430
Unincorporated	8,645	8,685	8,755	8,780	8,855	8,895
Incorporated	2,421	2,465	2,520	2,520	2,515	2,535
North Bonneville	956	965	1,000	1,005	1,005	1,005
Stevenson	1,465	1,500	1,520	1,515	1,510	1,530
Snohomish	713,335	717,000	722,900	730,500	741,000	757,600
Unincorporated	302,292	304,435	308,445	312,500	320,335	330,260
Incorporated	411,043	412,565	414,455	418,000	420,665	427,340
Arlington	17,926	17,930	17,970	18,270	18,360	18,490
Bothell <i>part</i>	16,415	16,570	16,720	17,020	17,020	17,230
Brier	6,087	6,100	6,155	6,315	6,345	6,500
Darrington	1,347	1,345	1,345	1,350	1,350	1,350
Edmonds	39,709	39,800	39,800	39,950	39,950	40,490
Everett	103,019	103,100	103,300	104,200	104,900	105,800
Gold Bar	2,075	2,060	2,060	2,080	2,085	2,115
Granite Falls	3,364	3,370	3,380	3,385	3,390	3,390
Index	178	180	180	180	180	160
Lake Stevens	28,069	28,210	28,510	28,960	29,170	29,900
Lynnwood	35,836	35,860	35,900	35,960	36,030	36,420
Marysville	60,020	60,660	61,360	62,100	62,600	64,140
Mill Creek	18,244	18,370	18,450	18,600	18,780	19,760
Monroe	17,304	17,330	17,390	17,510	17,660	17,620
Mountlake Terrace	19,909	19,990	20,090	20,160	20,530	21,090

Table 4. Populations of Cities, Towns and Counties: April 1, 2010, to April 1, 2015 (continued)

County Municipality	Census 2010	Estimate 2011	Estimate 2012	Estimate 2013	Estimate 2014	Estimate 2015
Snohomish <i>continued</i>						
Mukilteo	20,254	20,310	20,360	20,440	20,540	20,900
Snohomish	9,098	9,200	9,215	9,220	9,270	9,385
Stanwood	6,231	6,220	6,300	6,340	6,530	6,585
Sultan	4,651	4,655	4,660	4,660	4,665	4,680
Woodway	1,307	1,305	1,310	1,300	1,310	1,335
Spokane	471,221	472,650	475,600	480,000	484,500	488,310
Unincorporated	136,097	136,713	136,487	137,813	139,904	140,717
Incorporated	335,124	335,937	339,113	342,187	344,596	347,593
Airway Heights	6,114	6,220	7,780	7,935	7,970	8,385
Cheney	10,590	10,790	10,820	11,070	11,310	11,440
Deer Park	3,652	3,675	3,715	3,800	3,870	3,950
Fairfield	612	595	600	615	615	615
Latah	193*	195	195	195	195	195
Liberty Lake	7,591	7,705	7,900	8,190	8,675	8,975
Medical Lake	5,060	4,910	4,920	4,945	4,965	4,945
Millwood	1,786	1,785	1,785	1,790	1,785	1,790
Rockford	470	470	470	470	470	470
Spangle	278	280	280	280	280	280
Spokane	208,916	209,100	210,000	211,300	212,300	213,100
Spokane Valley	89,755	90,110	90,550	91,490	92,050	93,340
Waverly	107*	102*	98*	107*	111*	108*
Stevens	43,531	43,600	43,700	43,800	43,900	44,030
Unincorporated	33,893	33,946	34,035	34,160	34,230	34,300
Incorporated	9,638	9,654	9,665	9,640	9,670	9,730
Chewelah	2,607	2,610	2,620	2,615	2,615	2,650
Colville	4,673	4,690	4,695	4,685	4,690	4,705
Kettle Falls	1,595	1,605	1,600	1,595	1,610	1,615
Marcus	183*	174*	175	175	180	175
Northport	295	295	295	290	290	295
Springdale	285	280	280	280	285	290
Thurston	252,264	254,100	256,800	260,100	264,000	267,410
Unincorporated	135,123	135,830	136,610	137,395	138,160	138,930
Incorporated	117,141	118,270	120,190	122,705	125,840	128,480
Bucoda	562	560	560	560	560	565
Lacey	42,393	42,830	43,600	44,350	45,320	46,020
Olympia	46,478	46,780	47,500	48,480	49,670	51,020
Rainier	1,794	1,825	1,825	1,840	1,850	1,880
Tenino	1,695	1,700	1,705	1,705	1,725	1,730
Tumwater	17,371	17,570	17,900	18,300	18,800	19,100
Yelm	6,848	7,005	7,100	7,470	7,915	8,165
Wahkiakum	3,978	4,000	4,025	4,020	4,010	3,980
Unincorporated	3,446	3,470	3,500	3,520	3,510	3,490
Incorporated	532	530	525	500	500	490
Cathlamet	532	530	525	500	500	490
Walla Walla	58,781	58,800	59,100	59,500	60,150	60,650
Unincorporated	16,750	16,815	16,975	17,150	17,295	16,590
Incorporated	42,031	41,985	42,125	42,350	42,855	44,060
College Place	8,765	8,780	8,845	8,875	9,050	9,110
Prescott	318	320	325	325	325	325
Waitsburg	1,217	1,215	1,215	1,220	1,220	1,235
Walla Walla	31,731	31,670	31,740	31,930	32,260	33,390
Whatcom	201,140	202,100	203,500	205,800	207,600	209,790
Unincorporated	87,065	87,535	87,921	88,276	88,822	89,788
Incorporated	114,075	114,565	115,579	117,524	118,778	120,002
Bellingham	80,885	81,070	81,360	82,310	82,810	83,580
Blaine	4,684	4,705	4,760	4,785	4,865	4,905
Everson	2,483\$	2,495	2,520	2,550	2,570	2,580
Ferndale	11,415	11,530	11,830	12,290	12,710	12,920
Lynden	11,951	12,060	12,340	12,730	12,920	13,090
Nooksack	1,338	1,350	1,370	1,410	1,435	1,460
Sumas	1,319*	1,355*	1,399*	1,449*	1,468*	1,467*

Table 4. Populations of Cities, Towns and Counties: April 1, 2010, to April 1, 2015 (continued)

County Municipality	Census 2010	Estimate 2011	Estimate 2012	Estimate 2013	Estimate 2014	Estimate 2015
Whitman	44,776	44,800	45,950	46,000	46,500	47,250
Unincorporated	5,961	5,974	5,974	6,035	6,065	6,084
Incorporated	38,815	38,826	39,976	39,965	40,435	41,166
Albion	579	555	545	550	555	555
Colfax	2,805	2,805	2,790	2,780	2,765	2,790
Colton	418	425	415	420	420	420
Endicott	289	293#	295	295	300+	296+
Farmington	146	145	145	145	150	150
Garfield	597	600	595	595	595	595
LaCrosse	313	315	315	315	320	320
Lamont	81*	80	80	80	80	80
Malden	203	205	205	205	205	200
Oakesdale	422	425	425	425	425	430
Palouse	998	1,005	1,020	1,020	1,030	1,030
Pullman	29,799	29,820	31,000	30,990	31,420	32,110
Rosalia	550	555	555	555	555	560
St. John	543*	523*	501*	500	505	510
Tekoa	778	775	785	770	775	785
Uniontown	294	300	305	320	335	335
Yakima	243,231	244,700	246,000	247,250	248,800	249,970
Unincorporated	83,755	84,300	84,800	84,910	85,410	85,985
Incorporated	159,476	160,400	161,200	162,340	163,390	163,985
Grandview	10,862	10,920	11,000	11,010	11,170	11,200
Granger	3,246	3,270	3,285	3,315	3,495	3,640
Harrah	630*	630	650	645	645	650
Mabton	2,286	2,290	2,290	2,305	2,310	2,310
Moxee	3,308	3,415	3,505	3,655	3,720	3,810
Naches	795	805	805	805	815	830
Selah	7,147	7,205	7,290	7,340	7,395	7,495
Sunnyside	15,858	16,010	16,130	16,200	16,230	16,280
Tieton	1,191	1,195	1,195	1,235	1,255	1,255
Toppenish	8,949	8,950	8,950	8,950	8,955	8,965
Union Gap	6,047	6,055	6,105	6,110	6,140	6,150
Wapato	4,997	5,025	5,030	5,035	5,040	5,040
Yakima	91,196\$	91,630	91,930	92,620	93,080	93,220
Zillah	2,964	3,000	3,035	3,115	3,140	3,140
Washington	6,724,540	6,767,900	6,817,770	6,882,400	6,968,170	7,061,410
Unincorporated	2,478,323	2,454,633	2,438,547	2,449,701	2,470,761	2,497,039
Incorporated	4,246,217	4,313,267	4,379,223	4,432,699	4,497,409	4,564,371

- Notes:
- The county and municipal populations shown for 2010 are, with a few exceptions, the 2010 federal census PL 94-174 counts. Some 2010 counts may differ from the federal census. See Table 5 for more information.
 - With the exception of corrections to federal census counts, annual estimates in this official series are not revised on the basis of other information that becomes available after the estimate date.

- Symbols:
- * State Certified Special Census
 - # Informal census. A population and housing count that is considered accurate but does not meet all special census certification.
 - + Informal count. A population count that is considered accurate but does not meet special census certification.
 - \$ Adjusted Census 2010 population and housing. See Table 5 for more information.

Table 5. Notes on Census Corrections and the Differences between the 2010 Federal Census Public Law 94-171 Counts and the Official 2010 Population Estimates by the Office of Financial Management

The Office of Financial Management (OFM) is responsible for April 1 population determinations that are used for state revenue allocations to local governments and in selected state programs requiring population as a criterion for funding and/or administration.

Abbreviations: Occ. - Occupied, Vac. - Vacant, HH - Household, GQ - Group Quarters

I. Corrections to 2010 Federal Counts Due to Misallocation of Housing Units and/or Group Quarters

State and local governments in Washington state did not submit any formal challenges to the Census Bureau about their 2010 census counts. The deadline for submitting a challenge to the Count Question Resolution (CQR) program ended June 30, 2013. Thus, there are no federal corrections associated with the 2010 census.

Notes on Census Corrections and the Differences between the 2010 Federal Census Public Law 94-171 Counts and the Official 2010 Population Estimates by the Office of Financial Management

II. Population and Housing Units Added to the Cities Due to Annexations Jan. 2, 2010, through April 1, 2010

<u>Municipality</u>	<u>Federal Census 2010</u>						<u>Change</u>						<u>Adjusted Federal Census</u>					
	<u>Housing Units</u>			<u>Population</u>			<u>Housing Units</u>			<u>Population</u>			<u>Housing Units</u>			<u>Population</u>		
	Total	Occ.	Vac.	HH	GQ	Total	Total	Occ.	Vac.	HH	GQ	Total	Total	Occ.	Vac.	HH	GQ	Total
Black Diamond	1,685	1,546	139	4,151	0	4,151	1	1	0	2	0	2	1,686	1,547	139	4,153	0	4,153
Chelan	2,516	1,602	914	3,821	69	3,890	1	0	1	0	0	0	2,517	1,602	915	3,821	69	3,890
Everson	864	819	45	2,481	0	2,481	1	1	0	2	0	2	865	820	45	2,483	0	2,483
Port Orchard	4,630	4,278	352	10,403	741	11,144	6	5	1	13	0	13	4,636	4,283	353	10,416	741	11,157
Yakima	34,829	33,074	1,755	88,619	2,448	91,067	58	57	1	129	0	129	34,887	33,131	1,756	88,748	2,448	91,196
Total	44,524	41,319	3,205	109,475	3,258	112,733	67	64	3	146	0	146	44,591	41,383	3,208	109,621	3,258	112,879

III. Special City April 1, 2010, Censuses Certified by OFM and Used in Place of Federal Census 2010

<u>Municipality</u>	<u>Federal Census 2010</u>						<u>Special City Census</u>					
	<u>Housing Units</u>			<u>Population</u>			<u>Housing Units</u>			<u>Population</u>		
	Total	Occ.	Vac.	HH	GQ	Total	Total	Occ.	Vac.	HH	GQ	Total
Concrete	358	295	63	705	0	705	376	307	69	710	0	710
Harrah	183	177	6	625	0	625	180	177	3	630	0	630
Lamont	40	33	7	70	0	70	40	36	4	81	0	81
Latah	81	67	14	183	0	183	91	71	20	193	0	193
Marcus	82	76	6	183	0	183	82	75	7	183	0	183
St. John	304	261	43	537	0	537	306	263	43	543	0	543
Sumas	531	482	49	1,306	1	1,307	541	504	37	1,319	0	1,319
Waverly	50	44	6	106	0	106	51	44	7	107	0	107
Total	1,629	1,435	194	3,715	1	3,716	1,667	1,477	190	3,766	0	3,766

Table 5. Notes on Census Corrections and the Differences between the 2010 Federal Census Public Law 94-171 Counts and the Official 2010 Population Estimates by the Office of Financial Management *(continued)*

IV. Summary of Changes to 2010 Federal Census Counts Due to Annexations, Special City Censuses and Federal Corrections

Municipality	Federal Census 2010						Change						Adjusted Federal Census					
	Housing Units			Population			Housing Units			Population			Housing Units			Population		
	Total	Occ.	Vac.	HH	GQ	Total	Total	Occ.	Vac.	HH	GQ	Total	Total	Occ.	Vac.	HH	GQ	Total
Chelan																		
Chelan (A)	2,516	1,602	914	3,821	69	3,890	1	0	1	0	0	0	2,517	1,602	915	3,821	69	3,890
King																		
Black Diamond (A)	1,685	1,546	139	4,151	0	4,151	1	1	0	2	0	2	1,686	1,547	139	4,153	0	4,153
Kitsap																		
Port Orchard (A)	4,630	4,278	352	10,403	741	11,144	6	5	1	13	0	13	4,636	4,283	353	10,416	741	11,157
Skagit																		
Concrete (B)	358	295	63	705	0	705	--	--	--	--	--	--	376	307	69	710	0	710
Spokane																		
Latah (B)	81	67	14	183	0	183	--	--	--	--	--	--	91	71	20	193	0	193
Waverly (B)	50	44	6	106	0	106	--	--	--	--	--	--	51	44	7	107	0	107
Stevens																		
Marcus (B)	82	76	6	183	0	183	--	--	--	--	--	--	82	75	7	183	0	183
Whatcom																		
Everson (A)	864	819	45	2,481	0	2,481	1	1	0	2	0	2	865	820	45	2,483	0	2,483
Sumas (B)	531	482	49	1,306	1	1,307	--	--	--	--	--	--	541	504	37	1,319	0	1,319
Whitman																		
Lamont(B)	40	33	7	70	0	70	--	--	--	--	--	--	40	36	4	81	0	81
St. John(B)	304	261	43	537	0	537	--	--	--	--	--	--	306	263	43	543	0	543
Yakima																		
Harrah (B)	183	177	6	625	0	625	--	--	--	--	--	--	180	177	3	630	0	630
Yakima (A)	34,829	33,074	1,755	88,619	2,448	91,067	58	57	1	129	0	129	34,887	33,131	1,756	88,748	2,448	91,196

- Symbols:
- A Population and housing units added to the cities due to annexations effective from Jan. 2, 2010, and April 1, 2010.
 - B Special city April 1, 2010, censuses used in place of the federal censuses.
 - F Census Bureau corrections to federal counts due to misallocation of population and housing units. Federal corrections to *city* totals affect only the incorporated-unincorporated split. Federal corrections to *county* population and housing units affect state totals.

Table 6. Rank of Cities and Towns by April 1, 2015, Population Size

<u>Municipality</u>	<u>Census 2010</u>	<u>Estimate 2015</u>	<u>Rank by Population Size</u>		<u>Population Change: 2010 to 2015</u>		
			<u>2010</u>	<u>2015</u>	<u>Numeric Change</u>	<u>Rank by Numeric Change</u>	<u>Change Due to Annexation</u>
Seattle	608,660	662,400	1	1	53,740	1	0
Spokane	208,916	213,100	2	2	4,184	16	294
Tacoma	198,397	202,300	3	3	3,903	18	0
Vancouver	161,791	170,400	4	4	8,609	7	592
Bellevue	122,363	135,000	5	5	12,637	5	5,630
Kent	92,411	122,900	7	6	30,489	3	25,458
Everett	103,019	105,800	6	7	2,781	22	6
Renton	90,927	98,470	9	8	7,543	9	826
Spokane Valley	89,755	93,340	10	9	3,585	20	0
Yakima	91,196	93,220	8	10	2,024	30	14
Federal Way	89,306	90,760	11	11	1,454	45	0
Bellingham	80,885	83,580	12	12	2,695	23	102
Kirkland	48,787	83,460	20	13	34,673	2	31,816
Kennewick	73,917	78,290	13	14	4,373	14	0
Auburn	70,180	75,545	14	15	5,365	10	0
Pasco	59,781	68,240	16	16	8,459	8	1,454
Marysville	60,020	64,140	15	17	4,120	17	0
Redmond	54,144	59,180	18	18	5,036	11	149
Lakewood	58,163	58,400	17	19	237	100	0
Shoreline	53,007	54,500	19	20	1,493	44	0
Richland	48,058	53,080	21	21	5,022	12	14
Olympia	46,478	51,020	22	22	4,542	13	612
Sammamish	45,780	49,980	23	23	4,200	15	906
Burien	33,313	48,810	31	24	15,497	4	14,292
Lacey	42,393	46,020	24	25	3,627	19	2
Bothell	33,505	42,640	30	26	9,135	6	6,801
Edmonds	39,709	40,490	25	27	781	58	0
Bremerton	37,729	39,410	26	28	1,681	38	0
Puyallup	37,022	38,950	27	29	1,928	32	178
Longview	36,648	37,130	28	30	482	74	168
Lynnwood	35,836	36,420	29	31	584	66	0
Mount Vernon	31,743	33,530	33	32	1,787	35	0
Walla Walla	31,731	33,390	34	33	1,659	40	562
Issaquah	30,434	33,330	36	34	2,896	21	0
Wenatchee	31,925	33,230	32	35	1,305	49	182
Pullman	29,799	32,110	37	36	2,311	25	1
University Place	31,144	31,720	35	37	576	67	0
Des Moines	29,673	30,100	38	38	427	77	0
Lake Stevens	28,069	29,900	39	39	1,831	34	0
SeaTac	26,909	27,650	40	40	741	61	0
Maple Valley	22,684	24,700	43	41	2,016	31	0
Mercer Island	22,699	23,480	42	42	781	58	0
Bainbridge Island	23,025	23,390	41	43	365	85	0
Moses Lake	20,366	22,080	46	44	1,714	37	169
Oak Harbor	22,075	22,000	44	45	-75	277	32
Kenmore	20,460	21,500	45	46	1,040	55	0
Camas	19,355	21,210	49	47	1,855	33	38
Mountlake Terrace	19,909	21,090	48	48	1,181	51	0
Mukilteo	20,254	20,900	47	49	646	64	0
Mill Creek	18,244	19,760	52	50	1,516	42	0

Table 6. Rank of Cities and Towns by April 1, 2015, Population Size (continued)

<u>Municipality</u>	<u>Census 2010</u>	<u>Estimate 2015</u>	<u>Rank by Population Size</u>		<u>Population Change: 2010 to 2015</u>		
			<u>2010</u>	<u>2015</u>	<u>Numeric Change</u>	<u>Rank by Numeric Change</u>	<u>Change Due to Annexation</u>
Bonney Lake	17,374	19,490	57	51	2,116	29	0
Tukwila	19,107	19,300	50	52	193	110	0
Battle Ground	17,571	19,250	56	53	1,679	39	206
Port Angeles	19,038	19,140	51	54	102	126	0
Tumwater	17,371	19,100	58	55	1,729	36	0
Ellensburg	18,174	18,810	53	56	636	65	142
Covington	17,575	18,520	55	57	945	56	0
Arlington	17,926	18,490	54	58	564	68	42
Monroe	17,304	17,620	59	59	316	92	21
Centralia	16,336	16,790	61	60	454	76	294
Aberdeen	16,896	16,780	60	61	-116	279	0
Anacortes	15,778	16,310	63	62	532	71	0
Sunnyside	15,858	16,280	62	63	422	78	70
Washougal	14,095	15,170	64	64	1,075	53	9
West Richland	11,811	13,960	69	65	2,149	28	0
Port Orchard	11,157	13,510	71	66	2,353	24	943
East Wenatchee	13,190	13,390	65	67	200	108	0
Lynden	11,951	13,090	67	68	1,139	52	38
Ferndale	11,415	12,920	70	69	1,505	43	11
Snoqualmie	10,670	12,850	74	70	2,180	27	0
Lake Forest Park	12,598	12,810	66	71	212	106	0
Kelso	11,925	11,950	68	72	25	174	0
Cheney	10,590	11,440	76	73	850	57	0
Woodinville	10,938	11,240	72	74	302	94	0
Grandview	10,862	11,200	73	75	338	89	3
Enumclaw	10,669	11,140	75	76	471	75	366
Newcastle	10,380	10,940	78	77	560	69	0
Sedro-Woolley	10,540	10,700	77	78	160	113	44
Shelton	9,834	10,070	79	79	236	101	0
Poulsbo	9,200	9,950	82	80	750	60	35
Sumner	9,451	9,660	80	81	209	107	0
Edgewood	9,387	9,615	81	82	228	103	0
Fife	9,173	9,545	83	83	372	83	0
Snohomish	9,098	9,385	85	84	287	97	0
Port Townsend	9,113	9,380	84	85	267	98	0
DuPont	8,199	9,250	90	86	1,051	54	0
College Place	8,765	9,110	87	87	345	88	11
Liberty Lake	7,591	8,975	92	88	1,384	47	0
Toppenish	8,949	8,965	86	89	16	190	0
Hoquiam	8,726	8,575	88	90	-151	281	0
Gig Harbor	7,126	8,555	97	91	1,429	46	4
Burlington	8,388	8,485	89	92	97	128	0
Airway Heights	6,114	8,385	108	93	2,271	26	1,419
Yelm	6,848	8,165	99	94	1,317	48	0
Ephrata	7,664	7,985	91	95	321	91	0
Othello	7,364	7,780	93	96	416	80	0
Selah	7,147	7,495	96	97	348	87	113
Milton	6,968	7,385	98	98	417	79	178
Chehalis	7,259	7,365	94	99	106	124	0
Duvall	6,695	7,345	102	100	650	63	0

Table 6. Rank of Cities and Towns by April 1, 2015, Population Size (continued)

<u>Municipality</u>	<u>Census 2010</u>	<u>Estimate 2015</u>	<u>Rank by Population Size</u>		<u>Population Change: 2010 to 2015</u>		
			<u>2010</u>	<u>2015</u>	<u>Numeric Change</u>	<u>Rank by Numeric Change</u>	<u>Change Due to Annexation</u>
Orting	6,746	7,290	101	101	544	70	0
Quincy	6,750	7,270	100	102	520	72	22
Clarkston	7,229	7,235	95	103	6	210	0
Sequim	6,606	6,915	103	104	309	93	0
Pacific	6,606	6,840	103	105	234	102	0
Stanwood	6,231	6,585	107	106	354	86	0
Fircrest	6,497	6,575	105	107	78	135	0
Brier	6,087	6,500	109	108	413	81	101
North Bend	5,731	6,460	112	109	729	62	98
Normandy Park	6,335	6,420	106	110	85	134	0
Ridgefield	4,763	6,400	119	111	1,637	41	0
Union Gap	6,047	6,150	110	112	103	125	0
Steilacoom	5,985	6,115	111	113	130	119	0
Ocean Shores	5,569	5,935	114	114	366	84	0
Prosser	5,714	5,845	113	115	131	118	2
Woodland	5,509	5,845	115	115	336	90	37
Connell	4,209	5,405	125	117	1,196	50	0
Wapato	4,997	5,040	117	118	43	152	0
Medical Lake	5,060	4,945	116	119	-115	278	0
Blaine	4,684	4,905	120	120	221	104	0
Omak	4,845	4,900	118	121	55	145	0
Colville	4,673	4,705	121	122	32	164	17
Sultan	4,651	4,680	122	123	29	166	0
Mattawa	4,437	4,535	123	124	98	127	0
Buckley	4,354	4,440	124	125	86	132	0
Black Diamond	4,153	4,200	126	126	47	149	0
Montesano	3,976	4,095	127	127	119	123	0
Chelan	3,890	4,045	128	128	155	116	0
Deer Park	3,652	3,950	129	129	298	96	0
Moxee	3,308	3,810	133	130	502	73	90
Granger	3,246	3,640	134	131	394	82	0
Forks	3,532	3,565	130	132	33	163	14
Goldendale	3,407	3,425	131	133	18	186	0
Granite Falls	3,364	3,390	132	134	26	172	0
Benton City	3,038	3,285	137	135	247	99	0
Zillah	2,964	3,140	141	136	176	112	56
Elma	3,107	3,135	135	137	28	167	0
Algona	3,014	3,105	138	138	91	131	0
La Center	2,800	3,100	144	139	300	95	120
Medina	2,969	3,095	140	140	126	120	0
Cashmere	3,063	3,040	136	141	-23	272	12
Clyde Hill	2,984	3,020	139	142	36	159	0
Raymond	2,882	2,905	142	143	23	178	0
Eatonville	2,758	2,880	145	144	122	121	0
Colfax	2,805	2,790	143	145	-15	268	0
Warden	2,692	2,710	146	146	18	186	0
Chewelah	2,607	2,650	147	147	43	152	0
Everson	2,483	2,580	150	148	97	128	5
Okanogan	2,552	2,580	148	148	28	167	54
Dayton	2,526	2,550	149	150	24	176	0

Table 6. Rank of Cities and Towns by April 1, 2015, Population Size (continued)

<u>Municipality</u>	<u>Census 2010</u>	<u>Estimate 2015</u>	<u>Rank by Population Size</u>		<u>Population Change: 2010 to 2015</u>		
			<u>2010</u>	<u>2015</u>	<u>Numeric Change</u>	<u>Rank by Numeric Change</u>	<u>Change Due to Annexation</u>
Kalama	2,344	2,500	153	151	156	114	10
Bridgeport	2,409	2,455	151	152	46	151	0
White Salmon	2,224	2,420	155	153	196	109	101
Brewster	2,370	2,395	152	154	25	174	0
Mabton	2,286	2,310	154	155	24	176	0
Royal City	2,140	2,235	157	156	95	130	0
Friday Harbor	2,162	2,215	156	157	53	147	0
Castle Rock	1,982	2,175	161	158	193	110	123
Newport	2,126	2,160	158	159	34	162	0
Gold Bar	2,075	2,115	160	160	40	158	0
Westport	2,099	2,110	159	161	11	194	0
Leavenworth	1,965	1,980	162	162	15	192	0
Coupeville	1,831	1,900	164	163	69	139	0
Rainier	1,794	1,880	165	164	86	132	0
Cle Elum	1,872	1,865	163	165	-7	261	0
Napavine	1,766	1,835	168	166	69	139	0
Millwood	1,786	1,790	166	167	4	217	0
Carnation	1,786	1,790	166	167	4	217	0
Tenino	1,695	1,730	170	169	35	160	0
Oroville	1,686	1,695	171	170	9	196	5
Davenport	1,734	1,685	169	171	-49	276	0
McCleary	1,653	1,680	173	172	27	171	0
Ritzville	1,673	1,670	172	173	-3	247	0
Cosmopolis	1,649	1,640	174	174	-9	266	0
South Bend	1,637	1,620	175	175	-17	269	0
Yacolt	1,566	1,620	177	175	54	146	4
Kettle Falls	1,595	1,615	176	177	20	181	9
Stevenson	1,465	1,530	179	178	65	141	0
Soap Lake	1,514	1,520	178	179	6	210	0
Sumas	1,319	1,467	186	180	148	117	0
Nooksack	1,338	1,460	185	181	122	121	0
Kittitas	1,381	1,455	182	182	74	138	0
Long Beach	1,392	1,420	181	183	28	167	2
Pomeroy	1,425	1,405	180	184	-20	271	0
Darrington	1,347	1,350	183	185	3	222	0
Winlock	1,339	1,340	184	186	1	230	0
Woodway	1,307	1,335	187	187	28	167	0
Asotin	1,251	1,260	188	188	9	196	0
Tieton	1,191	1,255	190	189	64	143	1
Waitsburg	1,217	1,235	189	190	18	186	0
Waterville	1,138	1,160	191	191	22	180	0
Entiat	1,112	1,155	193	192	43	152	0
Morton	1,126	1,125	192	193	-1	240	0
Tonasket	1,032	1,110	197	194	78	135	110
Langley	1,035	1,100	196	195	65	141	0
Coulee Dam	1,098	1,095	194	196	-3	247	0
Republic	1,073	1,090	195	197	17	189	0
Grand Coulee	988	1,050	200	198	62	144	32
Palouse	998	1,030	199	199	32	164	0
Yarrow Point	1,001	1,020	198	200	19	185	0

Table 6. Rank of Cities and Towns by April 1, 2015, Population Size (continued)

<u>Municipality</u>	<u>Census 2010</u>	<u>Estimate 2015</u>	<u>Rank by Population Size</u>		<u>Population Change: 2010 to 2015</u>		
			<u>2010</u>	<u>2015</u>	<u>Numeric Change</u>	<u>Rank by Numeric Change</u>	<u>Change Due to Annexation</u>
Electric City	968	1,010	201	201	42	155	12
North Bonneville	956	1,005	202	202	49	148	0
Twisp	919	945	204	203	26	172	0
Ilwaco	936	945	203	203	9	196	0
Odessa	910	905	205	205	-5	258	0
Ruston	749	905	214	205	156	114	0
La Conner	891	895	207	207	4	217	0
Roslyn	893	890	206	208	-3	247	0
Wilbur	884	880	208	209	-4	254	0
Rock Island	788	865	211	210	77	137	68
Naches	795	830	209	211	35	160	0
Roy	793	805	210	212	12	193	0
Tekoa	778	785	212	213	7	205	0
Mossyrock	759	750	213	214	-9	266	0
Bingen	712	735	216	215	23	178	0
Concrete	710	730	217	216	20	181	0
Toledo	725	725	215	217	0	236	2
George	501	720	235	218	219	105	0
Oakville	684	685	218	219	1	230	0
Harrah	630	650	221	220	20	181	0
Pe Ell	632	640	220	221	8	202	0
Vader	621	615	222	222	-6	259	0
Fairfield	612	615	223	222	3	222	0
Carbonado	610	615	224	222	5	213	0
Garfield	597	595	225	225	-2	244	0
Rear dan	571	570	227	226	-1	240	0
Bucoda	562	565	229	227	3	222	0
Coulee City	562	560	229	228	-2	244	0
Lind	564	560	228	228	-4	254	0
Rosalia	550	560	231	228	10	195	0
Albion	579	555	226	231	-24	273	0
South Cle Elum	532	530	233	232	-2	244	0
Pateros	667	525	219	233	-142	280	0
St. John	543	510	232	234	-33	274	2
Mesa	489	495	236	235	6	210	0
Cathlamet	532	490	233	236	-42	275	0
Wilkeson	477	485	237	237	8	202	0
Rockford	470	470	238	238	0	236	0
Sprague	446	445	240	239	-1	240	0
Lyman	438	445	241	239	7	205	0
Ione	447	440	239	241	-7	261	2
South Prairie	434	435	242	242	1	230	0
Winthrop	394	435	246	242	41	156	0
Oakesdale	422	430	244	244	8	202	0
Harrington	424	420	243	245	-4	254	0
Colton	418	420	245	245	2	225	0
Hunts Point	394	410	246	247	16	190	0
Uniontown	294	335	254	248	41	156	0
Mansfield	320	325	248	249	5	213	0
Prescott	318	325	249	249	7	205	0

Table 6. Rank of Cities and Towns by April 1, 2015, Population Size (continued)

<u>Municipality</u>	<u>Census 2010</u>	<u>Estimate 2015</u>	<u>Rank by Population Size</u>		<u>Population Change: 2010 to 2015</u>		
			<u>2010</u>	<u>2015</u>	<u>Numeric Change</u>	<u>Rank by Numeric Change</u>	<u>Change Due to Annexation</u>
LaCrosse	313	320	250	251	7	205	0
Hamilton	301	305	251	252	4	217	0
Beaux Arts Village	299	300	252	253	1	230	0
Endicott	289	296	255	254	7	205	0
Northport	295	295	253	255	0	236	0
Springdale	285	290	256	256	5	213	0
Riverside	280	285	258	257	5	213	0
Elmer City	238	285	260	257	47	149	0
Almira	284	280	257	259	-4	254	0
Spangle	278	280	259	259	2	225	0
Nespelem	236	245	262	261	9	196	0
Metaline Falls	238	235	260	262	-3	247	0
Conconully	210	230	264	263	20	181	0
Creston	236	230	262	263	-6	259	0
Washtucna	208	205	265	265	-3	247	0
Wilson Creek	205	205	267	265	0	236	0
Cusick	207	200	266	267	-7	261	0
Malden	203	200	268	267	-3	247	0
Latah	193	195	270	269	2	225	0
Skykomish	198	195	269	269	-3	247	0
Kahlotus	193	185	270	271	-8	264	0
Marcus	183	175	272	272	-8	264	0
Metaline	173	175	274	272	2	225	0
Index	178	160	273	274	-18	270	0
Hartline	151	160	275	274	9	196	0
Farmington	146	150	276	276	4	217	0
Starbuck	129	130	277	277	1	230	0
Hatton	101	110	279	278	9	196	0
Waverly	107	108	278	279	1	230	0
Lamont	81	80	280	280	-1	240	0
Krupp	48	50	281	281	2	225	0

- Notes:
- Part cities combined for ranking purposes.
 - Negative annexed populations mean the city/town either de-annexed area or had a boundary line adjustment with either an adjoining city/town or its county.
 - With few exceptions, year 2010 data are federal census Public Law 94-171 data. See Table 5 for more information.

Table 7. Alphabetical Listing of Cities and Towns with Population for April 1, 2015

<u>Municipality</u>	<u>County</u>	<u>Population</u>	<u>Municipality</u>	<u>County</u>	<u>Population</u>
Aberdeen	Grays Harbor	16,780	Connell	Franklin	5,405
Airway Heights	Spokane	8,385	Cosmopolis	Grays Harbor	1,640
Albion	Whitman	555	Coulee City	Grant	560
Algona	King	3,105	Coulee Dam <i>part</i>	Douglas	185
Almira	Lincoln	280	Coulee Dam <i>part</i>	Grant	0
Anacortes	Skagit	16,310	Coulee Dam <i>part</i>	Okanogan	910
Arlington	Snohomish	18,490	Coupeville	Island	1,900
Asotin	Asotin	1,260	Covington	King	18,520
Auburn <i>part</i>	King	65,950	Creston	Lincoln	230
Auburn <i>part</i>	Pierce	9,595	Cusick	Pend Oreille	200
Bainbridge Island	Kitsap	23,390	Darrington	Snohomish	1,350
Battle Ground	Clark	19,250	Davenport	Lincoln	1,685
Beaux Arts Village	King	300	Dayton	Columbia	2,550
Bellevue	King	135,000	Deer Park	Spokane	3,950
Bellingham	Whatcom	83,580	Des Moines	King	30,100
Benton City	Benton	3,285	DuPont	Pierce	9,250
Bingen	Klickitat	735	Duvall	King	7,345
Black Diamond	King	4,200	East Wenatchee	Douglas	13,390
Blaine	Whatcom	4,905	Eatonville	Pierce	2,880
Bonney Lake	Pierce	19,490	Edgewood	Pierce	9,615
Bothell <i>part</i>	King	25,410	Edmonds	Snohomish	40,490
Bothell <i>part</i>	Snohomish	17,230	Electric City	Grant	1,010
Bremerton	Kitsap	39,410	Ellensburg	Kittitas	18,810
Brewster	Okanogan	2,395	Elma	Grays Harbor	3,135
Bridgeport	Douglas	2,455	Elmer City	Okanogan	285 *
Brier	Snohomish	6,500	Endicott	Whitman	296 +
Buckley	Pierce	4,440	Entiat	Chelan	1,155
Bucoda	Thurston	565	Enumclaw <i>part</i>	King	11,140
Burien	King	48,810	Enumclaw <i>part</i>	Pierce	0
Burlington	Skagit	8,485	Ephrata	Grant	7,985
Camas	Clark	21,210	Everett	Snohomish	105,800
Carbonado	Pierce	615	Everson	Whatcom	2,580
Carnation	King	1,790	Fairfield	Spokane	615
Cashmere	Chelan	3,040	Farmington	Whitman	150
Castle Rock	Cowlitz	2,175	Federal Way	King	90,760
Cathlamet	Wahkiakum	490	Ferndale	Whatcom	12,920
Centralia	Lewis	16,790	Fife	Pierce	9,545
Chehalis	Lewis	7,365	Fircrest	Pierce	6,575
Chelan	Chelan	4,045	Forks	Clallam	3,565
Cheney	Spokane	11,440	Friday Harbor	San Juan	2,215
Chewelah	Stevens	2,650	Garfield	Whitman	595
Clarkston	Asotin	7,235	George	Grant	720
Cle Elum	Kittitas	1,865	Gig Harbor	Pierce	8,555
Clyde Hill	King	3,020	Gold Bar	Snohomish	2,115
Colfax	Whitman	2,790	Goldendale	Klickitat	3,425
College Place	Walla Walla	9,110	Grand Coulee	Grant	1,050
Colton	Whitman	420	Grandview	Yakima	11,200
Colville	Stevens	4,705	Granger	Yakima	3,640
Conconully	Okanogan	230	Granite Falls	Snohomish	3,390
Concrete	Skagit	730 *	Hamilton	Skagit	305

Table 7. Alphabetical Listing of Cities and Towns with Population for April 1, 2015 (continued)

<u>Municipality</u>	<u>County</u>	<u>Population</u>	<u>Municipality</u>	<u>County</u>	<u>Population</u>
Harrah	Yakima	650	Metaline	Pend Oreille	175
Harrington	Lincoln	420	Metaline Falls	Pend Oreille	235
Hartline	Grant	160	Mill Creek	Snohomish	19,760
Hatton	Adams	110	Millwood	Spokane	1,790
Hoquiam	Grays Harbor	8,575	Milton <i>part</i>	King	1,010
Hunts Point	King	410	Milton <i>part</i>	Pierce	6,375
Ilwaco	Pacific	945	Monroe	Snohomish	17,620
Index	Snohomish	160	Montesano	Grays Harbor	4,095
lone	Pend Oreille	440	Morton	Lewis	1,125
Issaquah	King	33,330	Moses Lake	Grant	22,080
Kahlotus	Franklin	185	Mossyrock	Lewis	750
Kalama	Cowlitz	2,500	Mount Vernon	Skagit	33,530
Kelso	Cowlitz	11,950	Mountlake Terrace	Snohomish	21,090
Kenmore	King	21,500	Moxee	Yakima	3,810
Kennewick	Benton	78,290	Mukilteo	Snohomish	20,900
Kent	King	122,900	Naches	Yakima	830
Kettle Falls	Stevens	1,615	Napavine	Lewis	1,835
Kirkland	King	83,460	Nespelem	Okanogan	245
Kittitas	Kittitas	1,455	Newcastle	King	10,940
Krupp	Grant	50	Newport	Pend Oreille	2,160
La Center	Clark	3,100	Nooksack	Whatcom	1,460
La Conner	Skagit	895	Normandy Park	King	6,420
Lacey	Thurston	46,020	North Bend	King	6,460
LaCrosse	Whitman	320	North Bonneville	Skamania	1,005
Lake Forest Park	King	12,810	Northport	Stevens	295
Lake Stevens	Snohomish	29,900	Oak Harbor	Island	22,000
Lakewood	Pierce	58,400	Oakesdale	Whitman	430
Lamont	Whitman	80	Oakville	Grays Harbor	685
Langley	Island	1,100	Ocean Shores	Grays Harbor	5,935
Latah	Spokane	195	Odessa	Lincoln	905
Leavenworth	Chelan	1,980	Okanogan	Okanogan	2,580
Liberty Lake	Spokane	8,975	Olympia	Thurston	51,020
Lind	Adams	560	Omak	Okanogan	4,900
Long Beach	Pacific	1,420	Oroville	Okanogan	1,695
Longview	Cowlitz	37,130	Orting	Pierce	7,290
Lyman	Skagit	445	Othello	Adams	7,780
Lynden	Whatcom	13,090	Pacific <i>part</i>	King	6,770
Lynnwood	Snohomish	36,420	Pacific <i>part</i>	Pierce	70
Mabton	Yakima	2,310	Palouse	Whitman	1,030
Malden	Whitman	200	Pasco	Franklin	68,240
Mansfield	Douglas	325	Pateros	Okanogan	525
Maple Valley	King	24,700	Pe Ell	Lewis	640
Marcus	Stevens	175	Pomeroy	Garfield	1,405
Marysville	Snohomish	64,140	Port Angeles	Clallam	19,140
Mattawa	Grant	4,535	Port Orchard	Kitsap	13,510
McCleary	Grays Harbor	1,680	Port Townsend	Jefferson	9,380
Medical Lake	Spokane	4,945	Poulsbo	Kitsap	9,950
Medina	King	3,095	Prescott	Walla Walla	325
Mercer Island	King	23,480	Prosser	Benton	5,845
Mesa	Franklin	495	Pullman	Whitman	32,110

Table 7. Alphabetical Listing of Cities and Towns with Population for April 1, 2015 (continued)

<u>Municipality</u>	<u>County</u>	<u>Population</u>	<u>Municipality</u>	<u>County</u>	<u>Population</u>
Puyallup	Pierce	38,950	Tenino	Thurston	1,730
Quincy	Grant	7,270	Tieton	Yakima	1,255
Rainier	Thurston	1,880	Toledo	Lewis	725
Raymond	Pacific	2,905	Tonasket	Okanogan	1,110
Reardan	Lincoln	570	Toppenish	Yakima	8,965
Redmond	King	59,180	Tukwila	King	19,300
Renton	King	98,470	Tumwater	Thurston	19,100
Republic	Ferry	1,090	Twisp	Okanogan	945
Richland	Benton	53,080	Union Gap	Yakima	6,150
Ridgefield	Clark	6,400	Uniontown	Whitman	335
Ritzville	Adams	1,670	University Place	Pierce	31,720
Riverside	Okanogan	285	Vader	Lewis	615
Rock Island	Douglas	865	Vancouver	Clark	170,400
Rockford	Spokane	470	Waitsburg	Walla Walla	1,235
Rosalia	Whitman	560	Walla Walla	Walla Walla	33,390
Roslyn	Kittitas	890	Wapato	Yakima	5,040
Roy	Pierce	805	Warden	Grant	2,710
Royal City	Grant	2,235	Washougal	Clark	15,170
Ruston	Pierce	905	Washtucna	Adams	205
Sammamish	King	49,980	Waterville	Douglas	1,160
SeaTac	King	27,650	Waverly	Spokane	108 *
Seattle	King	662,400	Wenatchee	Chelan	33,230
Sedro-Woolley	Skagit	10,700	West Richland	Benton	13,960
Selah	Yakima	7,495	Westport	Grays Harbor	2,110
Sequim	Clallam	6,915	White Salmon	Klickitat	2,420
Shelton	Mason	10,070	Wilbur	Lincoln	880
Shoreline	King	54,500	Wilkeson	Pierce	485
Skykomish	King	195	Wilson Creek	Grant	205
Snohomish	Snohomish	9,385	Winlock	Lewis	1,340
Snoqualmie	King	12,850	Winthrop	Okanogan	435
Soap Lake	Grant	1,520	Woodinville	King	11,240
South Bend	Pacific	1,620	Woodland (part)	Clark	85
South Cle Elum	Kittitas	530	Woodland (part)	Cowlitz	5,760
South Prairie	Pierce	435	Woodway	Snohomish	1,335
Spangle	Spokane	280	Yacolt	Clark	1,620
Spokane	Spokane	213,100	Yakima	Yakima	93,220
Spokane Valley	Spokane	93,340	Yarrow Point	King	1,020
Sprague	Lincoln	445	Yelm	Thurston	8,165
Springdale	Stevens	290	Zillah	Yakima	3,140
St. John	Whitman	510			
Stanwood	Snohomish	6,585			
Starbuck	Columbia	130			
Steilacoom	Pierce	6,115			
Stevenson	Skamania	1,530			
Sultan	Snohomish	4,680			
Sumas	Whatcom	1,467 *			
Sumner	Pierce	9,660			
Sunnyside	Yakima	16,280			
Tacoma	Pierce	202,300			
Tekoa	Whitman	785			

Symbols: * State certified special census: a population and housing count that meets all special census certification requirements.
 # Informal census: a population and housing count that is considered accurate but does not meet all special census certification requirements.
 + Informal count: a population count that is considered accurate but does not meet all special census certification requirements.

Table 8. Housing Units by Structure Type for Cities, Towns and Counties – April 1, 2010, and April 1, 2015

County Municipality	April 1, 2010, Structure Type				Estimated April 1, 2015, Structure Type			
	Total	1 Unit	2+ Units	MH/TR/Spec	Total	1 Unit	2+ Units	MH/TR/Spec
Adams	6,242	3,848	836	1,558	6,475	4,011	860	1,604
Unincorporated	2,713	1,306	114	1,293	2,813	1,358	117	1,338
Incorporated	3,529	2,542	722	265	3,662	2,653	743	266
Hatton	40	18	0	22	43	16	2	25
Lind	276	190	43	43	272	186	43	43
Othello	2,185	1,564	547	74	2,323	1,681	566	76
Ritzville	902	685	132	85	899	685	132	82
Washtucna	126	85	0	41	125	85	0	40
Asotin	9,872	6,900	1,614	1,358	10,007	6,980	1,622	1,405
Unincorporated	5,924	4,185	577	1,162	6,053	4,270	581	1,202
Incorporated	3,948	2,715	1,037	196	3,954	2,710	1,041	203
Asotin	537	393	86	58	542	396	86	60
Clarkston	3,411	2,322	951	138	3,412	2,314	955	143
Benton	68,618	45,121	14,870	8,627	74,441	49,045	16,602	8,794
Unincorporated	11,646	6,724	282	4,640	12,242	7,242	282	4,718
Incorporated	56,972	38,397	14,588	3,987	62,199	41,803	16,320	4,076
Benton City	1,162	844	90	228	1,255	910	90	255
Kennewick	28,507	17,621	8,781	2,105	30,256	19,022	9,233	2,001
Prosser	2,129	1,506	398	225	2,166	1,528	412	226
Richland	20,876	14,992	5,152	732	23,394	16,331	6,298	765
West Richland	4,298	3,434	167	697	5,128	4,012	287	829
Chelan	35,465	24,668	6,267	4,530	36,933	25,704	6,650	4,579
Unincorporated	16,858	12,502	721	3,635	17,562	13,121	735	3,706
Incorporated	18,607	12,166	5,546	895	19,371	12,583	5,915	873
Cashmere	1,179	785	319	75	1,175	796	318	61
Chelan	2,517	1,664	754	99	2,617	1,741	784	92
Entiat	495	246	41	208	521	279	41	201
Leavenworth	1,241	763	478	0	1,250	771	479	0
Wenatchee	13,175	8,708	3,954	513	13,808	8,996	4,293	519
Clallam	35,582	24,954	4,133	6,495	36,444	25,619	4,254	6,571
Unincorporated	21,169	15,476	576	5,117	21,756	15,951	586	5,219
Incorporated	14,413	9,478	3,557	1,378	14,688	9,668	3,668	1,352
Forks	1,374	672	217	485	1,389	684	215	490
Port Angeles	9,272	6,770	2,076	426	9,359	6,868	2,106	385
Sequim	3,767	2,036	1,264	467	3,940	2,116	1,347	477
Clark	167,413	119,120	38,170	10,123	174,740	124,474	39,877	10,389
Unincorporated	75,498	60,870	6,967	7,661	78,267	63,455	6,997	7,815
Incorporated	91,915	58,250	31,203	2,462	96,473	61,019	32,880	2,574
Battle Ground	5,952	4,884	829	239	6,506	5,243	1,008	255
Camas	7,072	6,238	796	38	7,647	6,751	861	35
La Center	981	854	68	59	1,086	943	69	74
Ridgefield	1,695	1,581	63	51	2,248	2,128	63	57
Vancouver	70,005	39,841	28,502	1,662	72,437	40,756	29,932	1,749
Washougal	5,673	4,416	928	329	5,997	4,746	930	321
Woodland <i>part</i>	53	15	0	38	53	15	0	38
Yacolt	484	421	17	46	499	437	17	45
Columbia	2,136	1,598	171	367	2,181	1,626	177	378
Unincorporated	845	605	6	234	877	632	6	239
Incorporated	1,291	993	165	133	1,304	994	171	139
Dayton	1,200	933	165	102	1,213	934	171	108
Starbuck	91	60	0	31	91	60	0	31

Table 8. Housing Units by Structure Type for Cities, Towns and Counties – April 1, 2010, and April 1, 2015
(continued)

County Municipality	April 1, 2010, Structure Type				Estimated April 1, 2015, Structure Type			
	Total	1 Unit	2+ Units	MH/TR/Spec	Total	1 Unit	2+ Units	MH/TR/Spec
Cowlitz	43,450	30,050	7,841	5,559	44,209	30,644	7,893	5,672
Unincorporated	17,943	13,264	634	4,045	18,269	13,512	632	4,125
Incorporated	25,507	16,786	7,207	1,514	25,940	17,132	7,261	1,547
Castle Rock	863	582	171	110	940	658	171	111
Kalama	1,070	673	211	186	1,131	730	211	190
Kelso	5,139	3,414	1,416	309	5,144	3,420	1,417	307
Longview	16,380	10,856	4,863	661	16,547	10,982	4,879	686
Woodland <i>part</i>	2,055	1,261	546	248	2,178	1,342	583	253
Douglas	16,004	10,473	2,313	3,218	16,594	10,990	2,342	3,262
Unincorporated	8,962	6,116	518	2,328	9,435	6,559	523	2,353
Incorporated	7,042	4,357	1,795	890	7,159	4,431	1,819	909
Bridgeport	745	305	108	332	763	312	118	333
Coulee Dam <i>part</i>	94	94	0	0	94	94	0	0
East Wenatchee	5,275	3,335	1,634	306	5,330	3,377	1,648	305
Mansfield	169	112	23	34	172	114	23	35
Rock Island	277	149	4	124	309	163	4	142
Waterville	482	362	26	94	491	371	26	94
Ferry	4,403	3,002	180	1,221	4,498	3,064	172	1,262
Unincorporated	3,867	2,727	61	1,079	3,956	2,788	53	1,115
Incorporated	536	275	119	142	542	276	119	147
Republic	536	275	119	142	542	276	119	147
Franklin	24,423	16,952	4,157	3,314	26,932	18,980	4,641	3,311
Unincorporated	4,477	2,913	117	1,447	4,227	2,670	117	1,440
Incorporated	19,946	14,039	4,040	1,867	22,705	16,310	4,524	1,871
Connell	922	468	212	242	966	509	216	241
Kahlotus	114	22	4	88	109	22	4	83
Mesa	128	55	0	73	129	55	0	74
Pasco	18,782	13,494	3,824	1,464	21,501	15,724	4,304	1,473
Garfield	1,233	911	60	262	1,239	920	60	259
Unincorporated	510	378	3	129	520	388	3	129
Incorporated	723	533	57	133	719	532	57	130
Pomeroy	723	533	57	133	719	532	57	130
Grant	35,083	19,724	4,765	10,594	36,782	20,666	5,092	11,024
Unincorporated	16,687	8,396	993	7,298	17,255	8,710	940	7,605
Incorporated	18,396	11,328	3,772	3,296	19,527	11,956	4,152	3,419
Coulee City	331	211	45	75	330	211	45	74
Coulee Dam <i>part</i>	0	0	0	0	0	0	0	0
Electric City	524	393	29	102	533	409	29	95
Ephrata	3,086	2,167	587	332	3,201	2,245	616	340
George	168	49	9	110	223	49	60	114
Grand Coulee	554	340	88	126	579	349	92	138
Hartline	87	75	0	12	88	76	0	12
Krupp	28	23	0	5	28	23	0	5
Mattawa	843	172	176	495	861	178	180	503
Moses Lake	8,365	5,538	1,859	968	9,093	5,930	2,098	1,065
Quincy	2,020	1,237	457	326	2,173	1,331	514	328
Royal City	494	173	154	167	516	195	154	167
Soap Lake	977	507	223	247	981	515	219	247
Warden	803	359	145	299	805	361	145	299
Wilson Creek	116	84	0	32	116	84	0	32
Grays Harbor	35,166	24,955	4,867	5,344	35,763	25,497	4,858	5,408
Unincorporated	12,816	8,749	293	3,774	13,088	9,002	293	3,793
Incorporated	22,350	16,206	4,574	1,570	22,675	16,495	4,565	1,615

Table 8. Housing Units by Structure Type for Cities, Towns and Counties – April 1, 2010, and April 1, 2015
(continued)

County Municipality	April 1, 2010, Structure Type				Estimated April 1, 2015, Structure Type			
	Total	1 Unit	2+ Units	MH/TR/Spec	Total	1 Unit	2+ Units	MH/TR/Spec
Grays Harbor <i>continued</i>								
Aberdeen	7,338	4,922	2,073	343	7,315	4,892	2,073	350
Cosmopolis	714	608	42	64	717	612	42	63
Elma	1,307	871	302	134	1,326	873	314	139
Hoquiam	3,938	2,871	917	150	3,881	2,852	880	149
McCleary	759	645	96	18	773	657	96	20
Montesano	1,684	1,263	339	82	1,723	1,299	339	85
Oakville	291	213	0	78	293	214	0	79
Ocean Shores	4,758	3,785	432	541	5,066	4,062	436	568
Westport	1,561	1,028	373	160	1,581	1,034	385	162
Island	40,234	31,130	4,461	4,643	41,180	31,971	4,515	4,694
Unincorporated	29,070	24,401	786	3,883	29,774	24,971	820	3,983
Incorporated	11,164	6,729	3,675	760	11,406	7,000	3,695	711
Coupeville	933	624	193	116	972	655	194	123
Langley	678	473	203	2	718	507	209	2
Oak Harbor	9,553	5,632	3,279	642	9,716	5,838	3,292	586
Jefferson	17,767	13,302	1,371	3,094	18,256	13,695	1,411	3,150
Unincorporated	12,574	9,378	365	2,831	12,919	9,672	365	2,882
Incorporated	5,193	3,924	1,006	263	5,337	4,023	1,046	268
Port Townsend	5,193	3,924	1,006	263	5,337	4,023	1,046	268
King	851,261	494,228	338,645	18,388	893,275	506,079	369,051	18,145
Unincorporated	125,920	102,845	16,407	6,668	95,241	80,703	8,646	5,892
Incorporated	725,341	391,383	322,238	11,720	798,034	425,376	360,405	12,253
Algona	1,018	796	40	182	1,042	816	43	183
Auburn <i>part</i>	24,688	13,445	8,610	2,633	25,576	14,288	8,651	2,637
Beaux Arts Village	118	118	0	0	119	117	2	0
Bellevue	55,551	30,207	25,338	6	59,041	32,429	26,605	7
Black Diamond	1,686	1,439	46	201	1,698	1,456	47	195
Bothell <i>part</i>	7,553	3,300	3,222	1,031	10,952	5,220	4,700	1,032
Burien	14,322	8,613	5,701	8	20,214	12,481	7,663	70
Carnation	665	559	60	46	664	562	60	42
Clyde Hill	1,099	1,097	2	0	1,099	1,096	3	0
Covington	6,081	5,758	249	74	6,374	6,047	253	74
Des Moines	12,588	7,545	4,716	327	12,687	7,577	4,790	320
Duvall	2,315	1,973	154	188	2,530	2,185	156	189
Enumclaw <i>part</i>	4,683	2,926	1,271	486	4,864	3,117	1,284	463
Federal Way	35,444	19,851	14,276	1,317	35,752	20,116	14,363	1,273
Hunts Point	181	181	0	0	183	183	0	0
Issaquah	13,914	7,231	6,683	0	15,082	7,683	7,398	1
Kenmore	8,569	6,024	2,254	291	8,872	6,311	2,271	290
Kent	36,424	17,966	17,234	1,224	46,693	25,935	18,929	1,829
Kirkland	24,345	11,887	12,403	55	37,765	21,257	16,422	86
Lake Forest Park	5,268	4,478	785	5	5,329	4,525	799	5
Maple Valley	7,997	6,962	481	554	8,625	7,592	481	552
Medina	1,162	1,162	0	0	1,198	1,198	0	0
Mercer Island	9,930	7,368	2,562	0	10,185	7,358	2,827	0
Milton <i>part</i>	357	239	0	118	480	239	116	125
Newcastle	4,227	3,104	1,106	17	4,429	3,205	1,212	12
Normandy Park	2,838	2,253	582	3	2,867	2,279	585	3
North Bend	2,348	1,553	625	170	2,608	1,798	628	182
Pacific <i>part</i>	2,377	1,373	835	169	2,452	1,450	837	165
Redmond	24,177	11,948	11,880	349	26,141	12,572	13,229	340
Renton	38,930	20,883	17,094	953	41,285	22,229	18,075	981
Sammamish	15,736	14,598	940	198	16,959	15,782	983	194

Table 8. Housing Units by Structure Type for Cities, Towns and Counties – April 1, 2010, and April 1, 2015
(continued)

County Municipality	April 1, 2010, Structure Type				Estimated April 1, 2015, Structure Type			
	Total	1 Unit	2+ Units	MH/TR/Spec	Total	1 Unit	2+ Units	MH/TR/Spec
King <i>continued</i>								
SeaTac	10,360	5,606	4,202	552	10,505	5,605	4,357	543
Seattle	308,516	142,407	165,971	138	332,694	143,426	189,127	141
Shoreline	22,787	16,290	6,422	75	23,330	16,358	6,898	74
Skykomish	168	153	2	13	164	149	2	13
Snoqualmie	3,761	3,217	528	16	4,475	3,828	647	0
Tukwila	7,755	3,526	4,007	222	7,779	3,550	4,003	226
Woodinville	4,996	2,940	1,957	99	4,910	2,946	1,958	6
Yarrow Point	407	407	0	0	412	411	1	0
Kitsap	107,367	75,611	20,797	10,959	109,502	77,525	21,084	10,893
Unincorporated	70,759	52,145	8,717	9,897	71,419	52,945	8,712	9,762
Incorporated	36,608	23,466	12,080	1,062	38,083	24,580	12,372	1,131
Bainbridge Island	10,584	8,572	1,610	402	10,754	8,693	1,670	391
Bremerton	17,273	9,148	7,758	367	17,194	9,181	7,652	361
Port Orchard	4,636	3,070	1,504	62	5,695	3,701	1,841	153
Poulsbo	4,115	2,676	1,208	231	4,440	3,005	1,209	226
Kittitas	21,900	14,309	4,743	2,848	23,084	15,287	4,876	2,921
Unincorporated	11,430	8,600	606	2,224	12,139	9,273	606	2,260
Incorporated	10,470	5,709	4,137	624	10,945	6,014	4,270	661
Cle Elum	1,105	838	200	67	1,098	838	193	67
Ellensburg	7,867	3,770	3,834	263	8,315	4,072	3,945	298
Kittitas	579	303	52	224	618	306	81	231
Roslyn	648	599	31	18	645	600	31	14
South Cle Elum	271	199	20	52	269	198	20	51
Klickitat	9,786	6,229	820	2,737	10,288	6,568	864	2,856
Unincorporated	6,799	4,328	196	2,275	7,165	4,565	212	2,388
Incorporated	2,987	1,901	624	462	3,123	2,003	652	468
Bingen	313	213	63	37	321	213	67	41
Goldendale	1,635	965	354	316	1,651	973	360	318
White Salmon	1,039	723	207	109	1,151	817	225	109
Lewis	34,050	22,647	3,942	7,461	34,784	23,002	4,136	7,646
Unincorporated	20,768	14,244	390	6,134	21,219	14,430	435	6,354
Incorporated	13,282	8,403	3,552	1,327	13,565	8,572	3,701	1,292
Centralia	7,265	4,459	2,199	607	7,500	4,585	2,333	582
Chehalis	3,131	2,019	1,083	29	3,161	2,039	1,092	30
Morton	535	393	75	67	536	394	75	67
Mossyrock	302	133	17	152	296	134	17	145
Napavine	662	471	48	143	685	489	54	142
Pe Ell	290	216	15	59	293	218	15	60
Toledo	304	184	57	63	304	186	58	60
Vader	258	147	4	107	256	146	4	106
Winlock	535	381	54	100	534	381	53	100
Lincoln	5,776	4,120	206	1,450	5,952	4,268	208	1,476
Unincorporated	3,103	2,059	15	1,029	3,280	2,205	15	1,060
Incorporated	2,673	2,061	191	421	2,672	2,063	193	416
Almira	155	134	0	21	156	137	0	19
Creston	130	85	8	37	127	83	8	36
Davenport	750	518	114	118	749	520	114	115
Harrington	219	167	16	36	218	166	16	36
Odessa	460	425	4	31	460	425	4	31
Rear dan	255	180	17	58	257	180	19	58
Sprague	236	176	4	56	236	176	4	56
Wilbur	468	376	28	64	469	376	28	65

Table 8. Housing Units by Structure Type for Cities, Towns and Counties – April 1, 2010, and April 1, 2015
(continued)

County Municipality	April 1, 2010, Structure Type				Estimated April 1, 2015, Structure Type			
	Total	1 Unit	2+ Units	MH/TR/Spec	Total	1 Unit	2+ Units	MH/TR/Spec
Mason	32,518	22,817	1,407	8,294	33,231	23,353	1,419	8,459
Unincorporated	28,671	20,168	605	7,898	29,391	20,712	617	8,062
Incorporated	3,847	2,649	802	396	3,840	2,641	802	397
Shelton	3,847	2,649	802	396	3,840	2,641	802	397
Okanogan	22,245	15,285	1,667	5,293	22,918	15,773	1,721	5,424
Unincorporated	14,916	10,459	285	4,172	15,462	10,874	291	4,297
Incorporated	7,329	4,826	1,382	1,121	7,456	4,899	1,430	1,127
Brewster	730	375	209	146	739	383	211	145
Conconully	189	143	4	42	199	149	6	44
Coulee Dam <i>part</i>	440	388	51	1	443	387	51	5
Elmer City	112	77	12	23	131	83	15	33
Nespelem	77	38	2	37	81	38	2	41
Okanogan	1,051	728	173	150	1,073	740	168	165
Omak	2,168	1,491	442	235	2,204	1,496	478	230
Oroville	797	537	167	93	804	537	177	90
Pateros	276	190	20	66	220	160	16	44
Riverside	154	94	0	60	158	94	0	64
Tonasket	511	274	167	70	550	314	167	69
Twisp	524	304	84	136	538	316	84	138
Winthrop	300	187	51	62	316	202	55	59
Pacific	15,547	10,415	1,161	3,971	15,818	10,659	1,165	3,994
Unincorporated	11,357	7,649	290	3,418	11,604	7,862	291	3,451
Incorporated	4,190	2,766	871	553	4,214	2,797	874	543
Ilwaco	567	386	81	100	573	392	81	100
Long Beach	1,564	986	392	186	1,586	1,008	391	187
Raymond	1,279	823	275	181	1,288	824	281	183
South Bend	780	571	123	86	767	573	121	73
Pend Oreille	7,936	5,418	422	2,096	8,183	5,620	428	2,135
Unincorporated	6,335	4,403	34	1,898	6,565	4,592	40	1,933
Incorporated	1,601	1,015	388	198	1,618	1,028	388	202
Cusick	101	81	2	18	101	81	2	18
Ione	237	158	19	60	237	159	19	59
Metaline	103	77	6	20	104	78	6	20
Metaline Falls	206	83	114	9	206	83	114	9
Newport	954	616	247	91	970	627	247	96
Pierce	325,375	218,828	80,645	25,902	337,889	227,526	84,078	26,285
Unincorporated	140,160	102,070	15,722	22,368	146,247	107,373	16,166	22,708
Incorporated	185,215	116,758	64,923	3,534	191,642	120,153	67,912	3,577
Auburn <i>part</i>	3,146	1,196	1,950	0	3,950	1,754	2,196	0
Bonney Lake	6,394	5,377	534	483	7,132	5,902	761	469
Buckley	1,669	1,314	273	82	1,713	1,359	281	73
Carbonado	218	191	0	27	219	193	0	26
DuPont	3,241	2,390	850	1	3,735	2,527	1,207	1
Eatonville	1,059	875	119	65	1,102	908	127	67
Edgewood	3,801	3,271	336	194	3,878	3,350	336	192
Enumclaw <i>part</i>	0	0	0	0	0	0	0	0
Fife	3,895	1,623	2,175	97	4,001	1,695	2,211	95
Fircrest	2,847	2,179	668	0	2,869	2,194	675	0
Gig Harbor	3,560	2,059	1,371	130	4,303	2,409	1,759	135
Lakewood	26,548	13,488	11,600	1,460	26,676	13,530	11,696	1,450
Milton <i>part</i>	2,724	1,630	1,082	12	2,822	1,643	1,096	83
Orting	2,361	2,049	143	169	2,552	2,238	143	171
Pacific <i>part</i>	45	35	0	10	35	26	0	9
Puyallup	16,171	9,577	6,429	165	17,014	10,053	6,800	161

Table 8. Housing Units by Structure Type for Cities, Towns and Counties – April 1, 2010, and April 1, 2015
(continued)

County Municipality	April 1, 2010, Structure Type				Estimated April 1, 2015, Structure Type			
	Total	1 Unit	2+ Units	MH/TR/Spec	Total	1 Unit	2+ Units	MH/TR/Spec
Pierce <i>continued</i>								
Roy	326	264	16	46	329	267	16	46
Ruston	430	349	81	0	447	364	83	0
South Prairie	174	155	0	19	173	155	0	18
Steilacoom	2,793	1,986	807	0	2,834	2,023	811	0
Sumner	4,279	2,493	1,533	253	4,307	2,516	1,533	258
Tacoma	85,786	55,639	29,930	217	87,573	56,294	31,062	217
University Place	13,573	8,456	5,026	91	13,800	8,588	5,119	93
Wilkeson	175	162	0	13	178	165	0	13
San Juan	13,313	11,006	896	1,411	13,756	11,400	930	1,426
Unincorporated	12,040	10,409	366	1,265	12,430	10,766	385	1,279
Incorporated	1,273	597	530	146	1,326	634	545	147
Friday Harbor	1,273	597	530	146	1,326	634	545	147
Skagit	51,473	37,078	7,913	6,482	52,717	38,193	7,992	6,532
Unincorporated	22,798	17,482	533	4,783	23,113	17,746	533	4,834
Incorporated	28,675	19,596	7,380	1,699	29,604	20,447	7,459	1,698
Anacortes	7,680	6,135	1,369	176	7,875	6,314	1,382	179
Burlington	3,419	2,057	1,279	83	3,453	2,067	1,303	83
Concrete	376	263	73	40	364	261	73	30
Hamilton	141	99	0	42	142	99	0	43
La Conner	526	369	121	36	530	370	125	35
Lyman	172	124	3	45	175	127	3	45
Mount Vernon	12,058	7,712	3,510	836	12,711	8,335	3,542	834
Sedro-Woolley	4,303	2,837	1,025	441	4,354	2,874	1,031	449
Skamania	5,628	3,775	368	1,485	5,826	3,906	387	1,533
Unincorporated	4,466	2,985	115	1,366	4,614	3,104	117	1,393
Incorporated	1,162	790	253	119	1,212	802	270	140
North Bonneville	459	298	101	60	482	302	101	79
Stevenson	703	492	152	59	730	500	169	61
Snohomish	286,659	191,686	75,546	19,427	300,729	200,661	80,538	19,530
Unincorporated	118,025	86,980	17,613	13,432	127,382	92,822	21,033	13,527
Incorporated	168,634	104,706	57,933	5,995	173,347	107,839	59,505	6,003
Arlington	6,929	4,564	1,771	594	7,078	4,706	1,785	587
Bothell <i>part</i>	6,702	4,396	1,510	796	6,925	4,619	1,510	796
Brier	2,220	2,162	31	27	2,342	2,281	32	29
Darrington	644	485	35	124	645	487	35	123
Edmonds	18,378	11,685	6,664	29	18,548	11,744	6,773	31
Everett	44,609	21,299	22,076	1,234	45,394	21,734	22,429	1,231
Gold Bar	837	525	28	284	854	528	28	298
Granite Falls	1,344	990	274	80	1,358	996	280	82
Index	116	113	0	3	117	114	0	3
Lake Stevens	10,414	8,223	1,801	390	10,908	8,698	1,818	392
Lynnwood	14,939	7,640	6,748	551	15,012	7,695	6,761	556
Marysville	22,363	17,197	3,935	1,231	23,610	18,046	4,336	1,228
Mill Creek	7,923	5,060	2,854	9	8,474	5,272	3,194	8
Monroe	5,306	3,740	1,477	89	5,404	3,835	1,483	86
Mountlake Terrace	8,602	5,293	3,207	102	8,992	5,443	3,448	101
Mukilteo	8,547	5,469	3,070	8	8,664	5,586	3,070	8
Snohomish	3,959	2,380	1,524	55	4,085	2,445	1,589	51
Stanwood	2,584	1,851	727	6	2,704	1,967	733	4
Sultan	1,752	1,168	201	383	1,764	1,174	201	389
Woodway	466	466	0	0	469	469	0	0

Table 8. Housing Units by Structure Type for Cities, Towns and Counties – April 1, 2010, and April 1, 2015
(continued)

County Municipality	April 1, 2010, Structure Type				Estimated April 1, 2015, Structure Type			
	Total	1 Unit	2+ Units	MH/TR/Spec	Total	1 Unit	2+ Units	MH/TR/Spec
Spokane	201,434	136,295	51,526	13,613	209,355	140,393	55,110	13,852
Unincorporated	54,157	39,423	5,460	9,274	56,218	41,389	5,390	9,439
Incorporated	147,277	96,872	46,066	4,339	153,137	99,004	49,720	4,413
Airway Heights	1,727	881	318	528	2,945	1,148	1,261	536
Cheney	4,183	1,729	2,323	131	4,517	1,757	2,632	128
Deer Park	1,532	1,069	291	172	1,647	1,165	313	169
Fairfield	240	186	11	43	241	187	11	43
Latah	91	81	0	10	91	81	0	10
Liberty Lake	3,344	2,121	1,090	133	3,938	2,549	1,256	133
Medical Lake	1,835	1,274	431	130	1,870	1,307	431	132
Millwood	793	673	106	14	792	672	106	14
Rockford	213	157	0	56	213	157	0	56
Spangle	126	83	0	43	127	84	0	43
Spokane	94,291	63,001	29,755	1,535	96,084	63,865	30,663	1,556
Spokane Valley	38,851	25,593	11,741	1,517	40,617	26,006	13,047	1,564
Waverly	51	24	0	27	55	26	0	29
Stevens	21,156	14,535	1,125	5,496	21,570	14,885	1,159	5,526
Unincorporated	16,557	11,485	172	4,900	16,915	11,811	176	4,928
Incorporated	4,599	3,050	953	596	4,655	3,074	983	598
Chewelah	1,284	809	252	223	1,296	819	252	225
Colville	2,221	1,477	539	205	2,254	1,486	569	199
Kettle Falls	726	504	154	68	734	509	154	71
Marcus	82	57	0	25	83	57	0	26
Northport	168	142	8	18	168	142	8	18
Springdale	118	61	0	57	120	61	0	59
Thurston	108,182	74,429	20,060	13,693	114,404	78,977	21,613	13,814
Unincorporated	55,316	41,302	3,452	10,562	56,868	42,737	3,427	10,704
Incorporated	52,866	33,127	16,608	3,131	57,536	36,240	18,186	3,110
Bucoda	243	201	2	40	244	201	2	41
Lacey	18,493	12,690	4,957	846	19,767	13,948	4,964	855
Olympia	22,086	12,894	8,439	753	24,283	13,733	9,813	737
Rainier	717	566	17	134	750	610	18	122
Tenino	740	512	77	151	753	518	83	152
Tumwater	8,064	4,354	2,638	1,072	8,713	4,942	2,698	1,073
Yelm	2,523	1,910	478	135	3,026	2,288	608	130
Wahkiakum	2,067	1,440	83	544	2,127	1,482	83	562
Unincorporated	1,771	1,236	3	532	1,830	1,277	3	550
Incorporated	296	204	80	12	297	205	80	12
Cathlamet	296	204	80	12	297	205	80	12
Walla Walla	23,451	16,146	4,732	2,573	24,383	16,658	5,076	2,649
Unincorporated	6,495	4,933	212	1,350	6,602	4,944	258	1,400
Incorporated	16,956	11,213	4,520	1,223	17,781	11,714	4,818	1,249
College Place	3,764	2,312	1,080	372	3,895	2,419	1,103	373
Prescott	156	59	2	95	158	59	2	97
Waitsburg	522	337	16	169	529	340	21	168
Walla Walla	12,514	8,505	3,422	587	13,199	8,896	3,692	611
Whatcom	90,665	57,295	22,766	10,604	94,069	59,405	23,935	10,729
Unincorporated	40,456	29,322	2,330	8,804	41,541	30,111	2,469	8,961
Incorporated	50,209	27,973	20,436	1,800	52,528	29,294	21,466	1,768
Bellingham	36,760	18,680	17,117	963	37,825	19,096	17,804	925
Blaine	2,346	1,568	646	132	2,460	1,646	687	127
Everson	865	563	224	78	899	580	241	78
Ferndale	4,428	2,981	995	452	5,002	3,428	1,127	447

Table 8. Housing Units by Structure Type for Cities, Towns and Counties – April 1, 2010, and April 1, 2015
(continued)

County Municipality	April 1, 2010, Structure Type				Estimated April 1, 2015, Structure Type			
	Total	1 Unit	2+ Units	MH/TR/Spec	Total	1 Unit	2+ Units	MH/TR/Spec
Whatcom continued								
Lynden	4,812	3,481	1,250	81	5,275	3,787	1,399	89
Nooksack	457	374	45	38	498	413	45	40
Sumas	541	326	159	56	569	344	163	62
Whitman	19,323	9,555	8,056	1,712	20,365	9,866	8,775	1,724
Unincorporated	2,848	2,427	38	383	2,918	2,467	38	413
Incorporated	16,475	7,128	8,018	1,329	17,447	7,399	8,737	1,311
Albion	302	129	14	159	287	128	14	145
Colfax	1,405	857	426	122	1,407	861	430	116
Colton	167	143	3	21	170	145	5	20
Endicott	165	135	0	30	173	142	0	31
Farmington	65	54	0	11	66	55	0	11
Garfield	311	200	40	71	311	200	40	71
Lacrosse	181	137	3	41	183	137	3	43
Lamont	40	29	1	10	40	29	1	10
Malden	118	103	0	15	116	103	0	13
Oakesdale	196	162	0	34	198	164	0	34
Palouse	474	352	30	92	488	363	30	95
Pullman	11,966	4,033	7,405	528	12,896	4,252	8,118	526
Rosalia	270	198	21	51	273	198	21	54
St. John	306	217	34	55	309	223	34	52
Tekoa	360	273	41	46	361	275	41	45
Uniontown	149	106	0	43	169	124	0	45
Yakima	85,474	56,637	15,774	13,063	87,982	57,719	16,765	13,498
Unincorporated	29,927	20,970	692	8,265	30,884	21,310	923	8,651
Incorporated	55,547	35,667	15,082	4,798	57,098	36,409	15,842	4,847
Grandview	3,136	2,095	554	487	3,237	2,150	599	488
Granger	813	506	95	212	918	565	129	224
Harrah	180	110	14	56	186	114	16	56
Mabton	548	366	83	99	552	370	83	99
Moxee	1,032	892	87	53	1,190	1,024	104	62
Naches	346	256	34	56	364	261	44	59
Selah	2,759	2,007	705	47	2,912	2,098	783	31
Sunnyside	4,556	2,714	1,211	631	4,676	2,786	1,235	655
Tieton	385	218	48	119	412	240	54	118
Toppenish	2,334	1,650	556	128	2,339	1,651	558	130
Union Gap	2,173	1,282	155	736	2,206	1,293	173	740
Wapato	1,293	929	280	84	1,300	936	280	84
Yakima	34,887	21,880	11,033	1,974	35,639	22,106	11,550	1,983
Zillah	1,105	762	227	116	1,167	815	234	118
Washington	2,885,677	1,876,492	759,376	249,809	3,008,881	1,943,091	812,419	253,371
Unincorporated	1,046,633	775,914	87,266	183,453	1,050,060	780,319	83,833	185,908
Incorporated	1,839,044	1,100,578	672,110	66,356	1,958,821	1,162,772	728,586	67,463

- Notes:
- The 2010 counts for total housing units represent federal census counts, special city census counts or OFM adjusted counts that control for annexations occurring between Jan. 1 and April 1 in the decennial census year.
 - Estimates of housing units by structure type for 2010 are developed using an allocation procedure based on Census 2010 Summary File 1 data, housing completion data reported by cities and counties (2000–09), annexation census data (2000–09) and Census 2000 Summary File 3 data. The resulting 2010 estimates maintain the 2010 census counts of total housing units, occupied housing units and population in housing units.
 - Housing unit estimates (post-2010) are developed using housing completion data reported by cities and counties and annexation census data.
 - Housing unit estimates (post- 2010) are revised in cases where more accurate data become available.

Table 9. Annexations, Incorporations and Other Municipal Boundary Changes Approved by the Office of Financial Management

Municipality by County	Boundary Changes: April 2, 2010 – April 1, 2015					Boundary Changes: April 2, 2014 – April 1, 2015				
	Annex. Parcels	Area (sq mi)	Housing Units Total	Occ.	Pop. Total	Annex. Parcels	Area (sq mi)	Housing Units Total	Occ.	Pop. Total
Adams	6	0.203	0	0	0	2	0.025	0	0	0
Hatton	0	0.000	0	0	0	0	0.000	0	0	0
Lind	1	0.054	0	0	0	0	0.000	0	0	0
Othello	4	0.130	0	0	0	1	0.006	0	0	0
Ritzville	1	0.019	0	0	0	1	0.019	0	0	0
Washtucna	0	0.000	0	0	0	0	0.000	0	0	0
Asotin	5	0.014	0	0	0	0	0.000	0	0	0
Asotin	3	0.011	0	0	0	0	0.000	0	0	0
Clarkston	2	0.003	0	0	0	0	0.000	0	0	0
Benton	10	3.972	8	8	16	3	0.683	0	0	0
Benton City	0	0.000	0	0	0	0	0.000	0	0	0
Kennewick	1	0.497	0	0	0	1	0.497	0	0	0
Prosser	4	0.238	1	1	2	1	0.178	0	0	0
Richland	5	3.237	7	7	14	1	0.008	0	0	0
West Richland	0	0.000	0	0	0	0	0.000	0	0	0
Chelan	17	0.389	81	76	194	5	0.120	7	6	10
Cashmere	3	0.083	5	5	12	1	0.002	1	1	2
Chelan	0	0.000	0	0	0	0	0.000	0	0	0
Entiat	1	0.063	0	0	0	1	0.063	0	0	0
Leavenworth	3	0.038	0	0	0	0	0.000	0	0	0
Wenatchee	10	0.205	76	71	182	3	0.055	6	5	8
Clallam	10	0.510	9	8	14	1	0.016	1	1	2
Forks	5	0.465	9	8	14	1	0.016	1	1	2
Port Angeles	1	0.025	0	0	0	0	0.000	0	0	0
Sequim	4	0.020	0	0	0	0	0.000	0	0	0
Clark	21	3.047	524	471	969	3	0.083	2	2	5
Battle Ground	6	1.250	75	65	206	1	0.069	2	2	5
Camas	5	0.231	14	14	38	1	0.001	0	0	0
La Center	1	0.911	56	50	120	0	0.000	0	0	0
Ridgefield	1	0.057	0	0	0	0	0.000	0	0	0
Vancouver	4	0.500	374	338	592	0	0.000	0	0	0
Washougal	1	0.046	3	3	9	0	0.000	0	0	0
Woodland <i>part</i>	0	0.000	0	0	0	0	0.000	0	0	0
Yacolt	3	0.052	2	1	4	1	0.013	0	0	0
Columbia	0	0.000	0	0	0	0	0.000	0	0	0
Dayton	0	0.000	0	0	0	0	0.000	0	0	0
Starbuck	0	0.000	0	0	0	0	0.000	0	0	0
Cowlitz	11	2.546	149	136	338	4	1.078	7	5	10
Castle Rock	2	0.431	54	50	123	0	0.000	0	0	0
Kalama	4	0.660	7	5	10	3	0.594	7	5	10
Kelso	0	0.000	0	0	0	0	0.000	0	0	0
Longview	3	0.524	70	64	168	1	0.484	0	0	0
Woodland <i>part</i>	2	0.931	18	17	37	0	0.000	0	0	0
Douglas	2	0.080	29	29	68	1	0.077	29	29	68
Bridgeport	1	0.003	0	0	0	0	0.000	0	0	0
Coulee Dam <i>part</i>	0	0.000	0	0	0	0	0.000	0	0	0
East Wenatchee	0	0.000	0	0	0	0	0.000	0	0	0
Mansfield	0	0.000	0	0	0	0	0.000	0	0	0
Rock Island	1	0.077	29	29	68	1	0.077	29	29	68
Waterville	0	0.000	0	0	0	0	0.000	0	0	0

Table 9. Annexations, Incorporations and Other Municipal Boundary Changes Approved by the Office of Financial Management (continued)

Municipality by County	Boundary Changes: April 2, 2010 – April 1, 2015					Boundary Changes: April 2, 2014 – April 1, 2015				
	Annex. Parcels	Area (sq mi)	Housing Total	Units Occ.	Pop. Total	Annex. Parcels	Area (sq mi)	Housing Total	Units Occ.	Pop. Total
Ferry	0	0.000	0	0	0	0	0.000	0	0	0
Republic	0	0.000	0	0	0	0	0.000	0	0	0
Franklin	6	2.052	534	513	1,454	1	0.009	1	0	0
Connell	2	0.239	0	0	0	0	0.000	0	0	0
Kahlotus	0	0.000	0	0	0	0	0.000	0	0	0
Mesa	0	0.000	0	0	0	0	0.000	0	0	0
Pasco	4	1.813	534	513	1,454	1	0.009	1	0	0
Garfield	0	0.000	0	0	0	0	0.000	0	0	0
Pomeroy	0	0.000	0	0	0	0	0.000	0	0	0
Grant	37	6.128	87	78	235	10	0.331	1	1	1
Coulee City	3	0.271	0	0	0	0	0.000	0	0	0
Coulee Dam <i>part</i>	0	0.000	0	0	0	0	0.000	0	0	0
Electric City	3	2.107	6	6	12	0	0.000	0	0	0
Ephrata	2	0.254	0	0	0	0	0.000	0	0	0
George	0	0.000	0	0	0	0	0.000	0	0	0
Grand Coulee	1	0.026	22	20	32	0	0.000	0	0	0
Hartline	0	0.000	0	0	0	0	0.000	0	0	0
Krupp	0	0.000	0	0	0	0	0.000	0	0	0
Mattawa	1	0.124	0	0	0	0	0.000	0	0	0
Moses Lake	10	2.195	52	46	169	1	0.013	0	0	0
Quincy	11	0.632	7	6	22	8	0.284	1	1	1
Royal City	1	0.004	0	0	0	0	0.000	0	0	0
Soap Lake	4	0.136	0	0	0	1	0.034	0	0	0
Warden	1	0.379	0	0	0	0	0.000	0	0	0
Wilson Creek	0	0.000	0	0	0	0	0.000	0	0	0
Grays Harbor	5	0.258	0	0	0	1	0.019	0	0	0
Aberdeen	0	0.000	0	0	0	0	0.000	0	0	0
Cosmopolis	0	0.000	0	0	0	0	0.000	0	0	0
Elma	2	0.002	0	0	0	0	0.000	0	0	0
Hoquiam	0	0.000	0	0	0	0	0.000	0	0	0
McCleary	2	0.081	0	0	0	1	0.019	0	0	0
Montesano	1	0.175	0	0	0	0	0.000	0	0	0
Oakville	0	0.000	0	0	0	0	0.000	0	0	0
Ocean Shores	0	0.000	0	0	0	0	0.000	0	0	0
Westport	0	0.000	0	0	0	0	0.000	0	0	0
Island	3	0.233	36	24	23	0	0.000	0	0	0
Coupeville	0	0.000	0	0	0	0	0.000	0	0	0
Langley	0	0.000	0	0	0	0	0.000	0	0	0
Oak Harbor	3	0.233	36	24	23	0	0.000	0	0	0
Jefferson	0	0.000	0	0	0	0	0.000	0	0	0
Port Townsend	0	0.000	0	0	0	0	0.000	0	0	0
King	66	21.702	32,930	31,308	86,342	15	0.777	39	35	81
Algona	1	0.000	0	0	0	0	0.000	0	0	0
Auburn <i>part</i>	0	0.000	0	0	0	0	0.000	0	0	0
Beaux Arts Village	0	0.000	0	0	0	0	0.000	0	0	0
Bellevue	5	1.436	2,149	2,064	5,630	0	0.000	0	0	0
Black Diamond	0	0.000	0	0	0	0	0.000	0	0	0
Bothell <i>part</i>	11	1.592	2,785	2,698	6,801	1	0.019	5	5	12
Burien	1	2.617	5,526	5,135	14,292	0	0.000	0	0	0
Carnation	0	0.000	0	0	0	0	0.000	0	0	0

Table 9. Annexations, Incorporations and Other Municipal Boundary Changes Approved by the Office of Financial Management (continued)

Municipality by County	Boundary Changes: April 2, 2010 – April 1, 2015					Boundary Changes: April 2, 2014 – April 1, 2015				
	Annex. Parcels	Area (sq mi)	Housing Units Total Occ.		Pop. Total	Annex. Parcels	Area (sq mi)	Housing Units Total Occ.		Pop. Total
King <i>continued</i>										
Clyde Hill	0	0.000	0	0	0	0	0.000	0	0	0
Covington	0	0.000	0	0	0	0	0.000	0	0	0
Des Moines	0	0.000	0	0	0	0	0.000	0	0	0
Duvall	1	0.002	0	0	0	1	0.002	0	0	0
Enumclaw <i>part</i>	8	0.880	166	147	366	1	0.000	0	0	0
Federal Way	0	0.000	0	0	0	0	0.000	0	0	0
Hunts Point	0	0.000	0	0	0	0	0.000	0	0	0
Issaquah	6	0.720	0	0	0	1	0.594	0	0	0
Kenmore	0	0.000	0	0	0	0	0.000	0	0	0
Kent	3	5.324	9,045	8,582	25,458	2	0.094	0	0	0
Kirkland	3	6.963	12,541	11,998	31,816	0	0.000	0	0	0
Lake Forest Park	0	0.000	0	0	0	0	0.000	0	0	0
Maple Valley	0	0.000	0	0	0	0	0.000	0	0	0
Medina	0	0.000	0	0	0	0	0.000	0	0	0
Mercer Island	0	0.000	0	0	0	0	0.000	0	0	0
Milton <i>part</i>	5	0.017	0	0	0	5	0.017	0	0	0
Newcastle	0	0.000	0	0	0	0	0.000	0	0	0
Normandy Park	0	0.000	0	0	0	0	0.000	0	0	0
North Bend	2	0.116	38	37	98	0	0.000	0	0	0
Pacific <i>part</i>	0	0.000	0	0	0	0	0.000	0	0	0
Redmond	3	0.191	71	66	149	0	0.000	0	0	0
Renton	10	0.283	316	302	826	3	0.040	34	30	69
Sammamish	2	0.187	293	279	906	0	0.000	0	0	0
SeaTac	0	0.000	0	0	0	0	0.000	0	0	0
Seattle	0	0.000	0	0	0	0	0.000	0	0	0
Shoreline	0	0.000	0	0	0	0	0.000	0	0	0
Skykomish	1	0.011	0	0	0	1	0.011	0	0	0
Snoqualmie	2	0.957	0	0	0	0	0.000	0	0	0
Tukwila	2	0.406	0	0	0	0	0.000	0	0	0
Woodinville	0	0.000	0	0	0	0	0.000	0	0	0
Yarrow Point	0	0.000	0	0	0	0	0.000	0	0	0
Kitsap	12	2.325	446	397	978	0	0.000	0	0	0
Bainbridge Island	0	0.000	0	0	0	0	0.000	0	0	0
Bremerton	0	0.000	0	0	0	0	0.000	0	0	0
Port Orchard	10	2.248	430	382	943	0	0.000	0	0	0
Poulsbo	2	0.077	16	15	35	0	0.000	0	0	0
Kittitas	15	1.765	74	50	142	10	1.554	10	10	18
Cle Elum	6	1.026	0	0	0	6	1.026	0	0	0
Ellensburg	4	0.639	74	50	142	3	0.528	10	10	18
Kittitas	5	0.100	0	0	0	1	0.000	0	0	0
Roslyn	0	0.000	0	0	0	0	0.000	0	0	0
South Cle Elum	0	0.000	0	0	0	0	0.000	0	0	0
Klickitat	11	1.994	57	50	101	2	0.031	45	40	85
Bingen	0	0.000	0	0	0	0	0.000	0	0	0
Goldendale	5	1.763	0	0	0	0	0.000	0	0	0
White Salmon	6	0.231	57	50	101	2	0.031	45	40	85
Lewis	12	0.582	131	119	296	2	0.462	43	36	84
Centralia	4	0.116	130	118	294	1	0.054	43	36	84
Chehalis	0	0.000	0	0	0	0	0.000	0	0	0
Morton	1	0.009	0	0	0	0	0.000	0	0	0
Mossyrock	2	0.025	0	0	0	0	0.000	0	0	0
Napavine	1	0.408	0	0	0	1	0.408	0	0	0

Table 9. Annexations, Incorporations and Other Municipal Boundary Changes Approved by the Office of Financial Management (continued)

Municipality by County	Boundary Changes: April 2, 2010 – April 1, 2015					Boundary Changes: April 2, 2014 – April 1, 2015				
	Annex. Parcels	Area (sq mi)	Housing Units Total	Pop. Occ.	Pop. Total	Annex. Parcels	Area (sq mi)	Housing Units Total	Pop. Occ.	Pop. Total
Lewis <i>continued</i>										
Pe Ell	1	0.011	0	0	0	0	0.000	0	0	0
Toledo	1	0.000	1	1	2	0	0.000	0	0	0
Vader	1	0.013	0	0	0	0	0.000	0	0	0
Winlock	1	0.000	0	0	0	0	0.000	0	0	0
Lincoln	8	0.745	0	0	0	2	0.434	0	0	0
Almira	1	0.002	0	0	0	0	0.000	0	0	0
Creston	1	0.002	0	0	0	1	0.002	0	0	0
Davenport	0	0.000	0	0	0	0	0.000	0	0	0
Harrington	0	0.000	0	0	0	0	0.000	0	0	0
Odessa	0	0.000	0	0	0	0	0.000	0	0	0
Rear dan	0	0.000	0	0	0	0	0.000	0	0	0
Sprague	2	0.447	0	0	0	1	0.432	0	0	0
Wilbur	4	0.294	0	0	0	0	0.000	0	0	0
Mason	0	0.000	0	0	0	0	0.000	0	0	0
Shelton	0	0.000	0	0	0	0	0.000	0	0	0
Okanogan	20	0.425	78	68	169	1	0.009	0	0	0
Brewster	0	0.000	0	0	0	0	0.000	0	0	0
Conconully	0	0.000	0	0	0	0	0.000	0	0	0
Coulee Dam <i>part</i>	0	0.000	0	0	0	0	0.000	0	0	0
Elmer City	1	0.007	0	0	0	0	0.000	0	0	0
Nespelem	0	0.000	0	0	0	0	0.000	0	0	0
Okanogan	3	0.024	28	26	54	0	0.000	0	0	0
Omak	1	0.027	0	0	0	0	0.000	0	0	0
Oroville	2	0.072	4	1	5	0	0.000	0	0	0
Pateros	1	0.026	0	0	0	0	0.000	0	0	0
Riverside	0	0.000	0	0	0	0	0.000	0	0	0
Tonasket	8	0.139	46	41	110	1	0.009	0	0	0
Twisp	3	0.129	0	0	0	0	0.000	0	0	0
Winthrop	1	0.001	0	0	0	0	0.000	0	0	0
Pacific	4	0.393	2	1	2	2	0.275	0	0	0
Ilwaco	0	0.000	0	0	0	0	0.000	0	0	0
Long Beach	2	0.118	2	1	2	0	0.000	0	0	0
Raymond	2	0.275	0	0	0	2	0.275	0	0	0
South Bend	0	0.000	0	0	0	0	0.000	0	0	0
Pend Oreille	2	0.003	1	1	2	0	0.000	0	0	0
Cusick	0	0.000	0	0	0	0	0.000	0	0	0
Ione	1	0.003	1	1	2	0	0.000	0	0	0
Metaline	0	0.000	0	0	0	0	0.000	0	0	0
Metaline Falls	0	0.000	0	0	0	0	0.000	0	0	0
Newport	1	0.000	0	0	0	0	0.000	0	0	0
Pierce	19	0.489	172	166	360	1	0.014	0	0	0
Auburn <i>part</i>	0	0.000	0	0	0	0	0.000	0	0	0
Bonney Lake	0	0.000	0	0	0	0	0.000	0	0	0
Buckley	0	0.000	0	0	0	0	0.000	0	0	0
Carbonado	0	0.000	0	0	0	0	0.000	0	0	0
DuPont	0	0.000	0	0	0	0	0.000	0	0	0
Eatonville	1	0.001	0	0	0	0	0.000	0	0	0
Edgewood	0	0.000	0	0	0	0	0.000	0	0	0
Enumclaw <i>part</i>	0	0.000	0	0	0	0	0.000	0	0	0
Fife	1	0.014	0	0	0	1	0.014	0	0	0

Table 9. Annexations, Incorporations and Other Municipal Boundary Changes Approved by the Office of Financial Management (continued)

Municipality by County	Boundary Changes: April 2, 2010 – April 1, 2015					Boundary Changes: April 2, 2014 – April 1, 2015				
	Annex. Parcels	Area (sq mi)	Housing Units Total	Pop. Occ.	Pop. Total	Annex. Parcels	Area (sq mi)	Housing Units Total	Pop. Occ.	Pop. Total
Pierce continued										
Fircrest	0	0.000	0	0	0	0	0.000	0	0	0
Gig Harbor	8	0.043	1	1	4	0	0.000	0	0	0
Lakewood	0	0.000	0	0	0	0	0.000	0	0	0
Milton <i>part</i>	1	0.141	95	94	178	0	0.000	0	0	0
Orting	0	0.000	0	0	0	0	0.000	0	0	0
Pacific <i>part</i>	0	0.000	0	0	0	0	0.000	0	0	0
Puyallup	4	0.228	76	71	178	0	0.000	0	0	0
Roy	0	0.000	0	0	0	0	0.000	0	0	0
Ruston	0	0.000	0	0	0	0	0.000	0	0	0
South Prairie	0	0.000	0	0	0	0	0.000	0	0	0
Steilacoom	0	0.000	0	0	0	0	0.000	0	0	0
Sumner	1	0.025	0	0	0	0	0.000	0	0	0
Tacoma	2	0.037	0	0	0	0	0.000	0	0	0
University Place	1	0.000	0	0	0	0	0.000	0	0	0
Wilkeson	0	0.000	0	0	0	0	0.000	0	0	0
San Juan	1	0.031	0	0	0	0	0.000	0	0	0
Friday Harbor	1	0.031	0	0	0	0	0.000	0	0	0
Skagit	8	0.204	24	18	44	2	0.062	2	0	0
Anacortes	0	0.000	0	0	0	0	0.000	0	0	0
Burlington	1	0.001	0	0	0	1	0.001	0	0	0
Concrete	0	0.000	0	0	0	0	0.000	0	0	0
Hamilton	0	0.000	0	0	0	0	0.000	0	0	0
La Conner	0	0.000	0	0	0	0	0.000	0	0	0
Lyman	0	0.000	0	0	0	0	0.000	0	0	0
Mount Vernon	1	0.061	2	0	0	1	0.061	2	0	0
Sedro-Woolley	6	0.142	22	18	44	0	0.000	0	0	0
Skamania	0	0.000	0	0	0	0	0.000	0	0	0
North Bonneville	0	0.000	0	0	0	0	0.000	0	0	0
Stevenson	0	0.000	0	0	0	0	0.000	0	0	0
Snohomish	18	0.743	66	60	170	5	0.017	2	2	6
Arlington	6	0.477	16	13	42	1	0.008	0	0	0
Bothell <i>part</i>	0	0.000	0	0	0	0	0.000	0	0	0
Brier	1	0.055	39	38	101	0	0.000	0	0	0
Darrington	0	0.000	0	0	0	0	0.000	0	0	0
Edmonds	0	0.000	0	0	0	0	0.000	0	0	0
Everett	2	0.047	2	2	6	1	0.003	2	2	6
Gold Bar	0	0.000	0	0	0	0	0.000	0	0	0
Granite Falls	5	0.041	1	0	0	3	0.006	0	0	0
Index	0	0.000	0	0	0	0	0.000	0	0	0
Lake Stevens	1	0.017	0	0	0	0	0.000	0	0	0
Lynnwood	1	0.007	0	0	0	0	0.000	0	0	0
Marysville	0	0.000	0	0	0	0	0.000	0	0	0
Mill Creek	0	0.000	0	0	0	0	0.000	0	0	0
Monroe	1	0.063	8	7	21	0	0.000	0	0	0
Mountlake Terrace	0	0.000	0	0	0	0	0.000	0	0	0
Mukilteo	0	0.000	0	0	0	0	0.000	0	0	0
Snohomish	1	0.036	0	0	0	0	0.000	0	0	0
Stanwood	0	0.000	0	0	0	0	0.000	0	0	0
Sultan	0	0.000	0	0	0	0	0.000	0	0	0
Woodway	0	0.000	0	0	0	0	0.000	0	0	0

Table 9. Annexations, Incorporations and Other Municipal Boundary Changes Approved by the Office of Financial Management (continued)

Municipality by County	Boundary Changes: April 2, 2010 – April 1, 2015					Boundary Changes: April 2, 2014 – April 1, 2015				
	Annex. Parcels	Area (sq mi)	Housing Units Total Occ.		Pop. Total	Annex. Parcels	Area (sq mi)	Housing Units Total Occ.		Pop. Total
Spokane	8	10.690	986	849	1,713	0	0.000	0	0	0
Airway Heights	2	0.820	838	727	1,419	0	0.000	0	0	0
Cheney	1	0.078	0	0	0	0	0.000	0	0	0
Deer Park	0	0.000	0	0	0	0	0.000	0	0	0
Fairfield	0	0.003	0	0	0	0	0.000	0	0	0
Latah	0	0.000	0	0	0	0	0.000	0	0	0
Liberty Lake	0	0.000	0	0	0	0	0.000	0	0	0
Medical Lake	0	0.000	0	0	0	0	0.000	0	0	0
Millwood	2	0.000	0	0	0	0	0.000	0	0	0
Rockford	0	0.000	0	0	0	0	0.000	0	0	0
Spangle	0	0.000	0	0	0	0	0.000	0	0	0
Spokane	3	9.789	148	122	294	0	0.000	0	0	0
Spokane Valley	0	0.000	0	0	0	0	0.000	0	0	0
Waverly	0	0.000	0	0	0	0	0.000	0	0	0
Stevens	10	0.222	8	8	26	2	0.016	4	4	11
Chewelah	1	0.002	0	0	0	1	0.002	0	0	0
Colville	4	0.050	6	6	17	1	0.014	4	4	11
Kettle Falls	3	0.158	2	2	9	0	0.000	0	0	0
Marcus	2	0.012	0	0	0	0	0.000	0	0	0
Northport	0	0.000	0	0	0	0	0.000	0	0	0
Springdale	0	0.000	0	0	0	0	0.000	0	0	0
Thurston	12	0.713	239	222	614	2	0.314	229	216	602
Bucoda	2	0.157	0	0	0	0	0.000	0	0	0
Lacey	1	0.118	1	1	2	0	0.000	0	0	0
Olympia	4	0.357	238	221	612	2	0.314	229	216	602
Rainier	3	0.039	0	0	0	0	0.000	0	0	0
Tenino	0	0.000	0	0	0	0	0.000	0	0	0
Tumwater	2	0.042	0	0	0	0	0.000	0	0	0
Yelm	0	0.000	0	0	0	0	0.000	0	0	0
Wahkiakum	0	0.000	0	0	0	0	0.000	0	0	0
Cathlamet	0	0.000	0	0	0	0	0.000	0	0	0
Walla Walla	21	0.413	233	214	573	6	0.323	232	215	572
College Place	11	0.028	5	3	11	3	0.003	1	0	0
Prescott	0	0.000	0	0	0	0	0.000	0	0	0
Waitsburg	2	0.077	0	0	0	0	0.000	0	0	0
Walla Walla	8	0.308	228	211	562	3	0.320	231	215	572
Whatcom	12	0.855	75	72	156	0	0.000	0	0	0
Bellingham	2	0.420	52	51	102	0	0.000	0	0	0
Blaine	0	0.000	0	0	0	0	0.000	0	0	0
Everson	2	0.062	1	1	5	0	0.000	0	0	0
Ferndale	3	0.282	8	6	11	0	0.000	0	0	0
Lynden	5	0.091	14	14	38	0	0.000	0	0	0
Nooksack	0	0.000	0	0	0	0	0.000	0	0	0
Sumas	0	0.000	0	0	0	0	0.000	0	0	0
Whitman	9	1.007	3	2	3	1	0.001	0	0	0
Albion	0	0.000	0	0	0	0	0.000	0	0	0
Colfax	1	0.003	0	0	0	0	0.000	0	0	0
Colton	0	0.000	0	0	0	0	0.000	0	0	0
Endicott	0	0.000	0	0	0	0	0.000	0	0	0
Farmington	0	0.000	0	0	0	0	0.000	0	0	0
Garfield	1	0.009	0	0	0	0	0.000	0	0	0

Table 9. Annexations, Incorporations and Other Municipal Boundary Changes Approved by the Office of Financial Management (continued)

Municipality by County	Boundary Changes: April 2, 2010 – April 1, 2015					Boundary Changes: April 2, 2014 – April 1, 2015				
	Annex. Parcels	Area (sq mi)	Housing Units Total	Units Occ.	Pop. Total	Annex. Parcels	Area (sq mi)	Housing Units Total	Units Occ.	Pop. Total
Whitman <i>continued</i>										
LaCrosse	0	0.000	0	0	0	0	0.000	0	0	0
Lamont	0	0.000	0	0	0	0	0.000	0	0	0
Malden	1	0.001	0	0	0	1	0.001	0	0	0
Oakesdale	0	0.000	0	0	0	0	0.000	0	0	0
Palouse	0	0.000	0	0	0	0	0.000	0	0	0
Pullman	3	0.858	2	1	1	0	0.000	0	0	0
Rosalia	0	0.000	0	0	0	0	0.000	0	0	0
St. John	3	0.136	1	1	2	0	0.000	0	0	0
Tekoa	0	0.000	0	0	0	0	0.000	0	0	0
Uniontown	0	0.000	0	0	0	0	0.000	0	0	0
Yakima	28	1.737	146	129	347	4	0.160	59	52	142
Grandview	3	0.036	2	2	3	0	0.000	0	0	0
Granger	1	0.009	0	0	0	0	0.000	0	0	0
Harrah	0	0.000	0	0	0	0	0.000	0	0	0
Mabton	1	0.021	0	0	0	1	0.021	0	0	0
Moxee	4	0.503	34	31	90	1	0.086	14	12	37
Naches	0	0.000	0	0	0	0	0.000	0	0	0
Selah	3	0.129	51	44	113	1	0.045	45	40	105
Sunnyside	6	0.645	21	21	70	0	0.000	0	0	0
Tieton	1	0.025	6	1	1	0	0.000	0	0	0
Toppenish	1	0.012	0	0	0	0	0.000	0	0	0
Union Gap	0	0.000	0	0	0	0	0.000	0	0	0
Wapato	1	0.008	0	0	0	1	0.008	0	0	0
Yakima	3	0.278	8	7	14	0	0.000	0	0	0
Zillah	4	0.071	24	23	56	0	0.000	0	0	0
Washington	429	66.470	37,128	35,077	95,358	88	6.890	713	654	1,697

- Notes:
- All boundary changes are due to annexation, deannexation, boundary line adjustment or incorporation. Unless otherwise noted, the source is annexation (annexation, deannexation, boundary line adjustment), not incorporation.
 - 'Annex. Parcels' refers to the number of noncontiguous areas annexed. Noncontiguous areas can be annexed under a single ordinance.
 - 'Area' can sometimes be negative due to deannexation or boundary line adjustment.
 - Areas less than 0.0005 square miles are shown as 0.000 square miles.
 - Abbreviations: Annex. – annexation, sq mi – square miles, Occ. – occupied, Pop. – population

Table 10. Population Age 65 Years and Over by County – Census 1990, 2000, 2010; Estimates 2011 to 2015

County	Census			Estimate					Percent of 2015 Population
	1990	2000	2010	2011	2012	2013	2014	2015	
Washington	571,403	662,142	827,677	851,440	893,661	936,472	978,085	1,021,964	14.47
Adams	1,527	1,707	1,915	1,881	2,142	1,930	1,947	1,966	10.13
Asotin	2,903	3,355	4,172	4,209	4,319	4,435	4,577	4,725	21.47
Benton	11,280	14,655	20,586	21,141	22,169	23,454	24,645	25,905	13.74
Chelan	8,145	9,242	11,175	11,417	11,861	12,355	12,810	13,286	17.71
Clallam	11,450	13,651	17,189	17,465	18,099	18,601	19,294	20,019	27.56
Clark	25,193	32,808	48,710	50,727	54,128	57,307	60,810	64,549	14.29
Columbia	764	753	937	932	939	1,011	1,042	1,075	26.28
Cowlitz	11,019	12,368	15,805	16,232	17,169	17,734	18,285	18,860	18.09
Douglas	3,156	4,138	5,443	5,530	5,591	5,961	6,216	6,485	16.22
Ferry	662	915	1,428	1,455	1,334	1,609	1,672	1,738	22.54
Franklin	3,702	4,200	5,696	5,922	6,145	6,557	6,824	7,104	8.15
Garfield	497	501	506	504	541	503	528	554	24.51
Grant	6,930	8,618	10,531	10,674	10,856	11,277	11,628	11,994	12.77
Grays Harbor	10,146	10,321	11,849	12,013	12,359	12,792	13,251	13,731	18.78
Island	8,223	10,211	14,439	14,931	15,802	16,618	17,514	18,465	22.91
Jefferson	4,137	5,550	7,842	8,092	8,418	9,012	9,436	9,884	32.01
King	165,957	181,772	210,679	217,423	229,393	239,334	249,364	259,906	12.66
Kitsap	20,187	24,553	33,296	34,428	36,373	38,222	40,216	42,329	16.39
Kittitas	3,524	3,871	5,212	5,377	5,685	5,939	6,137	6,344	14.87
Klickitat	2,253	2,644	3,625	3,763	3,808	4,159	4,346	4,543	21.63
Lewis	9,248	10,667	13,076	13,237	13,813	14,053	14,671	15,323	19.99
Lincoln	1,744	1,932	2,197	2,223	2,356	2,337	2,423	2,513	23.44
Mason	6,251	8,149	11,112	11,399	11,689	12,309	12,744	13,199	21.22
Okanogan	4,602	5,557	7,070	7,171	7,624	7,850	8,062	8,283	19.79
Pacific	4,039	4,735	5,183	5,190	5,624	5,543	5,666	5,793	27.31
Pend Oreille	1,233	1,750	2,485	2,570	2,615	2,838	2,967	3,104	23.44
Pierce	61,062	71,620	87,785	90,151	94,276	99,302	103,903	108,755	13.1
San Juan	2,132	2,670	3,657	3,833	4,061	4,331	4,607	4,902	30.3
Skagit	12,332	15,034	18,876	19,429	20,262	21,218	22,075	22,974	19.05
Skamania	882	1,086	1,596	1,657	1,534	1,843	1,943	2,049	17.93
Snohomish	43,831	55,404	73,544	76,493	80,687	86,035	90,271	94,748	12.51
Spokane	47,674	51,949	60,969	62,141	65,577	67,802	70,639	73,620	15.08
Stevens	3,830	5,160	7,516	7,730	7,609	8,515	8,924	9,357	21.25
Thurston	18,707	23,629	32,764	33,772	35,533	37,812	39,682	41,660	15.58
Wahkiakum	644	706	1,015	1,047	1,084	1,162	1,196	1,231	30.93
Walla Walla	7,568	8,174	8,778	8,938	9,212	9,496	9,790	10,097	16.65
Whatcom	15,967	19,400	26,640	27,454	28,937	30,235	31,869	33,604	16.02
Whitman	3,647	3,765	4,257	4,277	4,456	4,518	4,638	4,763	10.08
Yakima	24,355	24,921	28,122	28,612	29,581	30,463	31,473	32,527	13.01

Notes: • Totals may not add due to rounding.

SUPPLEMENTAL POPULATION INFORMATION

ADDITIONAL INFORMATION about the development of annual population estimates can be found in this chapter. The information includes state statutes related to OFM's official April 1 population determinations, the Small Area Estimate Program, how to access OFM population data products, State Data Center and Business and Industry Data Center contacts, and acknowledgment of the various organizations that provide OFM with data.

Washington State Statutes Related to the Population Estimates Program

Population estimates for the state, counties, cities and towns and their use are governed by a number of statutes:

RCW 43.41.110: Assigns OFM duties related to population and annexation.

RCW 43.62.040: Agencies, cities, towns and counties will furnish OFM whatever aid is needed in performance of its population studies. OFM's population determinations are final and conclusive.

RCW 43.62.030: Requires annual estimates as of April 1 of each year for cities and towns. Used for allocation of specific funds the following Jan. 1. Only persons meeting resident criteria are to be included in the population estimates.

RCW 43.62.035: Requires annual estimates as of April 1 of each year for all counties. Used for allocation of specific funds in July of the same year.

Population Estimates Development

Population estimates represent the resident population as defined by the U.S. Census Bureau. This includes persons in housing units, military personnel and their dependents, persons living in correctional institutions and persons living in residential care facilities. College students are considered residents of the place where they live while attending school. Seasonal populations, such as vacationers or migrant farmworkers, are counted at their usual place of residence. Persons with no usual place of residence are counted where they are located on April 1.

The estimates are developed as accurately as possible from standard and tested methods. The specific procedures used to develop estimates depend on the availability of state and local area data.

State estimates are developed by a component method. The *component method* uses three basic demographic indicators — births, deaths and migration — to produce population estimates. The population change is the result of subtracting deaths and then adding births and migration to the base year population. Vital statistics data are obtained from the Department of Health. The migration estimate is based on administrative data sets such as school enrollment and tax filers' data which reflect the mobility of the population.

County populations are developed by three methods: the component method, ratio correlation and the housing unit method. *Ratio correlation* relates change in the county's share of the state population over a specific 10-year period to changes in the county's share of a set of symptomatic data over the same time period. The current equation contains school enrollment, voter registrations, auto

registrations, housing, births and deaths to persons age 65 or over. Changes in the symptomatic data are then tracked annually through the current decade to estimate population. The *housing unit method* estimates population on the basis of housing change and assumptions about occupancy rates and average household size.

City/town populations include both estimates and actual counts. A small number of cities census their entire population each year. The housing unit method is used by OFM to prepare population estimates for the remaining cities. City population estimates are determined based on changes in the housing stock and counts of persons residing in group quarters facilities. The household population is estimated based on knowledge of housing unit change since the last census, occupancy rates and average household size. The population residing in group quarters facilities and from recent annexations are subsequently added to the estimate of household population to derive the final estimate. The reliability of the housing unit estimation method depends on accurately determining changes to the housing stock, the occupancy rate and average household size.

Small Area Estimates Program

OFM's annual city and county population determinations satisfy a variety of needs related to planning and program administration. However, population and housing estimates are frequently required for areas that do not coincide with city or county boundaries. The Small Area Estimate Program (SAEP) was developed to produce population and housing estimates for such areas while maintaining as much consistency as possible with OFM's city and county estimates.

The SAEP produces a consistent set of small area population and housing data for statewide applications. SAEP estimates are generated for census areas, 'special' areas that are statutorily required and other areas of statewide significance. Small areas are defined as geographic areas below the level of the state that may or may not be coincident with the boundaries of U.S. Census Bureau geographic entities.

SAEP estimates are not the official state population estimates used for revenue distribution and program administration for cities and counties. Although city and county population totals from the state's official population estimates program serve as control numbers, the SAEP targets different geographic areas and therefore has different data and methodological requirements.

The SAEP takes OFM's official April 1 city/town and county population and housing estimates and distributes these to census blocks based on a variety of information, including residential building permits, assessor records, postal delivery statistics and decennial census information.

The SAEP uses area-weighted and parcel point-weighted areal interpolation techniques to develop estimates for small areas that do not follow census geographies. This strategy is intended to take advantage of more geographically precise information where it is available.

SAEP data products are summarized by geography and available in tabular and GIS shapefile format. Each SAEP data product contains information on the following demographic measures: total population, household population, group quarters population, total housing units and occupied housing units. Estimates for the following geographic areas are provided.

Census geographic areas:

- census block groups
- census tracts
- census designated places
- congressional districts
- Public Use Microdata Areas
- school districts
- state legislative districts
- tribal areas
- urban areas
- urban growth areas
- ZIP Code Tabulation Areas

Other geographic areas:

- fire protection districts
- public hospital districts
- selected islands
- urban growth areas (unincorporated parts)
- Water Resource Inventory Areas

Population Data Products

OFM produces a number of population data products. To find frequently requested population items, please see <http://www.ofm.wa.gov/pop/key2pop.asp> or click on one of the links below. You can subscribe to the OFM-Forecasting LISTSERV to receive email notifications about updated OFM data products [at http://listserv.wa.gov/cgi-bin/wa?SUBED1=ofm-forecasting&A=1](http://listserv.wa.gov/cgi-bin/wa?SUBED1=ofm-forecasting&A=1).

Population estimates:

- official April 1 population estimates
- age, sex and race
- small areas
- special areas

Forecasts and projections:

- state population forecast
- Growth Management Act county projections

Other population products:

- American Community Survey
- annexations
- decennial census
- population density
- GIS data

Washington State Data Center and Business and Industry Data Center

The Washington State Data Center (SDC) and Business and Industry Data Center (BIDC) are federal-state cooperative programs sponsored by the U.S. Census Bureau. OFM is the agency responsible for administering these programs in Washington.

A list of the Washington SDC/BIDC coordinating agencies and affiliate members is provided below. These organizations and contact persons play an important role in the dissemination of census information. Many of the larger participating universities, regional councils of governments and county planning agencies publish census information targeting the needs of local constituents. Many of these same organizations can also assist with data requests.

Lead Agency:

Office of Financial Management
Forecasting and Research Division
P.O. Box 43124
Olympia, WA 98504
Phone: 360-902-0599
Email: ofm.forecasting@ofm.wa.gov

David Schumacher, director
Phone: 360-902-0530

Erica Gardner, coordinator
State Data Center
Phone: 360-902-0535
Email: erica.gardner@ofm.wa.gov

Coordinating Agencies:

Central Washington University
Center for Regional Economic Analysis
2400 S. 240th St.
Des Moines, WA 98198-1007

Gary Smith, director
PNW Regional Economic Analysis
Project
2102 36th Place SE
Puyallup, WA 98374
Phone: 253-219-6604
Email: smithg@pnreap.org

Tina Tian, data archivist
110 Savery Hall
P.O. Box 353345
Seattle, WA 98195
Phone: 206-543-8110
Email: xtian@u.washington.edu

Employment Security Department
Labor Market and Economic Analysis
P.O. Box 9046
Olympia, WA 98507

Scott Bailey, regional economist
5411 East Mill Plain Blvd., Suite 15
Vancouver, WA 98661-7046
Phone: 360-735-4995
Email: scott.bailey@esd.wa.gov

Washington State University
Holland and Terrell Libraries
Box 645610
Pullman, WA 99164-5610

Puget Sound Regional Council
1011 Western Ave., Suite 500
Seattle, Washington 98104

Neil Kilgren, senior planner
Phone: 206-971-3602
Email: nkilgren@psrc.org

Lorena O'English, social sciences
reference and instruction librarian
509-335-2695
Email: oenglish@wsu.edu

University of Washington
Cass Hartnett, U.S. documents librarian
Suzzallo Library
P.O. Box 352900
Seattle, WA 98195
Phone: 206-685-3130
Email: cass@uw.edu

Western Washington University
Department of Sociology-CSSI
516 High St., MS-9081
Bellingham, WA 98225

Librarian/Information Center
Phone: 206-464-7532
Email: info@psrc.org

Center for Social Science
Computation and Research
110 Savery Hall
P.O. Box 353345
Seattle, WA 98195
Phone: 206-543-8110
Email: csscr@u.washington.edu

Lucky Tedrow, director
Demographic Research Laboratory
Phone: 360-650-3176
Email: lucky.tedrow@wwu.edu

Washington State Library
P.O. Box 42460
Olympia, WA 98504

Crystal Lentz, government documents
specialist
Phone: 360-704-5275
Email: crystal.lentz@sos.wa.gov

Affiliates:

Benton-Franklin Council of Governments
P.O. Box 217
Richland, WA 99352

Sally Mohr, community and economic development manager
Phone: 509-943-6756
Email: smohr@bfcog.us

Brian Malley, modeling/GIS specialist
Phone: 509-943-9185
Email: bmalley@bfcog.us

City of Bellevue
450 110th Ave. NE
Bellevue, WA 98004

Emil King, strategic planning manager
Phone: 425-452-7223
Email: eaking@bellevuewa.gov

Gwen Rousseau, associate planner
Phone: 425-452-2743
Email: grousseau@bellevue.wa.gov

Chelan County
Department of Community Development
Long Range Planning Division
316 Washington St., Suite 301
Wenatchee, WA 98801

David Grimes, assistant director/long-range planning division manager
Phone: 509-667-6464
Email: david.grimes@co.chelan.wa.us

Cowlitz-Wahkiakum Council of Governments
Administrative Annex
207 Fourth Ave. N
Kelso, WA 98626

Melissa Taylor, planning manager
Phone: 360-577-3041
Email: mtaylor@cwco.org

Grant County Economic Dev. Council
6594 Patton Blvd. NE
Moses Lake, WA 98837

Jonathan Smith, executive director
Phone: 509-764-6579
Email: jonathan@grantedc.com

Grays Harbor Council of Governments
115 S. Wooding St.
Aberdeen, WA 98520

Theresa Julius, planner/GIS coordinator
Phone: 360-537-4386
Email: tjulius@ghcog.org

King County Government
Office of Performance & Budget
401 Fifth Ave., Suite 810
Seattle, WA 98104

Chandler Felt, demographer
Phone: 206-263-9693
Email: chandler.felt@kingcounty.gov

King County Library System
1111 110th Ave. NE
Bellevue, WA 98004

Barbara Massey, reference librarian
Bellevue Regional Library
1111 110th Ave. NE
Bellevue, WA 98004
Phone: 425-452-2106
Email: bmasey@kcls.org

Documents Librarian
Kent Regional Library
212 Second Ave. N.
Kent, WA 98032
Phone: 253-859-3330
Email: awickens@kcls.org

Bothell Regional Library
Documents Librarian
18215 98th Ave. NE
Bothell, WA 98011
Phone: 206-486-7811
Email: annistix@kcls.org

Seattle City Government
Dept. of Planning and Development
700 Fifth Ave., Suite 2000
P.O. Box 34019
Seattle, WA 98124

Jennifer Pettyjohn, senior planner
Phone: 206-386-9041
Email: jennifer.pettyjohn@seattle.gov

Diana Canzoneri, demographer
Phone: 206-615-1269
Email: diana.canzoneri@seattle.gov

Seattle Public Library
1000 Fourth Ave.
Seattle, WA 98104

Judy Solomon, depository librarian
Reference Services
Phone: 206-386-4636
Email: judy.solomon@spl.org

Ann Ferguson, curator
Special Collections
Phone: 206-733-9083
Email: ann.ferguson@spl.org

Southwest Washington
Clark County Assessment and GIS
P.O. Box 5000
Vancouver, WA 98666

Ken Pearrow, GIS coordinator
Phone: 360-397-2002
Email: ken.pearrow@clark.wa.gov

Spokane Regional Trans. Council
221 W. First Ave., Suite 310
Spokane, WA 99201

Kevin Shipman, GIS analyst
Phone: 509-343-6385
Email: kshipman@srctc.org

Thurston Regional Planning Council
2424 Heritage Court SW, Suite A
Olympia, WA 98502

Scott Carte, GIS coordinator
Phone: 360-956-7575
Email: cartes@trpc.org

Tri County Economic Development
District
986 S. Main, Suite A
Colville, WA 99114

Rene Kubiak, finance manager
Phone: 509-684-4571
Email: rkubiak@teddonline.com

Washington State Department of
Health
The Center for Health Statistics
101 Israel Road SE
P.O. Box 47814
Olympia, WA 98504-7814

Phyllis Reed, epidemiologist
Phone: 360-236-4324
Email: phyllis.reed@doh.wa.gov

Whatcom Council of Governments
314 E. Champion St.
Bellingham, WA 98225

Ron Cubellis, finance manager
Phone: 360-676-6974
Email: ron@wcog.org

Andy Gomez, senior
transportation planner
Phone: 360-676-6974
Email: andy@wcog.org

Yakima Valley Conference of
Governments
311 N. Fourth St., Suite 202
Yakima, WA 98901

John Rohrbaugh, GIS analyst
Phone: 509-574-1550
Email: john.rohrbaugh@yvcog.org

Bureau of the Census
Regional Census Center
U.S. Bureau of the Census
15350 Sherman Way, Suite 400
Van Nuys, CA 91406

Linda Clark, data dissemination
specialist
Phone: 206-446-8794
Email: linda.clark@census.gov

Acknowledgments

OFM thanks the following entities for providing data and/or assistance in support of the population estimates program:

- Center for Health Statistics, Department of Health for supplying vital statistics data.
- Office of Research and Data Analysis, Department of Social and Health Services for providing institutional population counts.
- Department of Veterans Affairs for providing veteran institutional counts.
- Department of Licensing for providing driver's license and vehicle registration data.
- Office of Superintendent of Public Instruction for providing student enrollment counts.
- Employment Security Department for providing state employment data.
- Agency personnel in other states who provide reciprocal data on interstate movements.
- Puget Sound Regional Council for providing building permit information.
- City, county and regional planners/staff for providing data used in the development of April 1 population estimates.
- Housing directors at colleges and universities for submitting April 1 dormitory counts.
- Armed forces personnel at major military installations for contributing data on current resident military population counts.
- Municipal Research and Services Center for providing technical assistance/resources related to annexation and revenue distribution.

Washington State Office of Financial Management
Insurance Building • PO Box 43113
Olympia, WA 98504-3113 • 360-902-0555 • Fax 360-664-2832